



Request for Proposals:

#2020-014 Architectural & Engineering Services for
Chestnut Street Multimodal Station & Shared
Services Facility



Butler County Regional Transit Authority
3045 Moser Court,
Hamilton, Ohio 45011

with

City of Oxford
15 S College Ave.
Oxford, Ohio 45056



October 19, 2020



600 Superior Ave. East • Suite 1100 • Cleveland, OH 44114 • 216.875.4000

Craig R. Brown ASLA
Vice President

Direct 216-875-4037

1. Cover Sheet	
2. Contents Page	
3. Qualifications and Capabilities of Firm	Page 3
Qualifications & Organizational Capabilities of HWH Team	
a Resumes of Key HWH Personal	
b Sub-Consultants Information (Profile and Resumes)	
c Profile of Team and Contact Information	
d Organizational Chart	
4. Related Experience and References	Page 54
Project Sheets of HWH	
a Related Experience of Team Members	
b Sub-consultants Project and Client Information (Federally funded projects included)	
5. Technical Proposal	Page 78
a. Response to each Task in Scope of Work	
b Disclaimer's	
c Schedule	
6. Disadvantaged Business Program	Page 95
7. Attachments	Page 104
8. Pricing Proposal	Page 127



Section 3

Qualifications and Capabilities

- a HWH Qualifications Summary**
- b HWH Resumes**
- c Sub Consultant's Information**
- d Profile of Team and Contact Information**
- e Organizational Chart**

Project Team Qualifications

Current Scope

The combined goals of both Butler County Regional Transit Authority and the City of Oxford for this project include the design, engineering, and project management for two separately owned and funded facilities. The train station, owned by the City and the bus facility, owned by BCRTA will be developed to create the Chestnut Street Multimodal Station and Shared Facility & The City of Oxford Passenger Rail Platform. The scope of this work will include providing a rail platform along the existing Amtrack Tracks and the design of the Administrative / Public building.

Specific items highlighted in the RFQ to include:

- Administrative Offices for 9 employees (Various agencies)*
- Employee Break Rooms, Locker Rooms & Rest rooms*
- Indoor and Outdoor Passenger Waiting Space*
- Public Restrooms*
- Customer Service & Ticketing for BCRTA and Future Amtrack*
- Separated Bus Lanes and Covered Terminal for BCRTA and Interurban Buses*
- Indoor Vehicle Maintenance Space*
- Indoor Parking for 20 Buses and Heavy Equipment*
- Relocated and Covered Fuel Island and Covered Tanks*
- Bus / Truck Wash*
- Real Time Bus Signage Indoors and at Bus Staging Areas*
- Welcoming and Cohesive Connections to adjacent Rail Platform*

HWH Qualifications

HWH is a Cleveland based Architectural Engineering Firm located in downtown Cleveland. We have been in business since 1908 and serve many governmental, commercial, and industrial clients. We have completed projects in 32 states and 38 different countries internationally. Our firm has experience on projects in the Cincinnati area including the General Electric Aviation Transportation Facility, the award-winning PNC (formerly National City Bank) Cincinnati Operations Center and multiple projects at Arlington Memorial Gardens including 2 buildings at the recently constructed Tribute Campus.

Our Firm and Team have extensive experience in transit projects, both rail and bus facilities. Some of these include:

- Lee van Aken Rail and Bus Station**
- Warrensville Shaker Multimodal Station**
- Tower City Multimodal Station University**
- Cedar Station**
- Coventry Station**
- East 79th Street Multimodal Station**
- Windermere Station**
- Brookpark Maintenance Garage**
- Central Bus Maintenance Facility**
- Central Rail Maintenance Facility**
- GCRTA Main Headquarters Building**



HWH has a multi discipline staff which can handle any of the project goals as described in the RFQ within house. On the majority of our projects all coordination and discussions between architects, designers and engineers will occur face to face in our offices or conferences rooms. Our communication is simpler and more effective than having to spend time on phone calls with various other consulting firms added to the project Team to round out Butler County Regional Transit Authority's project goals.

Site: Our Landscape Architects and Civil Engineers design and engineer roads, parking lots, truck and bus routing, pedestrian walkways, and irrigation systems. We use auto turn to confirm turning radius for various vehicles. Also, we perform master planning for commercial, industrial, and Metropolitan park districts. We develop water harvesting, drainage systems, utility systems and large earthwork projects See the section on Arlington Memorial Gardens for a project with many of these features.

Architecture: Our Architects and Interior Designers provide for renovations and new offices, workstations, conference areas, meeting rooms, furniture and fixture layouts, facade repair, window repair, restrooms, and kitchens. See the Project Sheet on GE Transportation Center.

Engineering: We have large Mechanical, Electrical and Structural Engineering departments. They engineer heating, HVAC systems, ventilation, sanitary systems.

HWH Team Organization:

HWH will serve in the role of Architect Engineer of Record and Owner's Representative on this project. HWH will provide complete project management for the field investigations, design, engineering, bidding, and permit review process. HWH will have a designated Project Manager to oversee your project. During construction, HWH will administer contracts, review construction schedules, oversee project meetings, review contractor pay requests and perform punch list and project close outs.

HWH has several sub-consultants for this project. See consultant's Section of this Submission

Smith Architects, a DBE firm from Cleveland is ODOT certified DBE firm. MS Bonnie Smith, the principal of Smith Architects has worked with HWH often. Currently Smith Architects is working with HWH on our GCRTA On Call project. They have worked with us on other GCRTA projects, University of Akron, City of Cleveland projects and proposals for Cuyahoga Community College and Cleveland State University. Smith Architects will provide approximately 5% to 7% of the project fee.

Resource International Inc is a female owned enterprise located in Columbus Ohio. RII will provide geotechnical, survey, environmental and some civil consulting. RII has been on all of our On-Call projects for GCRTA as well as City of Cleveland, Cleveland Metroparks and Cuyahoga Community College projects. They have performed cost estimating for the 10-mile Euclid Corridor project from Downtown Cleveland to University Circle and worked on the Detroit Line Westside Cleveland bus line.

K & J Safety and Security is a Female Owned Business out of Florida. They are a certified Veterans Enterprise and work almost exclusively on Federally funded projects. have become a very prominent service in our society today. Many transit projects now require safety evaluation or certification. This is especially true for rail layout, around rail platforms or bus station loading areas



K & J Safety and Security has performed safety certification on both the Greater Cleveland RTA's Euclid Corridor project and the recent analysis of bus and pedestrian traffic through Cleveland's redesigned Public Square. K & J is currently working with HWH on several GCRTA Tower City track projects and a Safety Audit at the Brookpark Maintenance Shop.

K&J has more than 20 Federally funded projects.

Cleveland Public Square

The Catalyst Consulting Group will assist our Team with public meetings and stakeholder's engagement. The Catalyst Consulting Group is a female owned business and has provided charette style conferences all over the world and overseas.

Current Scope

The combined goals of both Butler County Regional Transit Authority and the City of Oxford for this project include the design, engineering, and project management for two separately owned and funded facilities. The train station, owned by the City and the bus facility, owned by BCRTA will be developed to create the Chestnut Street Multimodal Station and Shared Facility & The City of Oxford Passenger Rail Platform. The scope of this work will include providing a rail platform along the existing Amtrack Tracks and the design of the Administrative / Public building.

Specific items highlighted in the RFQ to include:

Administrative Offices for 9 employees (Various agencies)

Employee Break Rooms, Locker Rooms & Rest rooms

Indoor and Outdoor Passenger Waiting Space

Public Restrooms

Customer Service & Ticketing for BCRTA and Future Amtrack

Separated Bus Lanes and Covered Terminal for BCRTA and Interurban Buses

Indoor Vehicle Maintenance Space

Indoor Parking for 20 Buses and Heavy Equipment

Relocated and Covered Fuel Island and Covered Tanks

Bus / Truck Wash

Real Time Bus Signage Indoors and at Bus Staging Areas

Welcoming and Cohesive Connections to adjacent Rail Platform

HWH Company Background

HWH is a Cleveland based Architectural Engineering Firm located in downtown Cleveland. We have been in business since 1908 and serve many governmental, commercial, and industrial clients. We have completed projects in 32 states and 38 different countries internationally. Our firm has experience on projects in the Cincinnati area including the General Electric Aviation Transportation Facility, the award-winning PNC (formerly National City Bank) Cincinnati Operations Center and multiple projects at Arlington Memorial Gardens including 2 buildings at the recently constructed Tribute Campus.

Our Firm and Team have extensive experience in transit projects, both rail and bus facilities. Some of these include:

Lee van Aken Rail and Bus Station
Warrensville Shaker Multimodal Station
Tower City Multimodal Station University
Cedar Station
Coventry Station
East 79th Street Multimodal Station
Windermere Station
Brookpark Maintenance Garage
Central Bus Maintenance Facility
Central Rail Maintenance Facility
GCRTA Main Headquarters Building



HWH has a multi discipline staff which can handle any of the project goals as described in the RFQ within house. On the majority of our projects all coordination and discussions between architects, designers and engineers will occur face to face in our offices or conferences rooms. Our communication is simpler and more effective than having to spend time on phone calls with various other consulting firms added to the project Team to round out Butler County Regional Transit Authority's project goals.

Project Experience

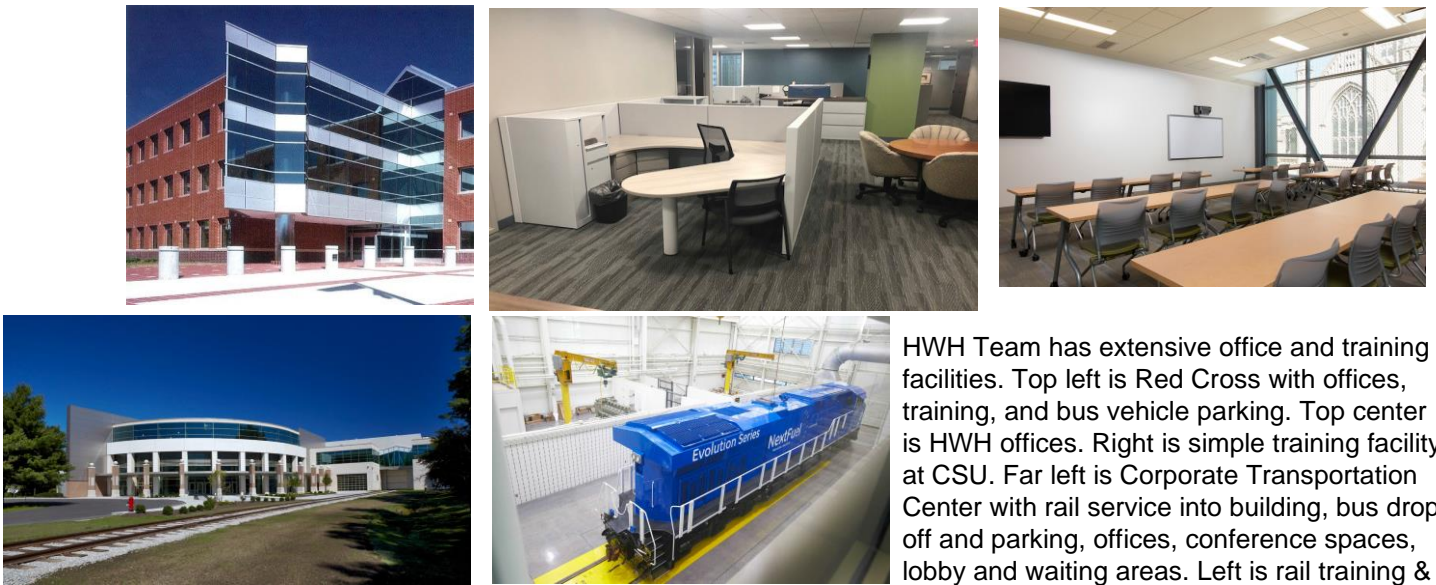
The following images, write ups and Project Sheets relate directly to the experience requested in the RFQ:

Transit Facilities



HWH has extensive experience with Transit stations and facilities. We have been under contract with the Greater Cleveland Regional Transit Authority since 2012 to perform On Call services. Our experience includes stations, multimodal facilities garages, and other tasks. Above left is rail station with bus connections. Center is Multimodal rail, bus, pedestrian and even water connection. Right photo is Multimodal Tower City with light rail, bus, Amtrac and pedestrian connections.

Office and Training Facilities



HWH Team has extensive office and training facilities. Top left is Red Cross with offices, training, and bus vehicle parking. Top center is HWH offices. Right is simple training facility at CSU. Far left is Corporate Transportation Center with rail service into building, bus drop off and parking, offices, conference spaces, lobby and waiting areas. Left is rail training & maintenance.

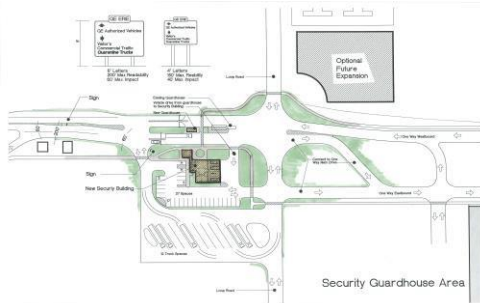
Maintenance & Service Facilities



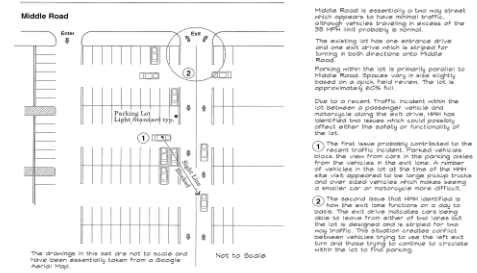
HWH has developed over 100 vehicle maintenance and repair facilities throughout the country. The majority are automotive retail centers, but bus and truck service centers have also been done for industrial and school systems. Our architects have developed basic maintenance with cord reels with air guns, fluids, and lights. We have experience with maintenance equipment such as alignment stations, tire changers, break lathes and tech boxes. Our shops have inground hoists, above ground lifts and hand jacks, as requested in this RFP.

Bus Staging and Circulation Design

HWH has extensive experience in designing bus parking and staging. Here are 3 projects with various issues regarding bus movement.

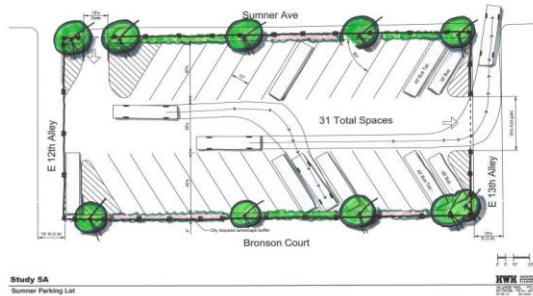


The Welcome Center at GE Erie required design for bus and truck traffic.



CRISTAL 1) Existing Conditions
Plant 1, Ashtabula Parking Study

The Crystal Parking lot in Ashtabula had sight problems, commonly associated with bus traffic and larger vehicles. HWH studied the lot and redesigned the parking layout to minimize vehicle conflicts.



Study 5A
Summer Parking Lot

The Summer Court parking lot in downtown Cleveland was being designed to have 35' and 40' bus parking for Charter Tours to Playhouse Square. This is one example using the Auto Turn program to verify bus movement in a tight area.

Bus and Storage Garages

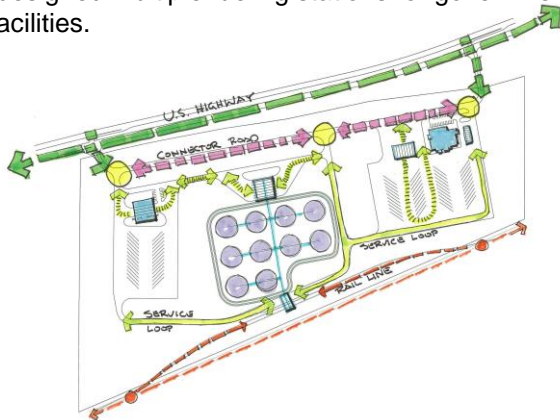
The 2 garages below were some of the many projects where HWH has assisted on various issues relating to the renovation or maintenance of transit / public garages. The photo on left is a City of Cleveland Garage and the right is one of many garages we have worked on for GCRTA.



The 2 sketches to left are Conceptual studies prepared for the Laketrans system. There were 5 different building layouts for 10 bus storage showing the least expensive (also least efficient), designs that used all interior bus circulation to those that allowed each bus to have multiple drive through doors.

Fueling Facilities

HWH has designed multiple fueling stations for governmental and industrial facilities.



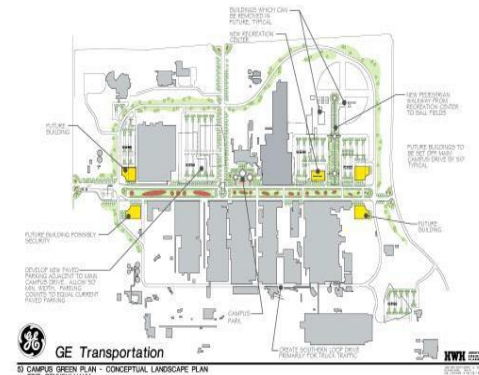
The project above left is the initial concept for a multimodal facility in Indiana. It included from left a large vehicle maintenance building with parking. The center shows a fuel station for private commercial vehicles, a tank farm and fuel station for tanker rail cars. The third area to right is vehicular fueling and rest area building. The photo above right is a typical covered transit fueling station - not HWH design.

Site / Exterior Features:

A prime component of this project is the walkway connecting the City of Oxford rail platform and station to the BCRTA multimodal bus facility. HWH has extensive experience with integrating pedestrian circulation routes with signage and art elements. We create walkways, crosswalks, outdoor waiting nodes, landscaping, and site lighting.



The Hanna Annex Lot



GE Erie Streetscape

The Hanna Annex is a bus waiting area , connecting to a parking lot in downtown Cleveland. It features bike racks and storage, electric car charging and art figures highlighting the Cleveland Playhouse Square Theater District.

The GE Streetscape connects east and west edges of the campus. The project is scheduled for 2022



Bus Station in California by FMG Architects-Regular HWH Team Member. New streetscape and bus lanes. FMG may be available for consulting later in the project.



Waiting Area in North Carolina with plaza, seating, and art form bike racks outside of a commercial service lobby.

D. Specialty Services

HWH has several specialty services that can benefit most projects and clients. We expect to use this for BCRTA

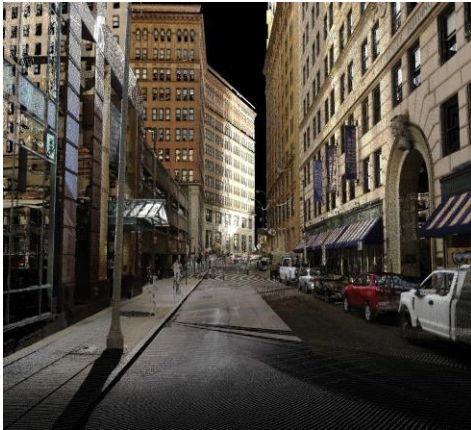
Laser Scanning and On-Site Imaging

HWH has recently added 3D Laser Scanning capabilities to the services we can offer to our clients. Our Focus 70, Faro Scanner is portable, fast and provides ultra-accurate measurements. This service is able to replace many above ground survey tasks and provides a project log of near photographic quality of everything within scanning range to 1/4". Extensive architectural field measurements are not needed.

We are able to record and provide:

- Architectural Facades
- Complex Interior Structures
- Mechanical and Electrical Rooms
- Building Features
- Site Features Topography
- Auto Cad conversion of Laser images

Our scanner provides a realistic and true to detail scan result allowing our clients to accurately record in a fraction of the time previously required. The digital scan can be a data collection tool as well as a very accurate base for future planning, BIM (Building Information Measurement) Design, construction documents and 3D renderings. In a very short period we can document buildings, small parks, parking lots and many other applications.



The images here are laser scans, not photographs. Above is East 6th Street Cleveland where HWH is providing an enhanced streetscape for pedestrian circulation. Above right is a scan of the Laketran Park and Ride Lot prior to redesign. The image to the right is a downtown Cleveland Corporate Lobby of Fifth Third Building.

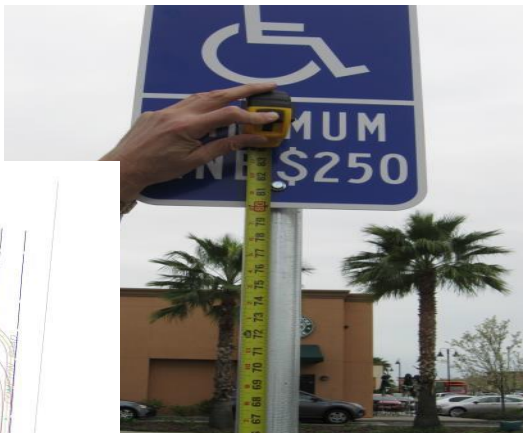
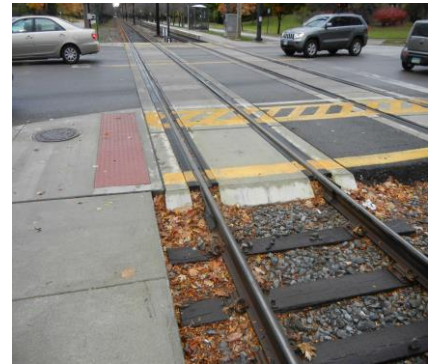


This service is very unique and most Architectural firms cannot provide this service.

This will be a huge benefit to BCRTA and the City of Oxford for the Chestnut Street Multimodal Station.

ADA Surveys and Compliance:

HWH staff have been trained to perform American with Disabilities Act Surveys and develop Compliance Reports. HWH has traveled the United States and surveyed projects in 25 to 30 states and as many as 100 locations.

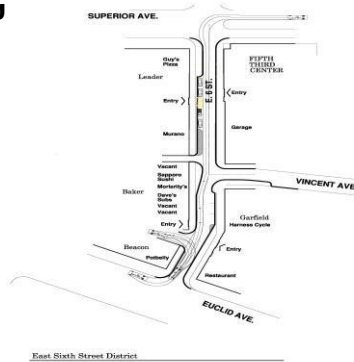


Photo's to the left show HWH measuring parking spaces, curb ramps and Handicap signage. HWH has also designed rail crossings, re-engineered non-compliant bus loading and crosswalks as well as surveys of transit stations. On interiors we utilize digital Slope Meters, stop watches, tape measures, smart tools, and force gauges for or prime survey tools.



Auto Turn Vehicle Routing

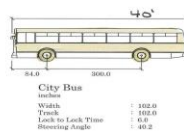
HWH uses the Auto Turn program to validate our vehicle routes and turn radius design. This program can use any type vehicle, such as bus, fire truck, box truck, passenger vehicles or various size semi-trailers.



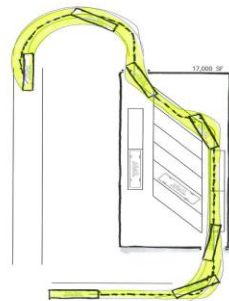
East Sixth Street District
Revised Scheme Jan 1, 2019
Box Truck Route



53' Semi Truck Route



Bus Route through parking garage using the Auto Turn program



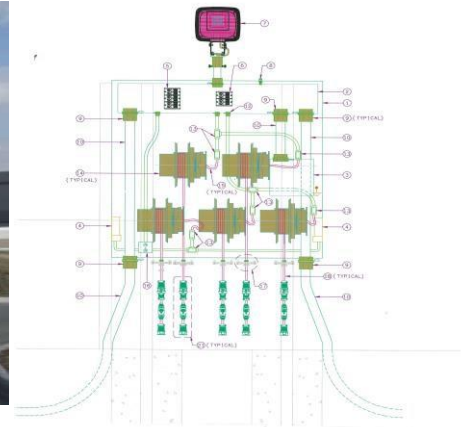
Green Building Designs



The Laketran Headquarters project is NOT scheduled to be submitted for LEEDS Certification however the Laketran management team is interested in utilizing Green Building Solutions. All of the HWH architectural solutions follow Best Practice for Green Design where possible or appropriate. This includes utilizing natural light, screening direct afternoon sunlight, water harvesting and natural ventilation. We often will provide a client with the LEED Strategies we have used and credits we could have applied for.

Electrical Charging Stations:

HWH is aware that a Fast Charge System is not proposed for the BCRTA Multimodal Building , however it was stated in the pre-proposal meeting as a possibility. Also, some overnight charging should be considered for the bus garage. HWH has the staff to handle any electrical change in scope as part of our in-house team.



The drawings above right are from HWH's work for RTA on the Hayden Bus Garage where we did mechanical, block heating and bus Charging. We did a similar outdoor lot project for the bus storage site for Cleveland Heights University Heights School System.

BIM & 3-D Engineering:



HWH is not planning to use REVIT, our Building Information Management program for this project yet if the need arises, we have the capabilities in-house to provide that service.

Cincinnati Area Projects



HWH designed and engineered the **PNC Operations Center** (formerly National City Bank). This was a redundant facility to one in Cleveland so that the Midwest district would never lose function. As well as complicated engineering HWH developed the site plan, created outdoor staff areas, semi-truck delivery and parking, offices, and security areas. This was a \$50 million dollar project in 2010.



HWH has been working regularly with **The Arlington Memorial Gardens** in Springfield Township for more than decade. The most recent project at the Tribute Campus included two 4000 SF buildings, interior lobby, waiting areas, vineyard walk, ADA access through parking lots, small bus service, ponds and 100% water harvesting. The front entrance to the right is a current project which features 2 water features, walkways and new circulation utilizing auto turn to verify the road layout. This is slated for construction in spring 2021.



HWH has also done extensive engineering at the **General Electric Aviation Transportation** facility in Cincinnati Ohio. We have had staff at that site on a weekly basis during our projects.

HWH Resumes



Keith A. Rintamaa, P.E.

Executive Vice President

Available for Interview at this time

Project Assignment

Principal-in-Charge

Joined Firm

February 1993

Mr. Rintamaa is one of HWH's senior executives. He was promoted to Executive Vice President in March 2012 and has excelled in that role. He has developed a project forecasting and tracking system for the firm which has allowed HWH to be very successful at completing projects on-time and on-budget. He has revamped our process of senior management project review to continue to provide the client with the best product possible. Keith is also the driving force behind the HWH Inspire Team; a group of HWH staff who are volunteering their time to assist in worthy community non-profit projects. Mr. Rintamaa is a resident of Lake county.

Mr. Rintamaa has served as an engineering Project Manager on numerous industrial and commercial projects since 2000. He has managed design teams for industrial building projects for The General Electric Company, The Goodyear Tire & Rubber Company, General Motors Corporation, and Invacare. Mr. Rintamaa has also been involved in light industrial and commercial building projects for The General Electric Company, Heinen's and Invacare Corporation. Mr. Rintamaa is currently responsible for our Project Management group and oversees the project activities of fourteen Project Managers. Prior to 2000, Keith served as a structural engineer, performing design activities including foundation design, structural steel design, and reinforced concrete design. He gained invaluable field experience as a Resident Engineer undertaking Owner representation responsibilities for construction observation. This field experience extends to building expansions and new construction for The General Electric Company, The Goodyear Tire & Rubber Co., Heinen's, and Invacare Corporation. Mr. Rintamaa has also performed and coordinated numerous construction cost estimates and feasibility studies for both commercial and industrial building projects all over the world.

Education

Purdue University

Bachelor of Science of Civil Engineering – 1992

Registrations

Ohio, North Carolina, South Carolina

Professional Affiliations

*BVU: The Center for Nonprofit Excellence
Concrete Reinforcing Steel Institute
Greater Cleveland Partnership*

*Lake County Development Council, Inc.
Mentor International Trade Initiative
HWH Inspire Team*

Selected Professional Experience

General Electric Company

*Erie Transportations Learning Center
Erie Campus Cultural Schematic
Greenville Power Generation Turbine
Development Building
Schenectady (various projects)*

Heinen's

Aurora and Twinsburg Stores

Invacare

Elyria Headquarters



Craig R. Brown, ASLA

Vice President

Available for Interview at this Time

Project Assignment Project Manager/Contact
Landscape Architect
Joined Firm
September 1978

Mr. Brown leads our Site and Civil Engineering Department. He designs, manages, and often details the firms most prominent and significant site development projects.

Craig has a portfolio that features extensive experience in most site applications including Commercial, Institutional, Recreation, Government and Private Client Ventures. He has a reputation within the Cleveland Design Community as a high quality, functional designer who understands the importance of accurate and well thought out detailing.

Craig's professional work has taken him to more than twenty states nationally and Canada. He is the author of nationally published articles on Healing Gardens, Waterfronts and Streetscape Design. He has also given speeches on Cemetery Design, Waterfront Design and North Coast Harbor Planning.

Education

The College of Wooster
The Ohio State University

Bachelor of Science of Landscape Architecture - 1975

Recognition of Outstanding Seniors – Harry Kaplan Award - 1975

Registrations

Ohio, North Carolina

Professional Affiliations

American Society of Landscape Architects – 1979 – Present

Ohio Chapter ASLA

Chairman Chapter Conference – Circa 1982

Outstanding Service to the Chapter – Circa 1983

Chapter Awards Chairman – Circa 1984

Western Reserve Section OCASLA

Section Past President – Circa 1980

Selected Professional Experience

Lake Metroparks

Painesville Township Park Masterplan

Concord Woods

Lake Metroparks Headquarters Building

Lake Farm Park

The K and D Group

Stonebridge Development

Reserve Square Streetscape

Residences at 668 Streetscape

The Timken Company

Research Center Masterplan

Headquarters Streetscape

Lake View Cemetery

Wade Lake Masterplan

Cleveland Metroparks

BP Amphitheater

Zoo Gate Commons Masterplan

Connector Multi-Purpose Trails

Selected Awards

Fairport Harbor Waterfront – Ohio Chapter 1990

African Plains Exhibit – Ohio Chapter 1986

Settlers Landing – Waterfront Center 1996



Megan L. Zupan, P.E.

Licensed Engineer

Available for Interview at this Time

Project Assignment

Project Manager /
Structural Engineer

Ms. Zupan started her engineering career at HWH soon after graduating from college in the Washington, D.C. area. She initially served as support engineer and then project engineer for a variety of project types. She quickly became efficient at most structural engineering requirements including detailing, load calculations, bearing calculations, foundation design, structural steel design, and various types of reinforcements.

Joined Firm

September 2007

Ms. Zupan now travels extensively on HWH projects nationally and internationally serving as project structural engineer. Her professional progress has made her an integral part of the HWH project team to the point where she currently has filled the role as project manager, overseeing several disciplines depending on the project.

One of Megan's most positive attributes is her ability to mix and communicate with an engineering audience as well as a group with less technical backgrounds. She is often seen assisting other HWH staff on structural issues for their projects.

Education

The Catholic University of America

Bachelor of Civil Engineering –2006

Bachelor of Science in Architecture –2006

Registrations

Ohio

Professional Affiliations

American Society of Civil Engineering

American Concrete Institute

American Institute of Steel Construction

Cleveland Engineering Society

HWH Inspire Team

Selected Professional Experience

The Goodyear Tire & Rubber Co.

Gadsden, AL

Fayetteville, NC

Americana, Brazil

Santiago, Chile

Uitenhage, South Africa

General Electric Company

Greenville Power Generation Turbine

Development Building

Lubrizol Corporation

Goodyear Auto Service Center

Alexandria, VA

Arlington Memorial Gardens

Cincinnati, Ohio

Project manager for 6 to 8 acre site development with initial construction of 2 4000 sf structures, roads, parking and walkways.



Timothy D. Olland

Licensed Architect

Available for Interview at this Time

Project Assignment

Project Architect

Mr. Olland has over 40 years of architectural experience including 17 years as a principal and architectural firm owner. His background includes design / build, project programming, design development, on-site construction administration to owner move-in and occupancy. Mr. Olland has developed and maintained a unique blend of project delivery methodology, enhancing the owner/contractor construction experience.

Joined Firm

October 2006

Education

The Ohio State University

Bachelor of Science in Architecture - 1976

Registrations

Ohio

NCARB Accreditation

Professional Affiliations

International Building Code Council

Selected Professional Experience

Recent project design and construction service projects include:

Cleveland Metroparks Headquarters Building-Cleveland, Ohio

Project Architect for the conceptual design of a new headquarters for the regional metropolitan park district. Cleveland Metroparks wanted to keep the facility at the existing site, adjacent to the Cleveland Zoo. The park board ultimately decided to renovate their existing building and Mr. Olland was also the conceptual designer for the renovation.

PNC Data Center Campus for 12th Largest U.S. Bank – Cincinnati, Ohio

Project architect consulting services including programming, design development and construction services. Facility included office space for 60 staff members and data center space with necessary mechanical, electrical and site related work. Project was constructed in design – build with max format and completed by a prominent construction manager. The Data Center remained operational during the construction phases.

General Electric Learning Center & Marketing Office – Erie, Pennsylvania

Renovated structure on a plant campus for an international transportation company. Work included programming, design, and field/construction services through completion of testing lab and training offices and meeting assembly spaces.

Building Tenant & Base Building Renovation – Erie, Pennsylvania

A two-story office project for 80 staff members. Work included the architectural programming, design, total skin replacement with new building core, tenant space, building code coordination and construction coordination in an early 1900s building structure renovation.

Office & Testing Lab Facility – South Carolina

Building addition office work included the programming, design and construction services coordination for engineering testing lab and office staff at an industrial plant campus. The project included an addition to an existing high bay testing lab with an attached two-story office building with an atrium for 60-80 office engineering staff in the Power Generating Industry. This project was completed by a general contractor and existing labs and offices remained open and operational throughout the construction period.



WILLIAM R. BRADT, AIA

Licensed Architect

Project Assignment
Department Manager

Mr. Bradt is an Architect with varied experience in small residential, commercial, and large industrial projects. Responsibilities have included design, cost estimating, code review, product specification and construction document preparation, as well as field surveying and preparing construction punch lists. He also has computer experience using Windows 10 and AutoCAD 2017.

Joined Firm

May 1988 to September
1991

Rejoined Firm October
1993

Project experience includes all phases of design for numerous manufacturing facility expansions for the Goodyear Tire and Rubber Company in Oklahoma, Virginia, and North Carolina. He has also worked on design for expansions of Goodyear's international facilities in the countries of Chile, Brazil, Thailand, India, and China. Other past experience includes manufacturing facility layout and budget estimating for GE Lighting in Ohio, renovation/remodel plans for automotive service stores for Goodyear Retail nationally, office remodeling work for Goodyear Corporate Headquarters in Akron, Ohio; a third floor addition to the Goodyear Technical Center Office Building in the country of Luxembourg, a laboratory and office retrofit for GELcore in Cleveland, Ohio, planning studies and cost analysis for relocation of offices and test labs for GE Power Systems in Schenectady, New York, and a factory and office addition for GE Healthcare's Target Facility in Cleveland, Ohio.

Mr. Bradt also provides consulting services involving drawing review and construction inspection for Goodyear's Retail Tire and Auto Service stores throughout the country. He has also worked on the development of a new Retail Store Building Design Package for Goodyear, which has been the basis for most new store construction. He also has had training in surveying for ADA compliance related to those retail stores in both new and existing construction.

Education Kent State University

Bachelor of Architecture - 1988

Registrations Licensed Architect, State of Ohio

Selected Professional Affiliations American Institute of Architects
1999 – Current



James W. Brewer, P.E.

Vice President

Available for Interview if Keith Rintamaa is not able to Attend

Project Assignment

Department Manager /
Senior Structural
Engineer

Mr. Brewer currently serves as department manager of structural engineer and project manager for several larger industrial projects, including coordination of all disciplines for the project. He has served as a project structural engineer for a variety of industrial and commercial projects. Responsibilities include layout and design of structural steel and reinforced concrete structures, cost estimating, scope writing, project coordination and project management. Responsibilities also include design and specification of fall protection and safety related items. Projects included manufacturing facilities for The Goodyear Tire & Rubber Co., General Motors Corporation and The General Electric Co. as well as several other commercial and industrial clients.

Joined Firm

July 1986

In addition to his engineering responsibilities, Mr. Brewer also helps to maintain computer operations, primarily in implementing and instructing the update of CADD software. He also acts as network management backup and troubleshooter

Education

Case Western Reserve University
Bachelor of Science of Civil Engineering – 1986

OSHA 10-Hours Occupational Safety and Health
Training Course in Construction Safety & Health

Registrations

Ohio

Professional Affiliations

*American Concrete Institute
American Institute of Steel Construction*

*Concrete Reinforcing Steel Institute
HWH Inspire Team*

Selected Professional Experience

General Motors

*Parma Metal Center - Floor Fill-in Project
Die Cell Verification Projects at several locations*

General Electric Company

*Bucyrus Lighting Expansion
Erie transportation Center
Greenville Power Generation
Turbine Development Building*

The Goodyear Tire and Rubber Co.

Numerous Building additions and upgrades in the U.S. and International facilities

GCRTA

*Lee Van Aken Station
East 79th Street Station
East 120th Station
Headquarters Building Renovation*



Marwan Karim, P.E.

Licensed Engineer

Project Assignment

Department Manager /
Senior Electrical
Engineer

Mr. Karim’s electrical design experience includes the design of low and medium voltage systems in industrial and commercial facilities. Portions of his experience includes short circuit and coordination studies, Arc Flash Hazard Assessments, lighting design, HVAC (electrical), security, paging, fire alarm, communication systems and power distribution for a variety of new and existing industrial and commercial facilities.

Joined Firm

June 1995

Additional experience includes project site survey to determine facility condition before initiating design, cost estimating and project management. Also experience with investigative studies in determining causes of problem occurring in electrical power equipment.

Recent project experience including electrical facility design, Arc Flash Hazard Assessment, short circuit and coordination study and load study for turbine test cell facility.

Electrical renovation/new design has been incorporated on projects for General Electric, The Goodyear Tire & Rubber Company, General Motors Corporation, The Lubrizol Corporation, Morgan Advanced Materials.

Education

Cleveland State University
Bachelor of Science of Electrical Engineering – 1992

Registrations

Professional Engineer – State of Ohio – 2002

Professional Affiliations

*Institute of Electrical and Electronics
Engineers*

Selected Professional Experience

The Goodyear Tire and Rubber Co.

*Lawton, OK.
Fayetteville, NC
Gadsden, AL
Uitenhage, South Africa
Pulandian, China*



Timothy J. Reed, P.E.

Licensed Engineer

Project Assignment

Project Electrical
Engineer

Joined Firm

January 2015

Mr. Reed will be the Project Manager for projects that are primarily electrical engineering specific. Tim Reed’s design experience includes various new construction projects and existing facility renovations, with project types ranging from commercial and retail to industrial facilities, government facilities, and higher education facilities.

Mr. Reed’s engineering experience includes electrical load studies, voltage drop calculations, short circuit calculations, selective coordination, arc flash hazard analysis, photometric calculations, energy code compliance and green building analysis, fire alarm systems, lightning protection systems, telephone/data systems, public address systems, PLC interface and wiring diagrams, standby emergency generators, existing electrical system survey and analysis, master planning, grounding, and power system protection. Mr. Reed’s responsibilities include engineering calculations, design, specifications, and construction administration for normal and emergency power, lighting, lighting control, and specialty systems. He is responsible for coordination with other disciplines, vendors, and owner’s representatives throughout the duration of the project.

Recent project experience includes lighting, design, exterior lighting, lighting control, power, telephone/data, and fire alarm design for General Electric in Erie, PA; Electrical Substation and Drum Filling Building design for Lubrizol in Painesville, OH; and power and control interconnection diagrams for various testing environments for General Electric in Greenville, SC.

Education

The Ohio State University

Master of Science in Electrical Engineering - 2013

Cleveland State University

Bachelor of Electrical Engineering - 2005

Registrations

Professional Engineer – State of Ohio – 2011

Selected Professional Experience

The Lubrizol Corporation

Substation & Drum Fill Building

The Goodyear Tire & Rubber Co

Various projects at GY in Lawton, OK

Various projects at GY in Fayetteville, NC

General Electric Company

Various projects at GE in Erie, PA

Various project at GE in Greenville, SC

Arlington Memorial Garden

New Celebration of Life Center & Tribute Center



RICHARD A SIMON, PE

Vice President

Project Assignment
Department Manager /
Senior Mechanical
Engineer

Joined Firm
June 1997

Mr. Simon’s experience encompasses the development of project design criteria, creation of planning documents and budgets, delegation of design tasks, review of mechanical designs, coordination of engineering disciplines, and design of process piping, plumbing, and fire protection systems. Specific tasks included sizing, specification, and selection of system components, pipe stress analysis, generation of piping and instrumentation diagrams (P & ID's), planning layouts, construction drawings, scopes of work, budgetary construction cost estimates, and collecting field data from various industrial sites.

Mr. Simon has experience as a project manager, lead engineer, and resident engineer for numerous industrial facilities including but not limited to The GE Steam Turbine Development Lab in Schenectady, NY, The GE Gas Turbine Technology Lab in Greenville, SC, GE Aviation in Evendale, OH, and GE Transportation in Erie, PA. He has experience in the design of mechanical systems for the power industry including combustion air, saturated/superheated steam, condensate, boiler feedwater, vacuum, lube oil, hydraulic oil, cooling water, high temperature water, liquid fuel, and natural gas. Duties in addition to those listed above include preparation for design review/presentations, planning and budget reviews, evaluation of process system performance, development of specifications for refurbishment of equipment, coordination of construction activities, observation of construction activities to confirm compliance with design intent, and development and implementation of system commissioning, startup, and operating plans.

He worked as a co-op for HWH during the summer of 1995, winter and summer of 1996 and was hired as a full-time employee in 1997.

Education University of Toledo
Bachelor of Science Mechanical Engineering – 1997

Registrations Ohio

Professional Affiliations - *American Society of Mechanical Engineers*

Selected Professional Experience

General Electric
*Schenectady, NY
Greenville, SC
Erie, PA
Evendale, OH*

Goodyear
*Topeka, KS
Akron, OH
Fayetteville, NC*



Jason M Gray, P.E.

Mechanical Engineer

Project Assignment Mechanical Engineer

Mr. Gray has over a decade of experience in designing HVAC, plumbing fire protection and piping systems for healthcare, education, commercial, private, and industrial markets. These projects have included both new construction and renovations for office buildings, retail, K-12 schools' buildings, industrial facilities, community centers, warehouses, and manufacturing.

Joined Firm May 2007- 2015 December 2019

His project duties included field investigations, load estimating and performing calculations for building heating and cooling systems. He has specified equipment, plumbing fixtures, engineering plumbing and piping plans, construction cost estimating, reviewing shop drawing submissions, contractor interfacing and recommending preferred mechanical vendors.

Education

Ohio University
Bachelor of Science Mechanical Engineering

Registrations

Ohio Professional Engineer (P.E.76227)

Professional Affiliations

American Society of Heating Refrigeration and Air-Conditioning Engineers (ASHRAE)

Selected Professional Experience

Commercial / Industrial Projects

Goodyear Tire and Rubber (Various Facilities)
Office Buildings
Manufacturing & Production Areas
General Electric (Various US Facilities)
Office Buildings
Manufacturing & Testing Areas
Lubrizol Corporation (Avon Lake, Ohio & Painesville, Ohio)
Control Rooms
Laboratories
Nestle USA (Solon Ohio)
Office Buildings Renovation

Healthcare Projects

The Ohio State University Wexner Regional Medical Center (New Albany, Ohio)
Medical Office Building
Ambulatory Surgery Center Outpatient Facility
Pharmacy Compounding Areas

Private Clients

The Arlington Memorial Gardens Cemetery



Robert Szule, P.E. Licensed Engineer

Project Assignment

Project Mechanical Engineer

Joined Firm

April 2017

Key Qualifications

Mr. Szule has over 16 years of engineering experience in project management and design of heating, ventilation, and air conditioning (HVAC), plumbing, and fire protection systems in commercial, municipal, institutional, and healthcare facilities.

He has directed design teams by estimating man-hours, delegating tasks and tracking progress of multiple projects.

Responsible for all aspects of construction document preparation. He has performed site surveys, assessments and created as-built documents. Performed cost estimates and calculations for selective coordination, equipment selection, calculating building load calculations, selecting and layout of HVAC systems, preparation of contract drawings and specifications, review of shop drawings, field inspections and technical interface with owners, architects and other engineering disciplines.

He also has written and edited specifications, including proprietary specifications (i.e. master spec, spec link and other proprietary commercial software specifications).

Education

Cleveland State University

Bachelor of Science of Mechanical Engineering – 1999

Registrations

Registered in the State of Ohio

Professional Affiliations

American Society of Heating, Refrigeration & Air Condition Engineers

Selected Professional Experience

Comcast National Headquarters

Philadelphia, Pennsylvania

68 story High-Rise Building– Plumbing and Fire Protection Fit-out project for 56 floors.

Cleveland Municipal School District

Cleveland, Ohio

Multiple 64,000 sq ft, K-8 Schools, Plumbing and Fire Protection

Arlington Memorial Gardens

Cincinnati, Ohio

Plumbing & HVAC for Multiple 5000 sq ft,

Jones Day Law

Cleveland, Ohio

Multi-floor renovations for HVAC and Plumbing systems.

Historic League Park Renovation

Cleveland, Ohio

Historic ticket building renovation, new buildings for a museum and concessions stand. -HVAC, Plumbing and Fire-Protection

Hallrich DELCO Pizza Hut

Macedonia, Ohio

HVAC and Plumbing for 3000 SF Retail Conversion



Bradley Cochrane

Professional Civil Engineer

Available for Interview at this Time

Project Assignment

Project Civil Engineer

Since graduating from Purdue University, Mr. Cochrane has gained invaluable experience working for the government and in close cooperation with the EPA. He understands Site Grading, Road and Parking Area Design, Stormwater Management, Erosion and Sediment Control Planning, and EPA permitting from the public-sector side of the design process.

Joined Firm

March 2016

Since joining HWH, Bradley has utilized his expertise and well-rounded knowledge of the complete field of civil engineering to effectively provide the highest value of design for the client.

Bradley has assisted in several site development and improvement projects for clients such as The Lubrizol Corporation, The Goodyear Tire and Rubber Company and General Electric.

He has aided in the design of an access road and accompanying culverts for a new facility constructed at Lubrizol in Painesville, Ohio.

Additionally, Bradley has worked with the Project Civil Engineer in the site design, grading, and stormwater management for the expansion of an existing Goodyear facility in Oklahoma.

Mr. Cochrane is familiar with the NPDES permitting process, as well as Best Management Practices required for approval and preferred by governing authorities. Purdue University

Education

Bachelor of Science Civil Engineering - 2014

Registrations

Ohio, 2019 Engineer

Professional Affiliations

*American Society of Civil Engineers (ASCE)
Structural Engineering Institute (SEI)*

Selected Professional Experience

The Lubrizol Corporation

*Painesville, OH - 1,625 LF of new access road
Accompanying culverts and stormwater drainage*

Lorain Public Library

*Columbia Station, OH - Assisted in the
storm drainage re-design of an existing site*

General Electric Company

*Erie, PA - Erosion & sediment control planning,
storm drainage design, and NPDES permit
completion*

UMH Properties-

*Mantua, Ohio - Civil Plans for Housing,
Included Layout, Grading & Erosion Control*

The Goodyear Tire and Rubber Company

*Lawton, OK - 2 acres of site grading and
erosion & sediment control planning, and
construction audit*

Continental ContiTech

*Norfolk, NE - Storm drainage design,
stormwater pollution prevention planning,
and site grading related to building expansion*

Arlington Memorial Gardens

*Cincinnati, OH - Aided in site design, grading,
water harvesting, storm drainage and erosion
& sediment control planning for the
construction of two new buildings*



Rebecca Amendola

Graduate Landscape Architect

Project Assignment Ms. Amendola has recently started at HWH. We were attracted to her by the diverse creative interest's she has exhibited in her life. She has participated in dance, music, and the visual arts. Her professional skills are graphic oriented with Landscape Design plan view rendering, 3d rendering , sketching expertise as well as plant selection.

Joined Firm She has training in sustainable design and can provide layout, grading and other 2020 required building plans.

Rebecca has computer skills including AutoCAD, Rhinoceros, SketchUp, Lumion, Illustrator, Photoshop, InDesign, VRAY, ArcGIS and Revit.

Education The Pennsylvania State University
Bachelor of Landscape Architecture 2019

Professional Affiliations *Landscape Architecture Student Society
American Society of Landscape Architecture Student Section
Gamma Sigma Tau Chapter
Western Reserve Section ASLA*

Personal Affiliations *HWH Inspire Team*

Selected Professional Experience **The City of Cleveland**
Planning Commission Intern

LM Wander and Sons Landscaping
Design Intern



Michele P. Lawson, ASID LEED AP BD+C

NCIDQ Certified Interior Designer

Project Assignment

Lead Interior Designer

Ms. Lawson is experienced in managing in all phases of interior design projects including programming, conceptual interior design, space planning, architectural detailing, furniture, and equipment specifications, bid management, materials studies, and specifications.

Joined Firm

November 1994

Ms. Lawson is responsible for project programming and the project management for ongoing interior renovation projects for the General Electric Company in various locations throughout the United States. Past projects include programming, space planning, interior finish and furniture specifications for several National City Bank Operations Facilities, GE Lighting Institute, MetroHealth Administrative offices, Deaconess Hospital of Cleveland – lobby and public areas, Catholic Diocese of Cleveland, Cuyahoga Community College, U.S. West Corporate Offices.

Ms. Lawson has guided numerous clients through the furniture selection and bidding process, handling furniture specifications, managing procurement, observing installations, and developing move management packages in the millions of dollars.

Education

University of Cincinnati

Bachelor of Science in Design – 1980

University of Colorado School of Architecture

Registrations

NCIDQ Certified – 1988

LEED AP – 2009

Professional Affiliations

American Society of Interior Designers, (ASID)

Board of Directors - 2003-2004

LEED Accredited Professional (LEED AP) - 2009

Coalition for Interior Design Licensing in Ohio (CIDLO)

Board of Directors - 2007-2009

Selected

Awards

American Society of Interior Designers

Holy Rosary Church – Interior Restoration – 1st Place, 2016

GE Lighting Institute Nela Park – Large Commercial – 1st Place, 2007

Cleveland Heights High School Auditorium – Large Commercial – 1st Place, 1996

Sub-Consultants

Company Profiles and Resumes

Smith Architects LLC

create | inspire | connect

SMITH ARCHITECTS LLC

Bonnie E. Smith, President, AIA, NCARB

Smith Architects LLC

16105 Lorain Avenue, Unit 1

Cleveland, Ohio 44111

(216) 664-1111 Phone

bonnies@smitharchitectsllc.com

- Founded in 2005
- City of Cleveland CSB/FBE/LPE
- Cuyahoga Co. SBE/WBE
- NEORSW WBE
- CMHA FBE
- EDGE Certified



In business since 2005, Smith Architects LLC is full service architectural design firm serving commercial, educational and government clients from our Cleveland, Ohio office. We provide architectural and interior design, master planning, programming, site analysis, cost analysis, construction administration, historic preservation and adaptive reuse. "We design buildings for people": We have implemented collaborative designs with clients on all of our projects. We have extensive experience in preparing construction specifications and in construction administration.

Smith Architects LLC core values include:

- Active communication with our clients and team of consultants throughout the design project to ensure successful outcomes
- Diligent management of scope, schedule, budget and quality on all of our projects.
- Commitment to hiring the most capable staff and consultants possible.
- Dedication to LEED/Green Building principles through sustainable design

Smith Architects LLC has provided architectural design services for Cleveland State University, Kent State University, and repeat projects for The University of Akron. We have also designed repeated projects for the Ohio National Guard Station at Ravenna, Ohio. We have worked in tandem with larger firms to design multiple projects for the City of Cleveland and CMHA.

**BONNIE E. SMITH, AIA,
NCARB**

President

Available for Interview at this Time

Ms. Smith has over 30 years of experience in the design of a wide variety of structures, including schools, residential and commercial architecture and civic buildings. The types of projects include the construction of new buildings as well as extensive experience with the rehabilitation and modernization of existing facilities. She has been involved in all phases of project development from design development through construction administration: Client and public meetings, design development, presentation, code search, working drawings, specifications, schedule development and management process, bidding and construction administration. Ms. Smith is certified as a LEED Accredited Professional + BD&C. Ms. Smith has made educational projects the focus of her career and has experience in both Ohio and California.

Ms. Smith's experience also includes over 8 years of experience in the government sector as a Project Manager and Architect for the Los Angeles Unified School District, acting on the owners behalf as an owners representative for complex construction projects on urban sites. Projects included the new \$12M Queen Anne Elementary School, and the new \$22M Martin Luther King/Charles R. Drew Medical Magnet High School.

Recent Projects

- Professional Offices, C&S Engineering, Cleveland, Ohio
- LEAP Office Study, Cleveland, Ohio
- Hatfield's Goode Grub & Barbeque Restaurant, Cleveland, Ohio
- 3 Stooges Sports Club, Cleveland, Ohio
- Bright Eyes Daycare Center, Shaker Heights, Ohio
- Daycare Center for Berea Children's Home and Helwig Whistle Stop Commercial and Office Development, Berea, Ohio
- Ohio National Guard Battery Room Renovation & Expansion, Camp Ravenna
- Ohio National Guard Locker Room, Training Room & Warehouse Expansion, Camp Ravenna
- Akron Metro RTA SCAT Bus Building, CNG Refueling Station, Akron, Ohio
- Cleveland Carr Center Vehicle Repair Facility, Cleveland, Ohio
- Cleveland Gateway Garage Improvements & Repairs, Cleveland, Ohio
- Cleveland State University Area Health Education Center Build-Out, Cleveland, Ohio
- Exchange Street Residence Hall Starbucks, University of Akron
- School of Speech, Pathology & Audiology Office Reconfiguration, University of Akron
- Quaker Square – Office Renovation, University of Akron
- Reroofing –Child Development Center and Research One Buildings, Kent State University
- Wolf Residence Addition, Cleveland, Ohio
- Gumbish Residence Addition, Cleveland, Ohio
- Fenn Ohio City Craftsman Houses, Cleveland, Ohio
- CMHA Building Conditions Survey, Carver Park Estates, Cleveland, Ohio
- CMHA Building Conditions Survey, Riverside Estates, Cleveland, Ohio



Education

Bachelor of Architecture,
Kent State University
Bachelor of Science,
Kent State University

Professional Registration

Registered Architect:
Ohio, California

Professional Organizations & Certifications

American Institute of Architects
NCARB

Community Service

Past Vice-Chair, Westlake
Planning Commission
Past-President,
Westlake Kiwanis
Past-President,
Westlake Historical Society
Co-chair, Westlake/Crocker
Park Open Space Planning
Committee, 2007



Summary of Qualifications (SOQ)



**3257 Elcano Lane
Cantonment, FL 32533-6876
850-968-0901
www.kjsafety.com**

Our Mission Statement

K & J Safety and Security Consulting Services, Inc. provides highly customized transportation related safety, security and emergency management services in the United States and selected international markets. The K & J team of transit professionals provides the necessary expertise, knowledge, and valued transit-related experience to insure a safe and secure operational environment for all types of transit agencies.

Firm Overview

K & J Safety and Security Consulting Services, Inc. is a Female Owned, Veteran, Disadvantaged Business Enterprise (DBE), Transportation Safety, Security and Emergency Management consulting business located in Cantonment, Florida. K & J Safety and Security Consulting Services, Inc. (K & J Consulting Services) has been in business since 2002 and has shown steady growth in fees, industry recognition and employee size since its start-up.

To support this statement, K & J provides the following:

Qualified – K & J has performed over 58 Safety and Security Certification (SSC) projects for some of the most complex transportation engineering projects undertaken in North America. K & J's staff are instructors for the United States Department of Transportation (USDOT), Transportation Safety Institute (TSI) and as such have developed for the USDOT the current standards for emergency preparedness, system safety and system security training currently being provided to transportation systems throughout North America. The K & J staff is also DHS and FEMA trained in numerous areas like National Incident Management (NIMS) via IS-100, 200, 300, 400, 500, 600, 700 and 800 as well as Continuity of Operations – COOP (IS-546) and TARR, TO-SPOT and many others.



Seasoned – K & J's staff possess over 278 combined years of experience with the development, generation, presentation and evaluation of transit agency safety, security and emergency management programs. Since 2002, K & J has performed over 76 emergency preparedness exercises specifically tailored for transit/transportation agencies throughout North America (to include Canada, Puerto Rico, Hawaii) as well as several international locations (Singapore, South Korea, Malaysia and Thailand). K & J's staff of 20 full time individuals are some of the most qualified practitioners in their field. They include fire fighters, law enforcement and transit operations staff as well as system safety practitioners who have worked together for over 15 years.

Proven – K & J has a track record of over 15 years supporting transit agency needs for the development and evaluation of system safety, security and emergency management programs. K & J's experience in this area pre-dates the events of 911 as well as the existence of the Department of Homeland Security (DHS). K & J is the selected contractor supporting the USDOT, FTA and TSI with their Emergency Management Training Program as well as DHS with the training of their Surface Transportation Security Inspector (STSI) program. K & J has prepared and delivered over 45 After Action Reports (AAR's) compliant to the Homeland Security Exercise Evaluation Program (HSEEP) standard. None of these AAR's were rejected or required resubmitting based on final review by DHS. Along with this activity, K & J has evaluated safety and security programs for numerous transit agencies through an intensive internal auditing program customized by K & J, performed some of the first TVA's and safety certifications ever on transit agencies and developed the first System Safety Program Plan - SSPP (WMATA) and Agency Safety Plan – ASP (Arlington Transit) ever accepted and approved by the FTA.

Qualifications and Capabilities

K & J Safety and Security Consulting Services, Inc. is a Florida registered company with office locations in Denver, CO; Washington, D.C.; New York City, NY; Los Angeles, CA; Philadelphia, PA; Charlotte, NC and Orlando, FL. Additionally, K & J is a registered Disadvantaged Business Enterprise in several States throughout the United States.



K & J possess the following capabilities and qualifications:

- Industrial Safety Support
- OSHA Compliance Assessments
- Fire Life Safety (FLS)
- Bus, Rail and Para-Transit Safety
- System Safety
- Threat and Vulnerability Assessments (TVA)
- Safety and Security Design Reviews
- Crime Prevention Through Environmental Design (CPTED) Reviews and Application
- Weapons of Mass Destruction (WMD) Training
- Explosives and Bomb Threat Awareness
- Terrorism and Counterterrorism Training
- Safety and Security Certification (SSC) Methodology
- Rail and Bus Accident Investigation
- Bus and Rail Hijacking Simulations
- System Security
- Emergency Management Training
- National Incident Management System (NIMS)
- Incident Command System (ICS)
- Emergency Incident Table Top and Full-Scale Field Exercises
- System Security
- Internal Safety, Security (ISSAs) and Emergency Management Audits
- Value Engineering (VE) Reviews
- Development of Agency Rules and Procedures
- Development of Safety (SSPP/ASP), Security (SSP) and Emergency Management (SSEPP) Plans
- Development of Transit Agency Safety and Security Design Criteria (DC)
- Transit Asset Management System (TAMS) Support
- State of Good Repair (SGR) Assessments
- Safety Engineering
- 49 CFR Part 270, 659, 625, 630, 670, 674 Support



Current and Past Projects (Snapshot)

- Washington Metropolitan Transit Authority (WMATA) On-Call Safety Engineering Support Contract
- Southeastern Pennsylvania Transit Authority (SEPTA) On-Call Safety Engineering Support Contract
- Honolulu Authority for Rapid Transportation (HART) Safety and Security Certification Contract
- Charlotte Area Transit system (CATS) Safety and Security Certification Contract in support of the South Corridor Light Rail Project (SCLRP) and the Blue Line Extension (BLE).
- Provided System Safety, Security and Emergency Management Services in Support of the Restart of the Atlanta Streetcar (ASC), DC Streetcar (DCSC) and Memphis Streetcar (MATA).
- Professional Engineering Services in Support of the Virginia Rail Express (VRE).
- Safety and Security Certification Services in Support of the Greater Cleveland Regional Transit Authority (GCRTA) Stations Certification Project.
- On-Call Professional Safety Engineering Services in Support of Pinellas Suncoast Transit Authority (PSTA).
- On-Call Professional Safety Engineering Services in Support of Massachusetts Bay Transportation Authority (MBTA).
- On-Call Professional Safety Engineering Services in Support of National Passenger Railroad (Amtrak).



Robert Boone

Safety & Security Consultant
rboone@kjsafety.com
(407) 808-5327

Robert Boone is a transit consultant who has worked with HWH since 2013. He has extensive experience in transit value engineering, CPTED safety evaluation, OSHA compliance, property alignment, emergency management, safety certification, security assessment and various other transit system related evaluations.

Mr. Boone as teamed up with HWH on many actual projects and proposals including GCRTA - Tower City Multi-Modal Transit Center. K&J has performed various track safety certifications and BDS movement analysis for Cleveland's Public Square and Euclid Corridor.



Resource International, Inc. (Rii)

Founded in 1973, Chief Executive Officer and Chairperson of the Board, Farah Majidzadeh, built a company from the corporate headquarters that began in her basement into a multi-disciplined, professional engineering consulting firm specializing in construction management, information technology, and planning and design of buildings and infrastructure projects valued in excess of \$1 billion annually. Today, the Columbus-based corporate headquarters and its branch offices throughout the Midwest employ more than 160 engineers and professionals and list an impressive roster of projects for local and state government, transportation agencies, K-12 and higher education, healthcare, sports and entertainment.

Full Services include:

- Civil Engineering
- Environmental Services
- Construction Administration, Engineering and Inspection Services
- Construction Management
- Geotechnical and Material Engineering Services
- Ground Penetrating Radar
- Information Technology
- Asset Management and Pavement Engineering
- Survey, Mapping & SUL

Local Presence

Our full-service Cleveland office and laboratory was established in 1984. Our Team is comprised of local staff who live and reside in Northeast Ohio. Rii has been providing civil and geotechnical engineering services, environmental assessments, survey and mapping, construction observation, inspection, and materials testing services on a variety of projects.

The work for this project will be performed out of our Cleveland office.

Corporate Office:

6350 Presidential Gateway
Columbus, OH 43231
p 614-823-4949
f 614-823-4990

Cleveland Office:

9885 Rockside Road, Suite 145
Cleveland, OH 44125
p 216-573-0955
f 216-573-0963



Resource International, Inc. (Rii)

Founded in 1973, Chief Executive Officer and Chairperson of the Board, Farah Majidzadeh, built a company from the corporate headquarters that began in her basement into a multi-disciplined, professional engineering consulting firm specializing in construction management, information technology, and planning and design of buildings and infrastructure projects valued in excess of \$1 billion annually. Today, the Columbus-based corporate headquarters and its branch offices throughout the Midwest employ more than 160 engineers and professionals and list an impressive roster of projects for local and state government, transportation agencies, K-12 and higher education, healthcare, sports and entertainment.

Full Services include:

- Civil Engineering
- Environmental Services
- Construction Administration, Engineering and Inspection Services
- Construction Management
- Geotechnical and Material Engineering Services
- Ground Penetrating Radar
- Information Technology
- Asset Management and Pavement Engineering
- Survey, Mapping & SUL

Local Presence

Our full-service Cleveland office and laboratory was established in 1984. Our Team is comprised of local staff who live and reside in Northeast Ohio. Rii has been providing civil and geotechnical engineering services, environmental assessments, survey and mapping, construction observation, inspection, and materials testing services on a variety of projects.

The work for this project will be performed out of our Cleveland office.

Corporate Office:

6350 Presidential Gateway
Columbus, OH 43231
p 614-823-4949
f 614-823-4990

Cleveland Office:

9885 Rockside Road, Suite 145
Cleveland, OH 44125
p 216-573-0955
f 216-573-0963



Environmental Services

Rii's Environmental Services Division includes Certified Professional Geologists, Certified Asbestos Inspectors and Abatement Designers, Certified UST Inspectors, as well as Professional Engineers who provide environmental services on both large and small projects to parks and recreation departments, engineering companies, architects, transportation agencies, government agencies, airport authorities, etc. Project involvement includes on-site investigations, environmental drilling, collaboration with state and federal agencies, and final report preparation.

For demolition of facility renovations, our Ohio Department of Health certified staff can assist in determining the presence and quantity of hazardous materials, including asbestos, lead-based paint, mercury or PCBs in lighting systems. In addition, we can develop the specifications for bidding and provide abatement oversight. For new site development, we are well versed in performing environmental site assessments (ESAs), as well as providing wetland delineations, EPA and USACE permitting, and UST investigations and services.

Rii is fully equipped for the proper handling, storage, and transportation of sampled soil and groundwater. This includes Thermo 580B Photo Ionization Detectors (PID), decontamination equipment, storage containers, proper personal protective equipment (PPE), water level indicators, and water well sampling equipment. For asbestos, lead-based paint and indoor air quality concerns, Rii's environmental staff are properly trained, medically cleared and fit tested for half and full face respirators. Rii has numerous air sampling pumps, calibrators, sample cartridges, tubing and PPE to perform abatement monitoring and clearance sampling.

Site Assessment and Hazardous Materials Services

- Phase I/II Environmental Site Assessment (ESA) (ASTM E 1527)
- ODOT ESA Screening, Phase I and II ESA
- ODOT Categorical Exclusion (CE) Document
- Environmental Compliance Audit
- Lead-based Paint Survey
- Mercury Containing Materials Survey
- Paint Corrosion Condition Assessment
- Ground Penetrating Radar (GPR)
- Spill Prevention, Control & Countermeasure (SPCC) Plan



Asbestos Services

- Asbestos Surveys
- Asbestos Abatement Design
- Asbestos Abatement Oversight and Owners Representation
- Abatement Air Monitoring and Clearance Testing
- Employee Awareness Training

Ecological Services

- Wetland and Stream Delineation
- Habitat Assessment (includes completing QHEI, HHEI, ORAM, VIBI, HMFEL)
- Jurisdictional Determination (JD) Completion
- Section 401/404 Permitting
- Wetland Mitigation Design
- Stream and Wetland Water Quality Sampling



Underground Storage Tank (UST)

- UST Installation and Removal Inspection
- BUSTR Tier Evaluations
- Petroleum Contaminated Soil (PCS) During Construction
- Mitigation Design and Management

Stormwater Management

- Stormwater Pollution Prevention Plan (SWPPP) During Construction
- Construction SWPPP Inspection and Industrial SWPPP Development

Health and Safety

- Mercury Vapor Exposure Assessment (Gymnasium Flooring)
- Health and Safety Plan Development and Inspection
- Employee Exposure Monitoring—Lead, Asbestos, Particulates, Petroleum Volatiles

Remediation

- Soil and Groundwater Contamination Delineation
- Mitigation Planning and Design
- Hazardous Material Emergency Spill Response



Environmental Services

Rii's Environmental Services Division includes Certified Professional Geologists, Certified Asbestos Inspectors and Abatement Designers, Certified UST Inspectors, as well as Professional Engineers who provide environmental services on both large and small projects to parks and recreation departments, engineering companies, architects, transportation agencies, government agencies, airport authorities, etc. Project involvement includes on-site investigations, environmental drilling, collaboration with state and federal agencies, and final report preparation.

For demolition of facility renovations, our Ohio Department of Health certified staff can assist in determining the presence and quantity of hazardous materials, including asbestos, lead-based paint, mercury or PCBs in lighting systems. In addition, we can develop the specifications for bidding and provide abatement oversight. For new site development, we are well versed in performing environmental site assessments (ESAs), as well as providing wetland delineations, EPA and USACE permitting, and UST investigations and services.

Rii is fully equipped for the proper handling, storage, and transportation of sampled soil and groundwater. This includes Thermo 580B Photo Ionization Detectors (PID), decontamination equipment, storage containers, proper personal protective equipment (PPE), water level indicators, and water well sampling equipment. For asbestos, lead-based paint and indoor air quality concerns, Rii's environmental staff are properly trained, medically cleared and fit tested for half and full face respirators. Rii has numerous air sampling pumps, calibrators, sample cartridges, tubing and PPE to perform abatement monitoring and clearance sampling.

Site Assessment and Hazardous Materials Services

- Phase I/II Environmental Site Assessment (ESA) (ASTM E 1527)
- ODOT ESA Screening, Phase I and II ESA
- ODOT Categorical Exclusion (CE) Document
- Environmental Compliance Audit
- Lead-based Paint Survey
- Mercury Containing Materials Survey
- Paint Corrosion Condition Assessment
- Ground Penetrating Radar (GPR)
- Spill Prevention, Control & Countermeasure (SPCC) Plan



Asbestos Services

- Asbestos Surveys
- Asbestos Abatement Design
- Asbestos Abatement Oversight and Owners Representation
- Abatement Air Monitoring and Clearance Testing
- Employee Awareness Training

Ecological Services

- Wetland and Stream Delineation
- Habitat Assessment (includes completing QHEI, HHEI, ORAM, VIBI, HMFEL)
- Jurisdictional Determination (JD) Completion
- Section 401/404 Permitting
- Wetland Mitigation Design
- Stream and Wetland Water Quality Sampling



Underground Storage Tank (UST)

- UST Installation and Removal Inspection
- BUSTR Tier Evaluations
- Petroleum Contaminated Soil (PCS) During Construction
- Mitigation Design and Management

Stormwater Management

- Stormwater Pollution Prevention Plan (SWPPP) During Construction
- Construction SWPPP Inspection and Industrial SWPPP Development

Health and Safety

- Mercury Vapor Exposure Assessment (Gymnasium Flooring)
- Health and Safety Plan Development and Inspection
- Employee Exposure Monitoring—Lead, Asbestos, Particulates, Petroleum Volatiles

Remediation

- Soil and Groundwater Contamination Delineation
- Mitigation Planning and Design
- Hazardous Material Emergency Spill Response



Surveying Services

Rii has state-of-the-art survey equipment, software, and professional surveyors to perform and manage projects. Our survey team performs detailed land surveys for determining and documenting existing site features of topography, buildings locations, utilities and structures, property corners, boundaries, right of way and easements. Additionally, our experienced survey crews establish vertical/horizontal control prior to and during construction of buildings, utilities and infrastructure.

In addition, we provide subsurface utility engineering (SUE) using specialized geophysical equipment to designate and locate underground utilities and structures. Ground Penetrating Radar (GPR), a non-destructive inspection method, is also another method used to locate utilities that Rii maintains in-house. Rii's survey team is well trained in all types of surveying, from small private boundary surveys, to complex roadway and utility location projects and site development for all entities.

Surveying Services

- Topography/boundary/bathymetric surveys
- Subsurface utility engineering
- Mapping
- Ground penetrating radar
- Aerial photography
- Utility marking



Surveying equipment and software includes:

- Trimble R8 GNSS GPS Receivers (utilize ODOT's VRS network GPS system)
- Trimble 5603 Robotic Total stations
- Trimble TSCII Data Collectors
- TOPCON GTS-3B Total Stations
- Leica SR530 GPS Receivers
- Lieca NA2002 Digital Level
- Topcon Automatic Level
- MetroTech 9810 Utility Locators
- Radio Detection RD433 Utility Locators
- Schonstedt GA-52Cx Locators
- Ground Penetrating Radar (GPR)
- AutoCAD Civil3D 2010

Rii also maintains AutoCAD Civil3D 2010, as well as Microstation V8XM with GEOPAK, and plotters for production of hard copy mapping at any requested scale. Rii currently has a Design Jet 1055 CM, with 1200 dpi resolution and high-speed printing.

Rii's many years of surveying experience means our employees are well trained in all types of surveying practices. Our field crews are always up to date with current surveying standards in order to provide our CADD operators with the most complete field data possible, while helping to eliminate confusion during the mapping process.



Rii's surveying staff was very diligent in collecting field data in many areas with difficult terrain and coordination of access on private properties. Rii provided an overall detailed and accurate base mapping for our use in preparation of the design and construction plans. In general, they were very responsive to our needs and provided a complete and quality product.

– Steven A. Mess, PE, Senior Associate, Malcolm Pirnie – in regards to the City of Columbus Hap Cremean Water Plan Raw Water Line



Geotechnical Services

Rii has been engaged in + engineering and laboratory testing services since the firm's inception. Our vast project experience includes subsurface investigations for municipal, transportation and commercial development projects. Additionally, we have provided geotechnical expertise to local, state and federal projects involving design of deep foundations, slope remediation, retaining walls, tunneling systems and pavements.

Our in-house fleet of drilling vehicles includes both truck- and ATV-mounted rigs. We also possess specialized equipment for performing in-situ pavement and subgrade evaluations. This includes the Automated Dynamic Cone Penetrometer (ADCP) which determines in-situ strength and thickness of soils, unbound granular base and subbase layers and subgrades, and the Lightweight Deflectometer (LWD) which determines the elastic modulus of the pavement structure.

Overall services include:

- Soil and Rock Drilling
- Geotechnical Instrumentation Installation and Monitoring
- In-situ Soil and Rock Testing for Tunneling Systems
- Laboratory Classification and Specialty Testing of Soil and Rock
- Bearing Capacity and Settlement Analysis of Shallow and Deep Foundation Systems
- Slope Stability and Seepage Analysis
- Design of Mechanical Slope Retention Systems
- Retaining Wall, Sheet Piling and Anchor System design

- Pavement Design
- Geophysical Investigations
- Hydrogeological Studies
- Dewatering Planning Development

Rii operates and maintains accredited ASTM and AASHTO soil and material testing laboratories throughout the state of Ohio, as well as mobile laboratory locations. Our corporate office laboratory facility is a fully equipped laboratory capable of handling most ASTM and AASHTO testing of soil, aggregate, Portland cement concrete, hot mix asphalt and masonry. Classification, strength, compressibility, permeability and California bearing ratio tests are routinely performed.



Rii is prequalified with the Ohio and Indiana DOTs for the following services:

- Geotechnical Engineering Services
- Geotechnical Testing Laboratory
- Geotechnical Field Exploration
- Geotechnical Drilling Exploration

Geotechnical Equipment List

Model	Drilling Capabilities	Model Year	Purchased New or Used
CME 750X ATV w/ auto hammer	Hollow stern auger drilling depths 500+ feet; rock (wireline) core and rotary drilling 1000+ feet	2001	12/07/2001 new
CME 750 ATV w/ auto hammer	Hollow stern auger drilling depths 500+ feet; rock (wireline) core and rotary drilling 1000+ feet	1974	Rebuilt in 2010; 08/01/1996 used
B53 Truck Mounted Rig w/ auto hammer	Hollow stern auger drilling depths 250+ feet; rock (wireline) core and rotary drilling 1000+ feet; Angle drilling up to 30°	1986	02/2007 newly manufactured
Vertek ADCP Trailer Assembly	Automated Dynamic Cone Penetrometer, capable of testing subgrade soils to a depth of 50 inches	2008	04/24/2009 new
DT 4700 Truck		1999	01/20/2001 new
40,000 GVW Trailer		2000	01/20/2001 new
3500 Stake Body Support Truck #139		2007	2007 new
2500 Pick-up Truck 124		2008	2008 new
Drilling Item	Description		
4 - 1/4" HSA (hollow stem augers) (5' augers)	Various quantities in good condition		
3 - 3/4" HSA (5' augers)	Various quantities in good condition		
2 - 1/4" HSA (5' augers)	Various quantities in good condition		
4.0" SFA (solid flight augers)	Various quantities in good condition		
10' NQ2 core barrel	Various quantities in good condition		
AWJ rods (5' and 10')	Various quantities in good condition		
4" HW 300' casing w/ advancer	Various quantities in good condition		
10' HQ2 core barrel	Various quantities in good condition		
10' HQ3 core barrel	Various quantities in good condition		
2-5' HQ3 core barrel	Various quantities in good condition		
NQ casing - 250'	Various quantities in good condition		
HQ casing - 400'	Various quantities in good condition		



Marcia Majidzadeh Lampman
Executive Vice President (Rii)



Education:

BS, Economics, The Ohio State University

Background:

As Executive Vice President of Rii, Ms. Lampman oversees the creation and implementation of all aspects of corporate branding, performs business development and assists with general firm operations. She is very involved with the majority of the firm’s clients, and serves as the Client Manager for ODOT, City of Columbus DPS, COTA and GCRTA, to name a few. Ms. Lampman has served in the Project Executive role for many of Rii’s major contracts. Her responsibilities include ensuring that each member of the project staff meets the required levels of professionalism, service and dedication as well as provide support and guidance. As the potential successor to her mother, Farah B. Majidzadeh, Ms. Lampman is a confidant and advisor to the Chief Executive Officer.

Relevant Experience:

- COTA General Transit Planning and Engineering, Columbus, Ohio (2009-2011, 2012-present)
- COTA Cleveland Avenue Bus Rapid Transit (BRT), Columbus, Ohio
- COTA McKinley Avenue Facility, Columbus, Ohio
- Pedestrian Safety Improvements, Franklinton Community Mobility Plan, City of Columbus, DPS
- General Engineering Task Order, City of Columbus, DPS
- UIRF Task Order, City of Columbus, DPS
- Highway Construction Supervision and Inspection Projects, ODOT (various districts statewide)
- COTA Design and Construction Management Services for Improvement to Two Downtown Transit Terminals, Columbus, Ohio

Years of Experience: 30

Years with Firm: 30



Jefferey S. Morgan, LEED AP

Cost Estimating

Education: BS, Construction Management and Technology, Bowling Green State University

AS, Construction Technology, Sinclair Community College

Registrations: LEED AP

Years of Experience: 29

With Rii since: 2000

Mr. Morgan is an experienced construction management professional with a wealth of public agency project experience serving as project manager, lead estimator and CPM scheduler, completing more than \$200 million in total costs as Project Manager and \$750 million as Lead Estimator. Mr. Morgan has a wealth of public agency project experience, having provided CMA, At Risk and Owner's Representation for Bowling Green State University, Ohio Department of Corrections, Ohio Department of Transportation, Central Ohio Transit Authority, Ohio Facilities Construction Commission, Ohio Department of Administrative Services, Ohio State University, Ohio University, Miami University, Kent State University and a number of K-12 Districts across Ohio.

Project Experience:

Renovation to Fields Avenue Facility, COTA, Columbus, Ohio. As a subconsultant to Gilbane, Mr. Morgan provided phased cost estimating services for all building systems, materials, envelop, and exterior needs required for the renovation and new CNG fuel station.

Laketrans Headquarters Renovation and Improvements, Painesville, Ohio. Rii is teaming with R.L. Bowen + Associates on the renovation and improvements to the Laketrans headquarters. Mr. Morgan is providing phased cost estimating services for conceptual design, design development, and construction documents.

Design and CM/PM Services for Improvements to Two Downtown Transit Terminals, COTA, Columbus, Ohio. Project Manager responsible for daily operations and performance of Project Team throughout design, construction and closeout phases. Project includes the complete renovations of two existing bus terminals located in downtown Columbus. Projects include upgrades of all terminal elements to most current COTA design standards as well as current building codes, ADA standards and green building concepts. To provide the best experience to customers and the community, both terminal renovations will take place concurrently, and bus service will remain in operation throughout construction.

McKinley Avenue Facility, COTA, Columbus, Ohio. Project Estimator/Scheduler. Prepared detailed phase estimates for the McKinley Avenue Bus Storage and Maintenance Facility. Project included intensive renovations and CNG upgrades to COTA's 400,000 square foot McKinley Avenue bus facility.

Training:

30 hours OSHA

Primavera Scheduling P6

Primavera Submittal Exchange

Planswift

Microsoft Project

Prolog Project Manager

Software:

Timberline Estimating

SureTrak

Paydirt / Cut / Fill

Key Personnel



Robert LaDuke, PE

Director – Municipal Engineering Services

Mr. LaDuke has more than 30 years of experience designing and managing hundreds of transit, municipal, residential, and commercial projects involving site/civil engineering. His expertise includes the design of roads, park and rides, stormwater management systems, grading, sanitary sewers, and water mains. He stays involved in all project phases from planning, design and permitting to bidding and construction engineering tasks. Rob has worked with numerous public and private agencies and continually stays abreast of standards, guidelines and requirements.

Education:

BS, Civil Engineering,
University of Michigan

Registrations:

Professional Engineer,
Ohio #74491

NASSCO PACP/MACP,
#U-212-14678

Years of Experience:

33

Project Experience:

COTA General Transit Planning and Engineering, Columbus, OH - Mr. LaDuke serves as Project Manager for municipal services for the on-call task order contract. Since 2009, Rii has been a subconsultant to TranSystems performing civil/site design, geotechnical engineering, surveying and cost estimating services for various projects throughout Central Ohio. Mr. LaDuke provided design services for the following projects:

- **Delawanda Park and Ride Parking Lot Extension** – Detailed design for the extension of the existing park and ride facility on High Street. Provided design, surveys, geotechnical and preparation of a right of way dedication instrument.
- **North High Street Layover** – Provided final design of the site including storm detention, bio-swales, sanitary, water service, new sidewalks, ADA ramps, reconditioning of the side street Westview and other normal site design elements.
- **New Albany Park & Ride** – Design of parking lot for 82 spaces with infrastructure for expansion of an additional 60 spaces. A new bus lane with sidewalks was also designed.
- **Canal Winchester Park & Ride** – Design of new park and ride facility along with plans for demolition of buildings on site.
- **Easton Transit Center** –The transit center was reconfigured to enable more busses to use the facility. Design included pavement design, site layout with turning movement analysis, grading, and stormwater management. .

COTA, Cleveland Avenue Bus Rapid Transit (BRT), Columbus, OH. Rii performed professional engineering and surveying services for the design of a transit center and for multiple bus stop locations along Cleveland Avenue between downtown Columbus and Polaris Parkway in Westerville. Rii provided pavement design, site layout with turning movement analysis, stormwater management system design, and working with various governmental agencies to obtain approvals and permits for the Northland Transit Center. Rii developed right-of-way acquisition drawings for the numerous proposed bus stops along the BRT route.



Key Personnel

COTA, Design and Construction Management Services for Improvement to Two Downtown Transit Terminals, Columbus, OH. - Sr. Project Engineer. Rii provided design, and Program and Construction Management (PM/CM) services for improvements to two downtown transit terminals. The terminals that were renovated are located at 25 East Rich Street and 33 West Spring Street and serve daily express bus routes to COTA's passengers. The project was completed in 2015.

Brookpark Rapid Transit Improvements, GCRTA, OH. Design Engineer. Project Scope entailed the design and plan preparation of the parking lots redesign located on the east and west sides of the station. Pavement design and stormwater facilities including dry detention ponds/underground detention will be designed with emphasis on sustainable design and LEED requirements.

Urban Infrastructure Recovery Fund, General Engineering, COC, DPS. Project Manager/Lead Design Engineer. There were three tasks under this contract. The most relevant was the Clintonville Median and Crosswalks project, which consisted of replacing existing non-conforming curb ramps, constructing new curb ramps and installing brick crosswalks. Tasks included depicting location of medians and brick crosswalks, grading and dimensioning of curb ramps, providing detailed MOT plans, addressing City comments and completing contract documents. The challenge in developing MOT plans was keeping the route simple for the driving public to navigate while maintaining enough room for the contractor to work efficiently.

Concrete Pavement Resurfacing & New Construction, Marysville, OH. Rii was contracted to provide engineering consultant services for the design and construction of new container lots, along with modifications to main roadways and associate parking lots across the site. RI conducted surveying, site assessment, pavement and roadway design, and construction inspection services. Design elements included demolition of proposed areas, traffic analysis, drainage evaluations, SWPPP design drawings, geometric design, protection with fencing and concrete barriers, lighting system analysis, traffic pattern evaluations, and maintenance of traffic plans.



Key Personnel



MARK WARD, PS

Survey Manager

With more than 30 years of experience, Mr. Ward is Rii's Survey Manager and is responsible for project management and coordination of field crews; administration; client relations; meeting attendance; quality control; project scheduling; monitoring of project progress; preparation of proposals; and final project approval. He has managed and performed ALTA, boundary, ROW, easement, topographic, utility, hydrographic, aeronautical and As-Built surveys for public and private infrastructure and site development projects. His experience includes work on major highway, bridge and street rehabilitations; stormwater, sanitary sewer, water distribution system improvements; WTP and WWTP facilities expansions and renovations; dam and reservoir improvements and new site developments. He is proficient in the operation of Topcon Total Stations, TDS data collectors and Theodolites and levels, as well as, various surveying software including AutoCAD, Simplicity Systems Survey 3, 4 and 5 and Land Innovations. He has performed work for many state and local government agencies including COTA, ODRC, ODOT, ODNR, OFCC, Franklin County, City of Columbus, and CRAA.

Education:

The Ohio State University
Columbus State
Community College -
various

Registrations:

Professional Surveyor,
Ohio # 7514

Years of Experience:

34

PROJECT EXPERIENCE

GCRTA, Brookpark Rapid Transit Station, Cleveland, Ohio. Survey Manager responsible for subsurface utility engineering services (SUE) for the new eastern side headhouse with associated bus loop and kiss-n-ride drop off area; new western side access with the reuse / demolition of the existing 2002 ADA upgrade; rehabilitation / reconstruction of the 1969 platform area; and reconstruction of the existing parking areas, both east and west side.

GCRTA Triskett Bus Maintenance Facility, Cleveland, Ohio. Survey Manager for the replacement an existing 100 bus storage garage and maintenance facility with a new full service facility. A topographic survey was completed for the property in advance of the building design and construction. The surveys included location of all existing utilities, topographic features and existing structures.

COTA, General Transit Planning and Engineering Services, Columbus, Ohio. As a sub-consultant to Transystems, Mr. Ward serves as Rii's Task Leader for the on-call task contract providing surveying, ROW and SUE services for various COTA projects involving park and rides, transit centers and bus stops and shelters. Projects have been ongoing since 2009.

COTA, Cleveland Avenue Bus Rapid Transit (BRT), Columbus, Ohio. Rii performed professional engineering and surveying services for the design of multiple proposed transit centers, park-and-ride facilities and bus stop locations along Cleveland Avenue between downtown Columbus and State Route 161. Mr. Ward performed surveying services.

COTA, McKinley Avenue Facility Renovations, Columbus, Ohio. Survey Manager for petroleum products of suspect adjacent R.O.W. properties.



Key Personnel



Jonathan Sterenberg, PE Director – Geotechnical Services

Summary of Experience:

As Director – Geotechnical Services, Mr. Sterenberg’s responsibilities include developing scope of services and cost estimates, project planning and coordination of field and laboratory services, engineering analysis and calculations, report preparation, project meetings and schedule updates, and final project invoicing. Mr. Sterenberg is experienced in managing and conducting subsurface investigation and construction observation and materials testing services for commercial, industrial, residential, and municipal projects. Mr. Sterenberg has provided shallow and deep foundation recommendations, designed retaining walls, performed slope stability analyses, provided subgrade remediation recommendations, and performed pavement thickness analyses.

Project Experience:

Brookpark Rapid Transit Improvements, GCRTA, OH. Geotechnical Engineer. Project Scope entailed the design and plan preparation of the parking lots redesign located on the east and west sides of the station. Pavement design and stormwater facilities including dry detention ponds/underground detention will be designed with emphasis on sustainable design and LEED requirements. *Mr.*

GCRTA University Circle Transit Station at Cedar Avenue, Cleveland, Ohio – Rii provided geotechnical investigation services for this proposed design and renovation of the Cedar Avenue station.

COTA General Transit Planning and Engineering, Columbus, OH - Mr. Sterenberg serves as Project Manager for geotechnical services for the on-call task order contract. Since 2009, Rii has been a subconsultant to TranSystems performing civil/site design, geotechnical engineering, surveying and cost estimating services for various projects throughout Central Ohio. Geotechnical services and recommendations were provided for the following-

- ***Park and Ride, Hilliard, Ohio*** – Subsurface Investigation and Analysis for an aerial sign for a new park and ride facility at an existing parking facility.
- ***Near East Transit Center, Columbus, Ohio*** - Subsurface Investigation and Analysis for new transit center on Columbus’ east side. The proposed multi-story building created a ticketing area, lounge facility, as well as rental office space. Project included geotechnical drilling and testing, demolition specifications, building and pavement foundation design.
- ***COTA, Nationwide Boulevard Bus Stop Pad Design, Columbus, Ohio*** – Provided engineering services to develop construction plans for two bus stop pads along Nationwide Boulevard in the vicinity of the Nationwide Arena. The bus stops are located on Nationwide Boulevard at the northeast and southwest corners. Civil, geotechnical and survey services were utilized.



Education:

MS, Civil Engineering,
The Ohio State
University

BS, Civil Engineering,
Ohio Northern
University

Registrations:

Professional Engineer,
Ohio #70989

Years of Experience:

16

Michelle Eckels, CPG, LEED Green Assoc.

Environmental



Name of Employer:
Resource International, Inc.

Years Experience:
23

Years with Rii:
21

Education:
BS, Geological Sciences, The Ohio State University

Registrations:
Certified Professional Geologist #11164

LEED Green Assoc.
#10782030

As Director of Rii's Environmental Services Division, Ms. Eckels' responsibilities includes business development, technical proposal development, contract negotiations, project management, and client and regulatory agency meetings. Ms Eckels's provides project management and supervision of services including environmental site assessments (Phase I and II ESAs), asbestos and lead surveys, hydrogeologic investigations, wetland delineations and ecological surveys, leaking underground storage tank closure and remediation, construction storm water sediment and erosion control plans and weekly inspections and environmental drilling projects.

Project Experience:

Canfield Hall New Wing Bathroom Renovation; The Ohio State University, Columbus, OH. Hazardous Materials PM. Ms. Eckels investigated and oversaw abatement of hazardous materials including asbestos and lead-based paint. Assessment included a list of a building materials sampled and analyzed, a list of those identified as ACM, and a description of testing methods in which they were identified. Final report included quantity and location of ACM, potential for disturbance throughout the project, and estimated costs for removal. Rii served as a sub to Glaserworks. Project included removal of existing resident rooms and bathrooms on four floors to be renovated to 5-6 new privatized bathrooms.

Drainage Improvements – Academic Core North; The Ohio State University, Columbus, OH. Hazardous Materials PM. Ms. Eckels completed the hazardous material survey on McCracken Power Plant as part of the Schematic Design phase. The survey included the evaluation for the presence of ACM as suspect to be impacted as part of the project. The survey also included a report and CADD drawings.

HPB Renovation; University of Cincinnati, Cincinnati, OH. HazMat Consultant. Completed survey work which included assessment for the presence of ACM, lead paint, and mercury contamination in laboratories, and PCB-containing equipment identified during the sampling and evaluation that potentially will be disturbed during renovation activities. Provided summary report and is developing the abatement cost estimate and bid specs.

Stillman Hall Renovation; The Ohio State University, Columbus, OH. HazMat PM. Ms. Eckels served as the HazMat PM for the abatement of pipe insulation and floor tile abatement for the renovation. Work included an asbestos survey of the entire renovation area, lead-based paint survey, bid documents and abatement oversight. Project involved renovating the basement and 2nd floor, which are part of a building originally built in 1937.

Lin Hall, College of Fine Arts Infrastructure Upgrade; Ohio University, Athens, OH. HazMat PM. Ms. Eckels served as the HazMat PM for the hazardous materials survey at Lin Hall, part of the College of Fine Arts Infrastructure Upgrade. As a subconsultant to Glaserworks, Rii completed a hazardous materials assessment which included the hazardous material survey, containing material and lead paint that would be distributed during renovation. A final report was developed and submitted.

Catalyst Consulting Group

BIOGRAPHY

Leslie Yerkes is President of Catalyst Consulting Group, Inc.

(www.leslieyerkes.com) an organizational development and change management consulting firm based in Cleveland, Ohio. Leslie's business goal is to help people create sustainable organizations. Her life goal is to create a framework in which people can draw on their own resources to find creative solutions. Her clients have included Chrysler Corporation, The Cleveland Clinic Foundation, United Church of Christ, ArcelorMittal Steel USA, and NASA. A subspecialty of Leslie's is making non-profits healthy and sustainable.



Leslie is a recognized consultant, author, and speaker throughout the United States and Europe. She is considered an expert in her field and is frequently quoted in the media. She is the author of “Fun Works: Creating Places Where People Love to Work” and Motivation in the 21st Century without Kicks or Carrots, a co-author of “301 Ways to Have Fun at Work”, “Beans: Four Principles for Running a Business in Good Times or Bad” and “They Just Don’t Get It! Changing Resistance into Understanding.” Her works have been translated into more than a dozen languages selling hundreds of thousands of copies worldwide.

A cum-laude graduate of Wittenberg University and Case Western Reserve University, she has taught at John Carroll University, Baldwin Wallace College, and is on the faculty at the Weatherhead Dively Center of Executive Education, Case Western Reserve University.

Leslie’s intrinsic motivation has taken her and her company into her thirty-second successful year of business.

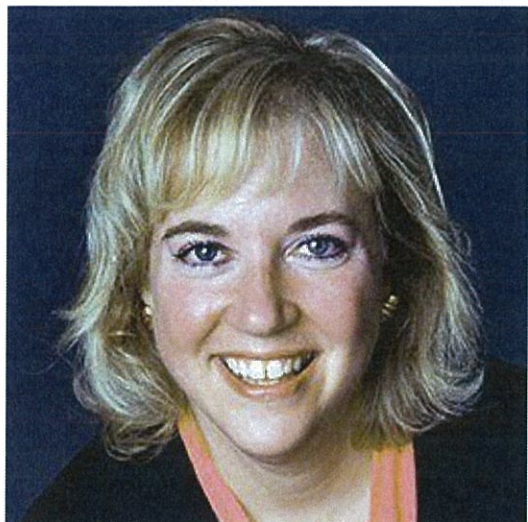
COMPANY BACKGROUND

Catalyst Consulting Group, Inc. was founded by Leslie Yerkes in 1987 as an organizational development / change management consulting firm. Based in Cleveland, Ohio CCG works with organizations large and small, for profit and not-for-profit in all industries. The CCG mission is to help build healthy, enduring and sustainable organizations. The CCG credo is ‘consulting with a conscience.’

PRESENTER REFERENCES

Leslie designed and teaches the Master Facilitation Certificate at the Weatherhead Dively Center for Executive Education. She has facilitated community planning experiences associated with strategic planning and facility planning for Cuyahoga Community College Metro Campus, The Village of Bratenahl, The City of Lakewood, Lakewood Congregational Church and many more for-profit, non-profit and governmental organizations.

For more information go to
www.leslieyerkes.com



Leslie Yerkes

Leslie Yerkes is a Weatherhead Affiliate instructor and is president of Catalyst Consulting Group, Inc. an organizational development and change management consulting firm based in Cleveland, Ohio. Leslie's business goal is to help people create sustainable organizations. Her life goal is to create a framework in which people can draw on their own resources to find creative solutions. Her clients have included Chrysler Corporation, The Cleveland Clinic Foundation, United Church of Christ, International Steel Group, Mittal Steel USA-Cleveland, and NASA. A subspecialty of Leslie's is making nonprofits healthy and sustainable.

Leslie is a recognized consultant, author, and speaker throughout the United States and Europe. She is considered an expert in her field and is frequently quoted in the media. She is the coauthor of the bestselling *301 Ways to Have Fun at Work*, *Beans: Four Principles for Running a Business in Good Times or Bad*, and *They Just Don't Get It! Changing Resistance into Understanding*. Being released in 2007 are *Fun Works: Creating Places Where People Love to Work* and *Beyond Kicks and Carrots: Motivation in the 21st Century*. Her works have been translated into more than a dozen languages selling hundreds of thousands of copies world wide.

A graduate of Wittenberg University and Case Western Reserve University, she has taught at John Carroll University and Baldwin Wallace College. She is on the faculty at the Weatherhead Dively Center of Executive Education and the Mandel School of Applied Social Sciences, Case Western Reserve University.

Leslie's speaking style is highly interactive and full of tangible application. Her energetic style, relatable stories, and real life experience ensure a presentation that will exceed your expectations every time. She shares her passion on the subjects of leadership, management, teamwork, communication, fun at work and self motivation.

C Profile of Team and Contact Information

1. HWH Architects Engineers Planners Inc., will be the primary consultant and as such will be the architect and engineers of record. The balance of the consulting team listed in this proposal will work as subcontractors to HWH.
2. The consulting team includes the firms as listed below:

HWH Architects Engineers Planners Inc.

600 Superior Avenue East, Suite 1100
Cleveland, OH 44114

Contacts: William Bradt, AIA

Craig R. Brown, ASLA

Phone: (216) 875-4000

Fax: (216) 875-4125

Staff: 85-100

Disciplines: Architecture, Landscape
Architecture, Civil/Structural, Mechanical,
Electrical, Interiors and Track

Resource International, Inc.

6350 Presidential Gateway Columbus, OH
43231

Contact: Marcia Lampman

Phone: (614) 823-4949

Fax: (614) 823-4990

Staff: 100+

Disciplines: Civil/Structural, Environmental,
Geotechnical, Survey, Testing, Track

Smith Architects LLC

16105 Lorain Avenue, Unit 1
Cleveland, OH 44111

Contact: Bonnie Smith

Phone: (216) 664-1111

Fax: (216) 664-1112

Staff: 3-5

Disciplines: Architecture, Specifications

**K&J Safety & Security Consulting
Services, Inc.**

3257 Elcano Lane

Cantonment, FL 32533-6876

Contact: Robert Boone

Phone: (850) 968-0901

Fax: (850) 968-0902

Staff: 10-15

Disciplines: Safety, Track, Value Engineering

Catalyst Consulting Group

Bratenahl, OH

web site: www.leslieyerkes.com

Contact: Leslie Yerkes

Phone: (216) 849-9551

email: catalystconsultinggroupinc@gmail.com

Discipline: Community and Stakeholder
Engagement



Client and Stakeholders



PROJECT MANAGEMENT



Advance Your Vision

Keith Rintamaa PE - Principal in Charge

Craig Brown ASLA - Project Contact and Project Manager

Megan Zupan PE - Asst. Project Manager

DESIGN

FIELD INVESTIGATIONS

ENGINEERING

HWH
 Craig Brown
 Tim Olland
 Michele Lawson

RII
 Mark Ward
 Michelle Echols
 Jonathan Sterenberg

HWH
 James Brewer
 Timothy Reed
 Rob Szule
 Bradley Cochran
 Rebecca Amendola

SMITH
 Bonnie Smith
 AIA

SMITH
 Bonnie Smith
 AIA

K&J
 Bob Boone

RII
 Rob LaDuke
 Jeff Morgan

CATALYST
 Leslie Yerkes
 Johnnie Byrne

K&J
 Bob Boone

Section 4

Related Experiences and References

Project Sheets of HWH

- a Related Experience of Team Members
- b Sub-Consultant's Project and Client Information
(Federally Funded Projects Included)
- c HWH References
 - Brian Temming GCRTA
 - Carol Klinger Hallrich and formerly Goodyear
 - Dan Applegate Arlington Memorial Gardens
(Cincinnati Area Client)

1) Multi-Discipline Firm



HWH has been a downtown Cleveland business since 1908 providing services of:

- ❖ Architecture
- ❖ Civil Engineering
- ❖ Structural Engineering
- ❖ Mechanical and Process Engineering
- ❖ Electrical Engineering
- ❖ Controls Engineering
- ❖ Landscape Architecture
- ❖ Programming
- ❖ Space Planning
- ❖ Interior Design

2) GCRTA – Lee-Van Aken & Warrensville Shaker Stations Cleveland, Ohio



Station Scope Included:

- ❖ Complete Demolition & New Engineering
- ❖ New Elevations
- ❖ ADA Compliant Access to Station
- ❖ Track ADA Pedestrian Crossing
- ❖ RTA Signage
- ❖ Parking and Landscaping

Sub consultants included Somat Engineering & Sandhu Associates

3) General Electric - Transportation

Erie, Pennsylvania



HWH was contracted to reorganize the General Electric Transportation Learning Center in Erie, Pennsylvania. The facility produces high end electric locomotives.

Project Scope Included:

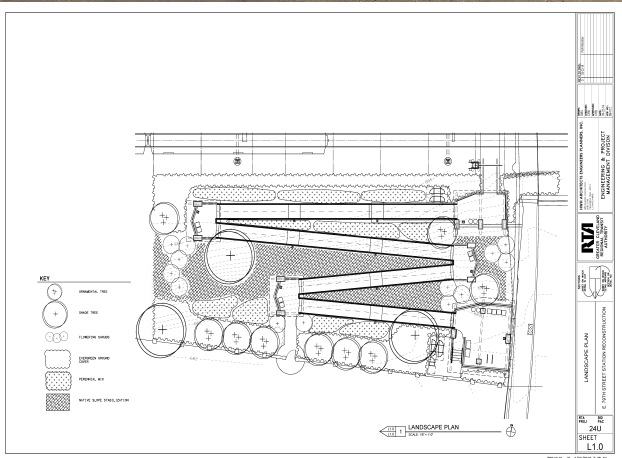
- ❖ Demolition of 1/3 of existing center
- ❖ Expansion to double size
- ❖ Complete Engineering for all disciplines
- ❖ Parking & road alignments
- ❖ Patios, landscaping, water harvesting & sustainable elements
- ❖ Kitchens, cafeterias, lobby, classrooms & offices

Rail Items Include:

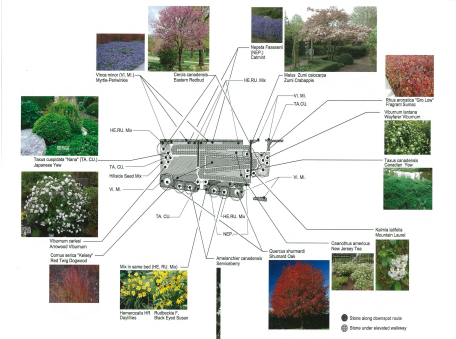
- ❖ 3 Rail crossings for vehicles
- ❖ Locomotive display & press conference area
- ❖ Track alignment to enter building

4 East 79th Street Station GCRTA

Cleveland, Ohio



HWH is currently assisting GCRTA with the construction of the East 79th Street Station. HWH has provided layout assistance, complete structural engineering, landscape design and SITES Certification to meet Federal Project Requirements. Our work has been for the enclosed waiting areas, ramps, stairs and new rail platform. Project completion is expected December 2020.



5) Settler's Landing

Cleveland, Ohio



HWH designed this park as the focal point of the city of Cleveland's Bicentennial Celebration in 1996.

The park is highlighted by:

- ❖ A 4' cantilever walk along the river and upper level walk
- ❖ A zig-zag ADA walk to north
- ❖ A fountain ring at water's edge
- ❖ An observation node as part of the RTA waterfront lines station with a Moses Cleveland inspired patio
- ❖ Breathtaking views of the river and lake

HWH coordinated the design with the city of Cleveland, Greater Cleveland Regional Transit Authority and The Army Corps of Engineering.

6) Arlington Memorial Gardens

Cincinnati, Ohio



HWH developed a Masterplan for 160 acres of the Arlington Memorial Gardens Cemetery in Cincinnati, Ohio. HWH has developed many of the site features at AMG and have recently completed construction of the first 2 4000sf buildings at the Tribute Campus.

HWH has provided :

- ◆ 100% Site Water Harvesting
- ◆ Feature Ponds, Waterfalls, Streams & Amenities
- ◆ Campus Tribute (8-acres) Environment with Celebration of Life Center & Embalming/Cremation Center
- ◆ \$1 Million Savings on Utility Services
- ◆ Various Gardens, Landscaping, Walks, Bridges & Site Features
- ◆ Miscellaneous Cemetery Burial Planning

Contact: Daniel Applegate
513-521-7003

Current Project: Tribute Campus

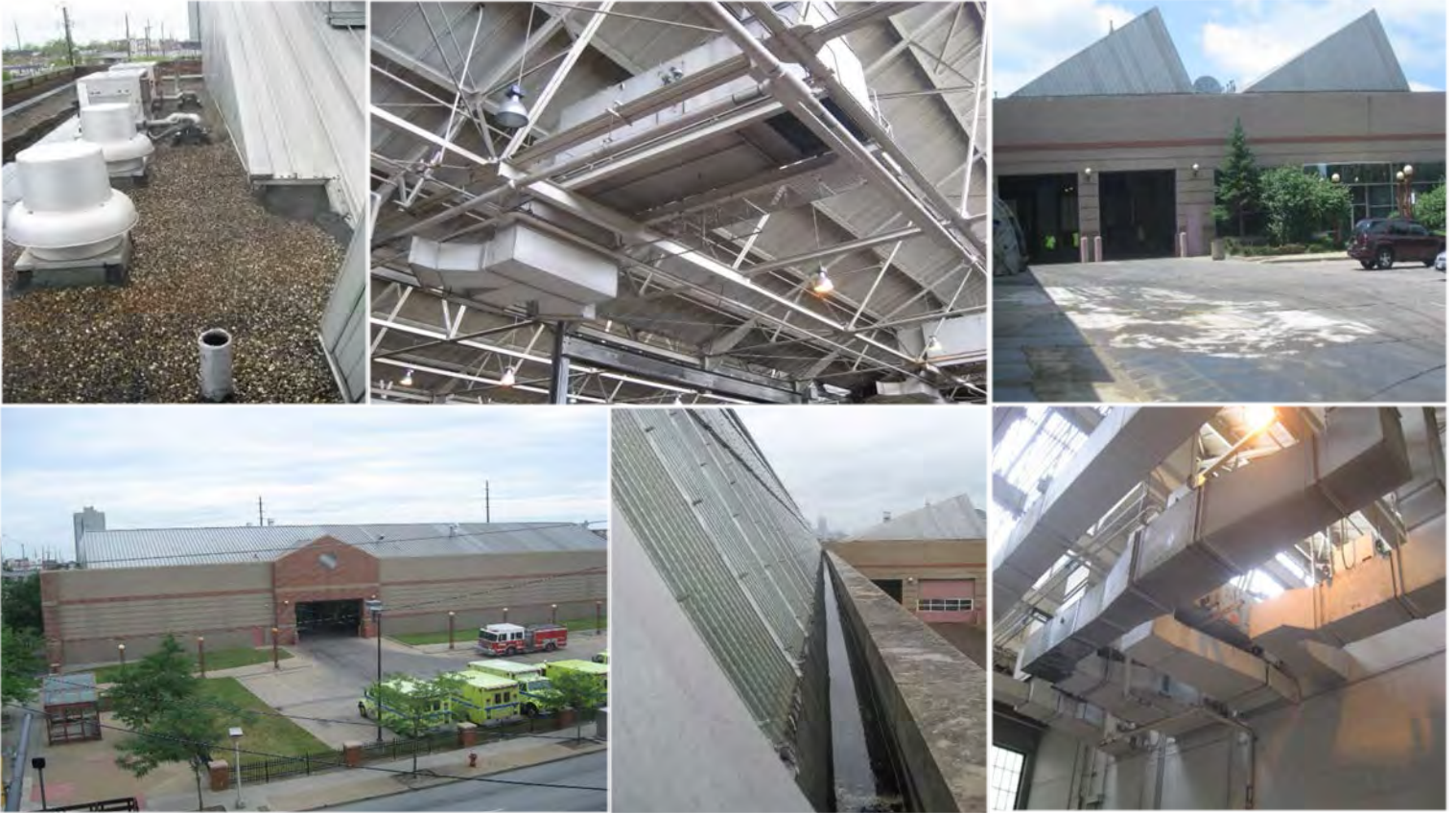
Size: 8 Acres
2 Buildings

Cost: \$3 to \$4 Million

7) CARR Center – City of Cleveland

Vehicle maintenance center to repair city owned vehicles

Repair Budget: \$1,250,000



A/E service include an initial investigation and report to review the building envelope and HVAC systems. We identified items in need of immediate repair that were twice the value of the budget. This project started out as reroofing project with minor HVAC repairs and evolved into HVAC repairs with limited masonry and roofing repairs to stop leaks until more fund were available.

Scope of repairs:

- ❖ HVAC replacement of smaller units serving the office areas and Repairing the larger units in the Garages
- ❖ Instillation of an expansion joint in a masonry wall
- ❖ Misc. temporary roofing repairs to stop leaks and limit ponding water

HWH consultant team included Smith Architect, Sandhu Associates & Risk Management

8) City of Cleveland – Glenville Service Garage

Cleveland, Ohio



HWH assisted the City of Cleveland in converting an existing building into a service garage for their Division of Streets. The facility is used to house salt trucks, service vehicles and street cleaners. It has been designed for minor repair, oil changes, service and general office spaces.

The Project Included:

- ❖ New concrete flooring
- ❖ New service bay doors
- ❖ Lighting
- ❖ Mechanical & Electrical systems
- ❖ Finishes

9) Goodyear | Summit Mall

Fairlawn, Ohio



In 2014 we were asked to review an existing 10,000 SF plus auto service store to convert it into a new Goodyear facility. Initially the project was to be a "quick fix" but then the leadership team realized that the close proximity to the Goodyear Headquarters and the larger than normal size would lend this location into being the perfect training facility and flagship store. HWH designed a new exterior façade, highlighting the Goodyear Wingfoot logo, set into a stone framed tower element. The glass walled walkway provides views of the service area.

A saw tooth window element allows for the complete visibility for observation of the service bays. The shop area includes state of the art lifts, tire machines, wheel balancers and even a tread analytics station. The project also features direct mall access, large customer waiting area, children's play area, two training and service bays and a twenty-four-seat training room.

10) Goodyear | Indian Trail

Indian Trail, NC



HWH was Architect of Record for this Goodyear Auto Service Center in North Carolina. HWH worked with the Planning Department to get this project approved into a new lifestyle center. It took 3 different site orientations to get the approval.

HWH provided all the architecture, civil engineering, mechanical engineering, structural engineering, and electrical engineering. The project featured:

- | | |
|--------------------------|-------------------------------|
| multi-level patio | sales area |
| pedestrian nodes | customer waiting |
| bike racks | 8 bay maintenance area |
| historic lighting | tire storage |

11) General Electric – Test Lab Facility/Rail & Turntable

Greenville, South Carolina



HWH provided engineering to upgrade the rail system at the South Carolina Power Generation Plant.

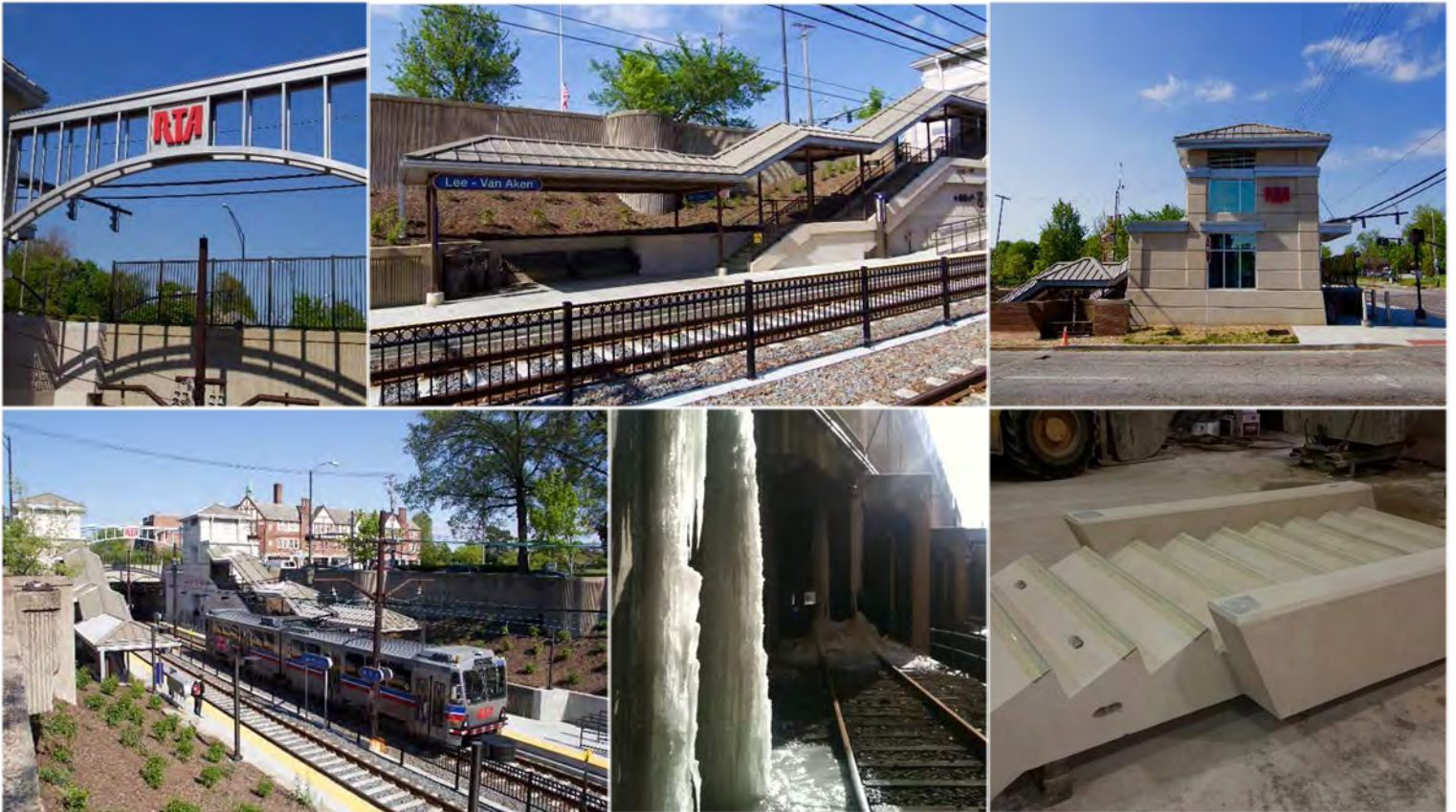
Scope Included:

- ❖ 2,500 linear feet of new rail siding
- ❖ New turn table
- ❖ Connection of siding to existing industrial tracks
- ❖ Road crossings at various plant locations

HWH provides on-going architecture and engineering at this facility.

12) GCRTA – On-Call Services

Cleveland Ohio



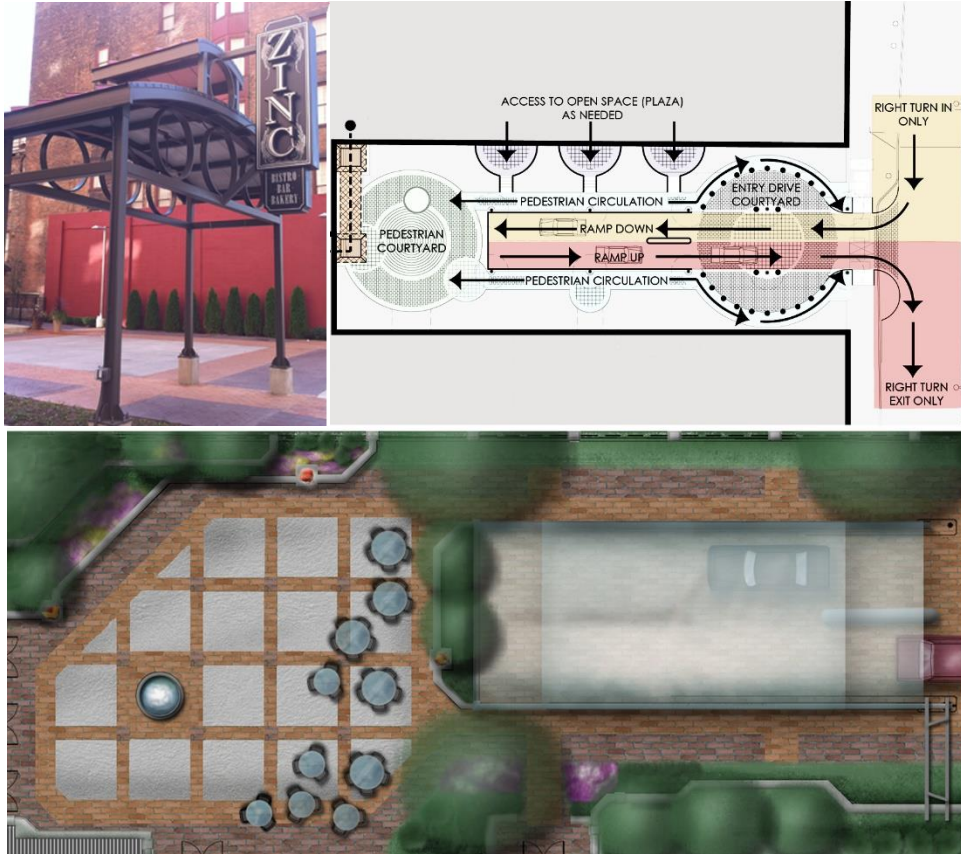
HWH has successfully completed two consecutive contracts for on-call architectural and engineering services for the Greater Cleveland Regional Transit Authority.

Our on-call assignments included:

- ❖ Major water leak identification
- ❖ Retaining wall repair report at Tower City
- ❖ Substation Electrical engineering
- ❖ ADA Paving
- ❖ Complete Redesign and engineering of 2 stations
- ❖ Precast boarding ramps and stairs

13) 668 Euclid Avenue Plaza

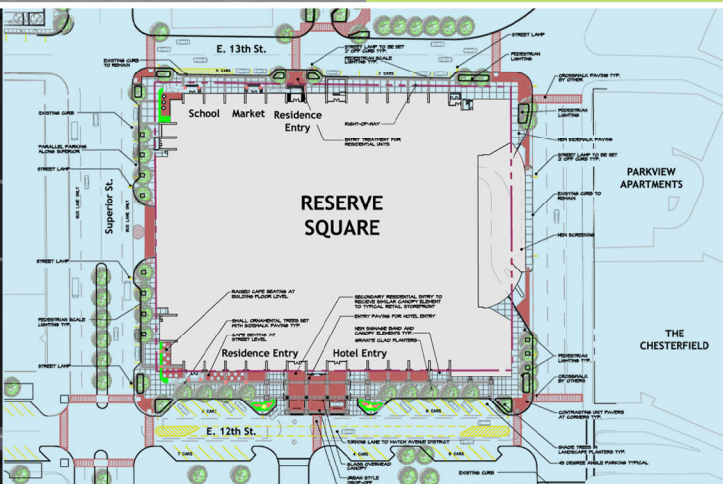
Cleveland, Ohio



In the heart of the Downtown Cleveland Business District, the K & D Group has transformed a historic department store into an apartment and commercial center. In order to better optimize resident views, an adjacent, non-historic, building was demolished, allowing for the creation of 668 Plaza. The Plaza pulls design elements from the adjacent Euclid corridor. Streetscape designs are seamlessly integrated into the entry court. The roof of the garage ramp has an RTA feel. The inner courtyard will service restaurant patrons at lunch with staging areas for evening bands. Design features include a water feature sculpture and three fire bowl torches to warm the space on cooler evenings.

The completed project has been widely recognized as an infill jewel in downtown Cleveland.

Owner: The K&D Group
Contact: Ms. Daren Harrison-Paganini
President
440-946-8715
Design: 2009-2010
Construction: 2010
Cost: Not Available



14) Reserve Square

Reserve Square Apartments and Embassy Suites Hotel occupies the 1700 Block of E.12th St in downtown Cleveland. Determined to have a community orientated building, Reserve Square Management contacted HWH for complete streetscape revitalization. A more inviting pedestrian level is created through angled parking, a corner café and user-friendly sidewalks lined with coordinated storefronts. Through careful multi-agency planning, HWH helped to integrate the Reserve Square streetscape into Cleveland's Avenue District.

Date: 2005-2007

Contact: Mr. Douglas Price
CEO K&D Group
(400) 946-3600

Relevant Experience of Team Members

The following is a list of relevant HWH Project Sheets and Projects, completed by our staff assigned to the Chestnut Street Multimodal Facility.

1 Multi-Discipline Firm

2 GCRTA Lee-Van Aken and Warrensville-Shaker Station

Keith Rintamaa, PE - Project Manager for Lee-Van Aken
Craig Brown, ASLA - Project Manager for Shaker-Warrensville and Site Design for Lee-Van Aken
Jim Brewer, PE - Structural Engineering
Rich Simon, PE - Mechanical Engineering Review
K&J Staff

3 GCRTA East 79th Street Station (*Current Project*)

Craig Brown, ASLA - Project Manager, Site Design
Jim Brewer, PE - Structural Engineering
Rebecca Amendola, Graduate Landscape Architect - SITES Certification (*Federal Mandate for project*)

4 General Electric Erie Rail Transportation

Keith Rintamaa, PE - Project Manager
Craig Brown, ASLA - Site Design, Civil Engineering
Jim Brewer, PE - Structural Engineering
Marwan Karim, PE - Electrical Engineering
Jason Gray, PE - Mechanical Engineering
Michelle Lawson, ASIOD - Interior Design

5 Settler's Landing - City of Cleveland

Craig Brown, ASLA - Project Manager, Site Design, Civil Engineering

6 Arlington Memorial Gardens, Tribute Campus - Cincinnati, Ohio

Craig Brown, ASLA - Project Contact, Site Design
Megan Zupan, PE - Project Manager, Structural Engineering
Bill Bradt, AIA - Architecture
Tim Reed, PE - Electrical Engineering
Rob Szule, PE - Mechanical Engineering
Jason Gray, PE - Mechanical Engineering
Brad Cochran, PE - Civil Engineering
Michelle Lawson, ASID - Interior Design

7 Carr Center- City of Cleveland

HWH Staff and Terry Angle, AIA (retired)
Bonnie Smith, AIA - Architectural Support, Specifications

8 Glenville Service Garage - City of Cleveland

Terry Angle, AIA (retired)
Bonnie Smith AIA - Architectural Support, Specifications

9 Goodyear Summit Mall Auto Service Center

Craig Brown, ASLA - Project Manager
Bill Bradt, AIA - Architectural Design
Jim Brewer, PE - Structural Engineering
Tim Reed, PE - Electrical Engineering
Rob Szule, PE - Mechanical Engineering
Michelle Lawson, ASID - Interior Design

10 Goodyear Indian Trail Auto Service Center

Craig Brown, ASLA - Project Manager, Site Design, Civil Engineering
Megan Zupan, PE - Structural Engineering
Marwan Karim, PE - Electrical Engineering

11 General Electric Greenville Test Lab / Rail & Turntable

Keith Rintamaa, PE - Project Manager
Brad Cochran, PE - Civil Support, Track Layout

12) GCRTA On Call A/E Services (2012-2021)

Craig Brown, ASLA - Project Manager
Bill Bradt, AIA - Architectural Design
Jim Brewer, PE - Structural Engineering and Project Specific Task Manager
Megan Zupan, PE - Structural Engineering
Tim Reed, PE - Electrical Engineering
Marwan Karim, PE - Electrical Engineering
Tim Reed, PE - Electrical Engineering
Brad Cochran, PE - Civil Engineering
Rebecca Amendola, Graduate Landscape Architect - Landscape Design
Smith Architects - Team Member
K & J Safety and Security - Team Member
Resource International Inc. - Team Member

13 Reserve Square Cleveland Ohio

Craig Brown, ASLA - Project Manager, Site Design, Civil Engineering

Other Projects where Team Members have worked Together:

Smith Architects and HWH Teamed

Pizza Hut Geneva
Axiom Inc. Commercial Feasibility Study
University of Akron
Cleveland State
City of Cleveland City Hall

Resource International Inc. and HWH Teamed:

North Coast Harbor City of Cleveland
Cuyahoga Community College Track Renovation and Masterplan
Cleveland Metroparks Headquarter Building and Site

Catalyst Consulting Group

Cleveland Police Stables Proposal
Village of Bratenahl

Federally Funded Projects



The following are some of the HWH federally funded transit projects:

- GCRTA Lee Van Aken Station - Design and Engineering project construction observation
- GCRTA University Cedar Station - Cost Estimating
- GCRTA Warrensville Shaker Station - Design, engineering, site/civil, project construction observation, sub-station
- GCRTA Central Maintenance Garage and Facility - Structural engineering
- GCRTA Coventry Station - Electrical Engineering
- GCRTA Tower City Multimodal Station - Investigation/Discovery, site/civil structural, track certification
- GCRTA Windemere Station - Structural engineering
- GCRTA East 79th Street Station - Structural design, engineering, landscape design, SITES Certification
- GCRTA Substation S 4 - Building Exterior
- GCRTA Brookpark Maintenance Shop - Electrical audit, safety audit
- GCRTA 120th Street Substation - Structural engineering
- GCRTA Windemere Canopy - Structural engineering
- GCRTA Central Bus Maintenance Facility - Structural engineering
- GCRTA Central Rail Maintenance Facility - Structural engineering
- GCRTA Michaels Diner - HVAC replacement (landlord responsibility)
- GCRTA Headquarters Building - Window replacement and facade evaluation



The following are Resource International federally funded transit projects:

- COTA McKinley Avenue Facility (Phases 1-3) - Design, survey, geotechnical, cost estimating
- COTA Two Downtown Transit Terminals - Design and PM/CM Services
- COTA Fields Avenue Facility - Field Superintendent and cost estimating
- COTA General Planning and Transit Services - Site/Civil design, survey, geotechnical, environmental
- GCRTA On Call A/E Services - HWH Team Member
- GCRTA East 134th Street Station Design - Team Member
- GCRTA Project Support Consultant
- GCRTA Euclid Corridor Reconstruction - Quality Analysis and materials testing
- GCRTA Brookpark Rapid Transit Multimodal Station - Site/Civil, geotechnical and SUL services
- GCRTA Trisket Bus Maintenance Facility - Site/Civil design, surveying
- Laketrans Renovation and Expansion of Headquarters Building - Cost estimating
- GDRTA - Project Management Services
- SARTA A/E Services - Team Member for geotechnical services



The following are Smith Architects federally funded transit projects:

- GCRTA A/E On Call Services 2018 - Team Member Architectural Support
- GCRTA A/E On Call Services 2020 - Team Member Architectural Support

The following 4 pages are K&J Safety and Security federally funded transit projects:

K & J Projects Summary – Active and Past

K & J Projects Summary – Active and Past		
Agency	Safety, Security and Emergency Management Related Projects	
		<ul style="list-style-type: none"> » Rail Heavy Repair & Overhaul Facility & New Carrollton West Yard Facilities Project, S&S Certification Tasks » MTA Purple Line Project - 5 affected WMATA Stations, S&S Certification Tasks <ul style="list-style-type: none"> - Bethesda Station – link to PL station – new south entrance - New Carrollton Station – link to PL station and new bus loop and parking lots - Silver Spring Transit Center – Link to PL station with a new mezzanine entrance access point - College Park Station, Link to PL station and new bus loop and drop off point configuration » I-66 Widening Project, S&S Certification Tasks <ul style="list-style-type: none"> - New TSB and ductbanks relocation for an existing TPSS » Pentagon Station Elevator Project, Limited S&S Certification Tasks » ATC Training Lab Upgrade Project, Limited S&S Certification Tasks » Alexandria Yard Project, ATC Upgrade Installation, Limited S&S Certification Tasks » System Wide Fare Gate System Replacement Program Project, Installation and Testing S&S Certification (Tasks) » Station Entrance Modernization Projects, S&S Certification Tasks <ul style="list-style-type: none"> - L'Efont and Ballston stations – new elevators, stairs and passageways
No.	Past Completed Projects	
1.	ASC Atlanta, GA	<ul style="list-style-type: none"> » Atlanta Streetcar Project, (Certification Rescue Mission) Limited Gap S&S Certification Tasks (2015) – Downtown Atlanta – 2.7 miles with 10 stations
2.	CATS Charlotte, NC	<ul style="list-style-type: none"> » Blue Line Expansion (BLE) Project, S&S Certification Tasks (2008-2017) <ul style="list-style-type: none"> - 9.3 mile rail corridor with double track and OCS configuration - 20 at-grade crossings and 11 grade separation structures - 11 light rail stations with 3 parking structures and 1 parking lot - New vehicle storage yard with a maintenance and administrative facility » Blue Line Capacity Expansion (BLCE) Project, S&S Certification Tasks (2012-2016) <ul style="list-style-type: none"> - 4-stations platform expansion to accommodate a 3-car train set » 20 CATS III LRVs Procurement, S&S Certification Tasks (2014-2017) » Charlotte Streetcar Project – Limited S&S Certification (2014-2015) <ul style="list-style-type: none"> - Trolley brake system modifications » 4 - CATS II LRV Procurement, S&S Certification tasks (2015) » CATS Maintenance of Way (MOW) Building Project, S&S Certification Tasks (2013-2015) » Poindexter Grade Crossing Project, S&S Certification Tasks (2011-2013) » North Davidson Bus Maintenance Facility Renovation Project, S&S Certification (2010-2014) » LRV Storage Yard Lighting Enhancement Project, S&S Certification Tasks (2012) » CATS LRV Maintenance Facility Mezzanine Addition Project, S&S Certification (2011-2012) » South Corridor Light Rail Project (SCLRP), Construction S&S Certification Tasks (2005-2008) <ul style="list-style-type: none"> - 9.6 mile dual track, OCS system, and 15 rail stations with 7 park and ride locations - 16 CATS I LRVs procurement - South Boulevard Light Rail Facility (maintenance, rail operations and rail storage yard)
3.	ConnDOT Connecticut	<ul style="list-style-type: none"> » New Britain to Hartford Busway (NBHB), BRT Project, design only S&S Certification Tasks (2009-2013) <ul style="list-style-type: none"> - 9.5 Miles with 10 stations, dedicated bus lanes, with major bus transfer terminal » Haven Rail Yard Project – Limited S&S Certification Tasks (2009)
4.	CTA Chicago, IL	<ul style="list-style-type: none"> » Red Purple Modernization Phase I Projects, Design S&S Certification Tasks (2015-2016) <ul style="list-style-type: none"> - Lawrence to Bryn Mawr Modernization Project (4 Stations) - Red-Purple Bypass Project – elevated fly-over - Corridor Signal Improvements and Advanced Systems Work (ASW) Projects » 95th St Station Improvement Project, Design S&S Certification Tasks (2014-2016) » Wilson Station Renovation Projects, Design S&S Certification Tasks (2014-2016)
5.	DCS	<ul style="list-style-type: none"> » DC Streetcar Project, S&S Certification Tasks (Certification Rescue Mission) (2015-2016)

K & J Projects Summary – Active and Past

K & J Projects Summary – Active and Past		
Agency	Safety, Security and Emergency Management Related Projects	
Washington DC		
6. GCRTA Cleveland, OH	<ul style="list-style-type: none"> » Brookpark Rail Shop & Yard Project, Limited S&S Certification (2019) <ul style="list-style-type: none"> - Mothball maintenance facility preparation to re-open facility » City Tower Tracks 7 and 8 replacement Project, S&S Certification Tasks (2017) » Station Reconstruction Phase II Projects – S&S Certification Tasks (2015-2019) <ul style="list-style-type: none"> - Replaced existing stations - E. 116th Truck Line Station (2019) - E. 34th Street Joint Territory Station (2018) - Lee-Shaker Station (Green Line) (2018) - Warrensville-Shaker Station (Green Line) (2017) » Station Reconstruction Phase I Projects, S&S Certification tasks (2010-2015) <ul style="list-style-type: none"> - Replaced existing stations - Brookpark Station Certification (2016) - Lee Van Aken Station Certification (2016) - Little Italy University Circle Station Certification (2015) - University Circle Station Certification (2014) - Woodhill Station Certification (2013) - East 55th St. Station, Construction Certification (2011) - Puritas Station, Construction Certification (2011) » Euclid Corridor Transportation Project (ECTP) BRT S&S Certification (2003-2008) <ul style="list-style-type: none"> - 20 Rapid Transit Vehicles (RTV) articulated low-floor vehicles – hybrid - 10 Miles of semi dedicated bus lanes w/33 stations & 104 up-scaled bus stops - Hayden Garage and Central Bus Maintenance Facility Modification 	
7. HARTLINE Tampa FL	<ul style="list-style-type: none"> » Tampa Streetcar Project, Limited S&S Certification Tasks (2014) » HART BRT Project, S&S Certification Tasks (2010-2012) 	
8. JTA Jacksonville FL	<ul style="list-style-type: none"> » BRT Extension Project, S&S Certification Tasks (2015-2020) <ul style="list-style-type: none"> - First Coast Flyer – 57 miles of BRT service - Golfair BRT Station Project (2020) - Avenues Walk BRT Segment and Park and Ride Project (2020) - Bowden Road BRT Station Project (2020) - East Corridor BRT Project (2019) - Gateway Station Project (2018) - Southeast Corridor BRT Project (2017) - Armsdale Park and Ride Lot Project (2017) - Downtown Corridor BRT Route (2016) - North Corridor BRT Route (2016) 	
9. LYNX Orlando	<ul style="list-style-type: none"> » Parramore BRT Project, S&S Certification Tasks (2017) » Downtown BRT Project, S&S Certification Tasks (2015) » East / West BRT Project, S&S Certification Tasks (2014) <p>All three BRT lines serves 11 miles of downtown Orlando, FL</p>	
10. MATA Memphis, TN	<ul style="list-style-type: none"> » Pinch District Pedestrian Bridge Project, Limited S&S Certification Tasks (2020) <ul style="list-style-type: none"> - Bus drop off point, pedestrian bridge over rail right-of-way » BRT Project, Limited S&S Certification Tasks, (2019) 	
11. METRO Houston, TX	<ul style="list-style-type: none"> » HRT Light Rail Expansion Project, S&S Certification Tasks (2010-2015) <ul style="list-style-type: none"> - North, Southeast, East, and Downtown Rail Corridors – 17.3 miles with 24 stations - Service and Inspection (S&I) maintenance facility and vehicle storage yard - ROC maintenance facility and rail yard expansion project with additional storage tracks 	
12. MCAT Manatee County, FL	<ul style="list-style-type: none"> » Manatee County Transit Fleet Facility Project - Limited S&S Certification Tasks (2014-1015) <ul style="list-style-type: none"> - New facility, bus wash, Admin and operation staff, maintenance bays, and fueling capability 	

K & J Projects Summary – Active and Past

	Agency	Safety, Security and Emergency Management Related Projects
13.	MTA New York LIRR	» East Side Access (ESA) Project, Limited S&S Certification Tasks (2003-2006)
14.	MTA Baltimore, MD	<ul style="list-style-type: none"> » Old Court Maintenance Facility Project, S&S Certification Tasks (2007) » Light Rail Double Track Project, S&S Certification Tasks (2006) » Cromwell Light Rail Maintenance Facility Project, S&S Certification Tasks (2005) » Metro Maintenance of Way and the Rehabilitation of the Baltimore Northwest Rail Yard Project, S&S Certification audit/review (2001-2002)
15.	RGRTA Rochester, NY	<ul style="list-style-type: none"> » Renaissance Square Project, Bus Terminal, Limited S&S Certification Tasks (2009-2010) <ul style="list-style-type: none"> - New consolidated downtown enclosed bus terminal with 28 bus bays
16.	RTD Denver, CO	<ul style="list-style-type: none"> » Broomfield / Sheridan Stations Elevator Projects, Design S&S Certification Tasks (2018) <ul style="list-style-type: none"> - Serving an existing BRT alignment, adding elevators to existing pedestrian bridges » Civic Center Bus Station Renovation Project, S&S Certification Tasks (2015-2017) <ul style="list-style-type: none"> - Access improvements, terminal modernization, and bus turn around improvements
17.	SoundTransit Seattle, WA	<ul style="list-style-type: none"> » Tacoma Trestle Project, , Limited S&S Certification Tasks (2015) <ul style="list-style-type: none"> - Replace a wooden trestle bridge and station expansion
18.	TriMet Portland, OR	<ul style="list-style-type: none"> » Portland Milwaukie Light Rail Project – Limited S&S Certification Tasks (2010-2012) <ul style="list-style-type: none"> - 7.3 miles of double track with 10 stations and 675 parking spaces - Exclusive transit way only bridge across the Willamette river for light rail, bus, trolley, pedestrian walkways, and bicycle access
19.	VEOLIA Houston TX	» Support of Houston’s GO-METRO-Rail Projects, Limited S&S Certification Operational Tasks (2013)
20.	VRE Fairfax, VA	<ul style="list-style-type: none"> » Lifecycle Overall and Upgrade (LOU) Crossroads Yard Expansion Project, Limited Design S&S Certification Tasks (2018) <ul style="list-style-type: none"> - Maintenance facility expansion with additional storage tracks » Broad Run Project, Limited Design S&S Certification Tasks (2018) <ul style="list-style-type: none"> - Broad Run station relocation, an additional parking lot and pedestrian bridge - Rail yard reconfiguration with additional track » Manassas Station Garage Project, Limited Design S&S Certification Tasks (2018) <ul style="list-style-type: none"> - 4 deck parking garage with pedestrian bridge to station » Spotsylvania Station Project – Limited S&S Certification Tasks (2016) <ul style="list-style-type: none"> - Station platform, service facility, and parking lot
21.	WMATA Washington DC	<ul style="list-style-type: none"> » 7K Series Rail Car Procurement – 748 cars, S&S Certification Tasks (2011-2020) » Andrews Federal Center Bus Garage Project, S&S Certification Tasks (2015-2017) <ul style="list-style-type: none"> - New maintenance facility » Silver Spring Transit Center Project, S&S Certification (2014-2015) » Dulles Phase I Project – Certification (2011-2014) <ul style="list-style-type: none"> - 11.6 Miles – Heavy rail system with 5 new stations - Improvements to an existing WMATA S&I yard



The Greater Cleveland
Regional Transit Authority

1240 West 6th Street
Cleveland, Ohio 44113-1302
Phone: 216-566-5100
rideRTA.com

July 24, 2017

Terry Angle, AIA
Vice President
HWH Architects Engineers Planners, Inc.
1300 East Ninth Street, Suite 900
Cleveland, Ohio 44114

To Whom It May Concern:

HWH Architects Engineers Planners, Inc. (HWH) was the Architectural/ Engineering Consultant for the Greater Cleveland Regional Transit Authority's (GCRTA) Lee-Van Aken Station Reconstruction Project.

The Lee-Van Aken Station project was a \$5.5 million dollar reconstruction of a GCRTA light rail Blue Line train station located within the City of Shaker Heights. The project consisted of the construction of two new elevator towers, covered stairways, ADA compliant platforms and information and security infrastructures.

HWH provided the GCRTA with a high quality set of construction documents which met the goals of the authority. The design brought the station into ADA compliance, was constructed of durable easy to maintain materials and minimized the disruption to GCRTA service. The documents produced by HWH were provided in a timely manner and within the project's budget.

For further details on this project please feel free to contact me at (216) 356-3270 or btemming@gcrt.org.

Sincerely,

A handwritten signature in blue ink that reads 'BT' followed by a stylized flourish.

Brian Temming, AIA, LEED BD+C
Greater Cleveland Regional Transit Authority
Engineering Project Manager - Facilities



HALLRICH INCORPORATED

MAILING ADDRESS: PO Box 370, Kent, OH 44240
PHONE: 330/678-0684
TOLL FREE: 888/404-3900

May 10, 2019

Mr. Eric Moser
Project Manager
Ohio Department of Transportation

Dear Mr. Moser:

In my previous position as Manager of New Development for The Goodyear Tire & Rubber Company, I worked with the HWH team on various issues relating to the technical aspects of our Auto Service Centers. These included building placement, site circulation for semi-trailer access, large tire storage areas and vehicle maintenance bays.

HWH excels in delivering functional, cost-effective building designs while providing general contractors with details for accurately bidding and constructing per their plans. Furthermore, I value their expertise and work ethic to the point that I have engaged HWH's services in my current role with Hallrich Inc.

Sincerely,

Carol Klinger
Director of Retail Planning & Development



April 13, 2020

TO WHOM IT MAY CONCERN

I am writing to recommend the professional services of HWH Architects Engineers Planners of Cleveland, Ohio.

HWH has delivered services to our company for the past 15 years for projects encompassing all the various disciplines they provide including: a 20 year master expansion plan; a 10 acre land, roadway and utility development, design and construction plan; and most recently a 6 acre site design and development of a new four million dollar campus and the design of a new funeral home and new cremation center as the first construction of what will ultimately be a four or five building campus. Obviously, we have a great deal of confidence in HWH and their professional creativity and competence. We are, in fact, already in discussions with them for future projects.

I have worked with several members of the HWH team but most closely with their vice president, Craig R. Brown, who has been an integral part of all of our projects. Mr. Brown is not only highly creative but also understands how to make all of the parts of a project work together.

HWH, Mr. Brown and the entire team of professionals comes highly recommended.

If you have questions, please feel free to contact me.

Sincerely,

Daniel Applegate
President and CEO

Section 5

Technical Proposal

**General HWH Design Philosophy, Project
Issues and HWH Quality Control Summary**

- a Response to Each Task**
 - Multimodal Station**
 - Rail Platform**
- b Disclaimer**
- c Schedule**

5 Technical Proposal

General Design Philosophy

The primary goal of an intermodal transit station is to create a facility that makes it easy for pedestrians to circulate from cars to busses to trains in a way that is safe, secure, efficient, sustainable, accessible, and attractive. Riders will have to exit the trains and walk to the Station Building for rest rooms, waiting areas, some possible vending and transfer activities to change to County buses or personal vehicles. Queuing lanes for both bus and car pick-up and drop-off will be required. Adding complexity to the proposed Chestnut Street Station is the incorporation into the complex of offices for several agencies, bus storage, minimal bus maintenance, gas facilities and various employee uses such as lockers, dining, training, and minor meeting space.

Historically the train station has been at the heart of the cities and villages across the country. Now with the reemergence of rail transportation as a desirable commuter option this is again an opportunity to utilize rail and bus transportation in an intermodal facility as a focus for community activity and vitality.

Our architectural experience teaches us that the most important phase of any design project is the initial planning and conceptual stage. Project goals and scope must be clearly defined as early as possible. One of the critical aspects of developing a viable transit facility that integrates with the community it serves is to involve the citizens and stakeholders as early as possible of program and design development. While the transit authorities and design team provide funding and technical expertise, a successful project needs partnering with stakeholders and community at large. Therefore, the design philosophy includes this very important aspect. The community should feel comfortable in sharing their views on aesthetic concerns, civic uses, and their personal view of the new facility. Our HWH Team approach will be to engage the community early and to listen to what their attitudes are and make every effort to incorporate the stakeholder's discovery into the project design.

Essential to the success and efficient use of any transit facility is an easily understood wayfinding system and signage program. From both practical and economic perspective, the implementation of universal design principles and guidelines is an appropriate strategy. Also, different from accessible design, the modern transit facility should fall into a design category of universal design. User features and connections should be usable and accessible by everyone, including people with disabilities. The universal and accessible design will create a circulation system that will accommodate the entire population. Another aspect of our design philosophy will be to provide art opportunities to incorporate into the project. This could involve some integrated art into the architectural or landscape architectural design or create spaces that could accept an art program into the project over a period of time. Art features can be integrated with fencing, shelters, bike racks and lighting. This approach goes a long way in giving the station an identity and sense of place. In its best application it should enhance the architecture and reflect the community's character and history.

Our goal will be to create a facility that is unique to the Oxford community, encourages user stewardship and promotes a greater use of both the BCRTA bus system and Amtrack rail opportunities.

General Project Issues

The BCRTA Request for Proposal does list several requirements prior to describing the Tasks associated with the 4 Parts of the projects.

As previously defined in the Response to Request HWH will be the Architect Engineer of Record. We will be responsible for the entire project. HWH will provide the overall project manager to oversee the entire Team and project. We have a prime project manager and an assistant project manager. The client Team and contractors will always have someone to respond to questions.

HWH will provide the Architectural Design and Site planning. Smith Architects will provide support Architectural services. Their services will primarily be helping to develop the building design, any State Historic applications, LEED Review, Cost Benefit Analysis, and specification writing. Our design services will be supported by K&J Safety and Security. They will provide Peer Review and suggestions to assist in design decisions that will improve Safety issues based on rail stations and multimodal stations they have certified all across the country. Many Federal projects require Safety and security certifications and their involvement in the design process will augment the certification process. Resource International Inc will also provide some Peer Review from a civil engineering standpoint. Primarily they will be responsible for survey and environmental NEPA Phase one during Part 1 of the project and environmental NEPA Phase 2 during Part 2 of the project. RII will also perform geotechnical services during Part 2 unless BCRTA or the City of Oxford has already contracted for those services. This was not listed in the RFP. The final consultant on our Team is the Catalyst Consulting Group. They will be serving as an independent firm to conduct and document any stakeholder meetings and charettes. They will provide a report of any meeting they organize for the BCRTA and the City to review and evaluate.

All of these groups will report directly to HWH and out Project manager. Our project managers are registered professional and have extensive experience with transit and large-scale projects, including Cincinnati projects. They will provide the required progress reports quality control measures and schedules for both engineering and construction. In addition to those reports requested HWH will submit several additional reports that we provide as standard submissions such as Consultant Trip Review. Prior to execution of a contract HWH will be able to review the format of all our expected reports / submissions for client evaluation.

Other miscellaneous items for to be completed as part of our project management include

- schedule
- schedule Recovery Plan
- risk assessment and analysis
- monthly invoices (with required reports) attendance
- at all meetings
- audits upon BCRTA requests

HWH has a very extensive In-House Quality Control System set up that we use for all of our projects. We have included a separate page in this submission to outline our procedures.

HWH Quality Control:

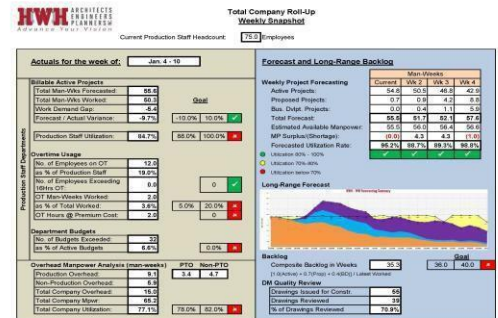
Our firm has a history within the Cleveland Design, Architectural and Engineering Community of producing high quality plans, drawings and specifications which provide a level of comfort when constructing a project. We usually bring projects in to bidding on time and complete construction on budget.

Some of our competitors call themselves "Nuts and Bolts" Architectural Firms. The translation for that is "average or cheap." Some area firms say they offer Multi Discipline services and they actually have only added several engineers in the last few years. HWH has been providing high quality engineering for all construction disciplines under one roof for over 100 years. The proof of this is that we have kept Goodyear and General Electric, both fortune 500 companies as clients for 75 and 60 years, respectively.

Here is what we are doing now:

HWH has instituted a project tracking program 10 years ago that produces a graph that indicates a variety of project metrics. These are done on a department by department basis as well as Companywide. The results are updated each week.

Early in the week Project Managers project the manpower that they will need on any given project. The manpower will be extended out for the duration of the project with highlights at key project intervals. The projections will be for the staff needed for every department assigned to the project.



Each department manager will review the anticipated manpower requested by each project manager and compare the workload to his staff and the expertise of each staff member. The reviews are completed by Thursday night end of business. On Friday, the department managers and project managers meet to discuss the coming weeks scheduled work. If needed some negotiations take place to ensure that each client is provided the correct amount of attention to their individual projects.

Monday morning all department managers and HWH executives meet to review the past week. We track the number of employees that were actively working on production, how many were on overhead, overtime, non-production staff usage and how successful we have been not exceeding our budgets. We project long term business backlog and the number of staff we may need to complete our projected work. Our backlog is set to reflect actual signed contracts. Proposal that have been sent out and general marketing have a lessor factor weighing on the backlog, but we do not get surprised often with more or less work then we anticipate.

BCRTA Multimodal Technical Response

PART 1- Preliminary Architectural Concept Design/Engineering

(10% Concept/Schematic)

Task 1 - Program Study

Our initial project approach will be to evaluate all of the required services, administrative tasks, site constraints and transit specific issues in order to determine any economies of space or shared functionality focusing on eliminating any redundancies. Our Team Members have experience in transit facilities, functional operations of public waiting areas, lobbies, garages, storage yards, fuel dispensing locations, lockers, staff areas and maintenance areas. Our Team will be a valuable tool in determining the elements to be incorporated into a creative and efficient multimodal design that will function for the Butler County Reginal Transit Authority. This Task will involve HWH, Smith, Resource International, Catalyst and K & J Safety and Security. The Catalyst Consulting Group, our community facilitators

* Design Team Field Visit

HWH, Smith Architects and RII will conduct initial site field visit to meet with local BCRTA and City staff. The following items will be reviewed or conducted:

- a) Meet with BCRTA and City Staff to identify Wish List
- b) List spatial requirements for each phase of multimodal center and rail platform
- c) HWH to scan site as supplement to Survey (*The HWH laser scan will be used to document existing conditions and supplement any photographs of existing conditions. This will be used prior to an actual survey being completed. HWH will be prepared to scan a second site for the Site Alternative Study*)
- d) Establish budget range for Multimodal Center and Rail Platform
- e) Identify limits of survey for current proposed site location



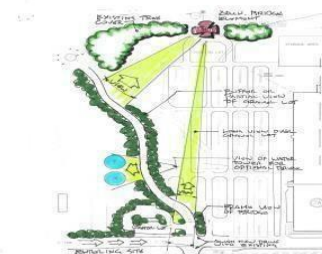
HWH Laser Scan of Cincinnati Site

Provide Survey - RII

ALTA Survey (*Topo, utilities, property lines, easements, structures, obstructions etc*)
GIS Maps

* Development Concept plans for Site and Buildings

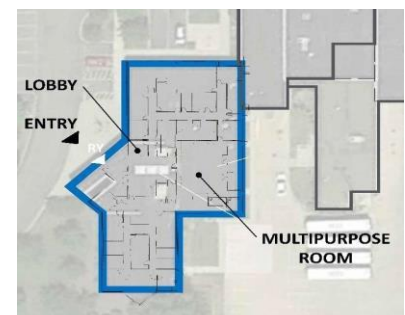
- a) Provide a Site Analysis to indicate options, restraints, or other physical design factors.
- b) Provide spatial arrangement for each space in a to scale concept plan
Provide SF cost opinion for building, site, and rail platform. This will be based on current project costs where possible. It will not consider any materials, material delivery schedules or area construction activity.
The Concept plans will be used for part of the Charette.



Site Analysis



Site Concept Plan



Building Spatial Arrangement Plan

*** Design Charrette**

The Catalyst Consulting Group will organize and conduct the immersive onsite design charrette. They will be assisted by **HWH, Smith and RII**. **K&J** will be included if within the consultant's budget.

Catalyst will:

- a) Send out Stakeholders invitations (*attendees will need to be based on the current State of Ohio guidelines for group meetings during the corona virus pandemic at the time of the charrette*)
- b) Set up room layout
- c) Conduct the actual Charette (*Catalyst will moderate the meeting and provide graphic sketches to document ideas*)
This will be moderated by Leslie Yerkes with Johnnie Byrne providing graphics. Tim Olland of HWH, our lead designer will also provide some graphic images.
- d) Document the meeting on white board if available
- d) Provide Report documenting the meeting results



Catalyst Conducted Charrette

e) Conduct Review Meeting of the Report



HWH Large Meeting Room for 40-50



HWH Smaller Conference for 8 -10

This review meeting will be conducted by The Catalyst Consulting Group. Currently this is planned to be remote TEAM or Zoom type meeting. The offices of HWH will host the meeting in our conference center so, we will be able to utilize our white boards, computer image projection and pdf creation of any images projected on the white board screen.

City to Provide during this Task:

- a) Alternative site for HWH to review during the first Site Visit by HWH and Smith
- b) List and addresses of appropriate stakeholders for the Charrette
- c) Meeting room location for the Charrette

Task 2 - Site Selection Alternative Study (Optional if Needed)

HWH and Smith will review other site locations if needed. We will evaluate a second site which has been vetted by the City and BCRTA. In order to evaluate the second site, the HWH Team will:

- a) Develop a Matrix utilizing appropriate criteria for Comparison
- b) Review Matrix with client prior to any publishing or release of the comparison. Add in other evaluation categories per BCRTA and City.
- c) Overlay concept drawings on second site for comparison. Adjustments will be made to fit the concept to the second site
- d) HWH Team will use the scan of the second site as reference as needed

(A Third site will be reviewed if requested however a scope of work will need to be determined to fit or expand the consultant's budget)

- e) **Both RII and d K & J** will conduct a PEER Review of the Site Selection Alternatives

* **Survey - Resource International Inc.** will provide an ALTA Survey once a site has been selected. This will include but not be limited to:

- a) Property Lines and Boundaries
- b) easements
- c) Topography
- d) underground utilities and know obstructions
- d) Above ground obstructions

(The HWH scan will be able to cross reference and accurately measure above ground items and obstructions if the selected site has been scanned)

Task 3 - Preliminary Environmental Study

Resource International Inc. will conduct provide a Phase 1 Environmental Site Assessment of the selected Site. This Study will:

- a) Meet EPA Guidelines
- b) Identify which if any buildings may have hazardous materials
- c) if any underground items may impact or even deem the site unbuildable
- d) provide an All Clear to proceed with further Real Estate acquisitions

Task 4 - Concept Drawings

HWH, Smith, K&J

The HWH Team will evaluate and document all project components and identify end-user requirements. We will provide the following:

Conceptual Color Rendered Site Plan - HWH

Conceptual Color Rendered Building Plan

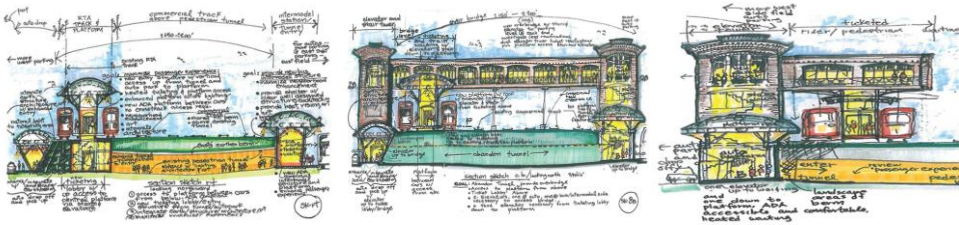
Conceptual Code Review - Smith

Conceptual Cost Estimate - RII (using square footage costs)

Conceptual 3D Rendering - HWH (for Community Input)

Safety Review - K&J

Project Summary - HWH



Conceptual Sections of HWH Multimodal Station



Concept 3D of HWH Facility

Part 2- Preliminary Architectural Concept Design / Engineering (30%)

Task 1 - Preliminary Design Documents

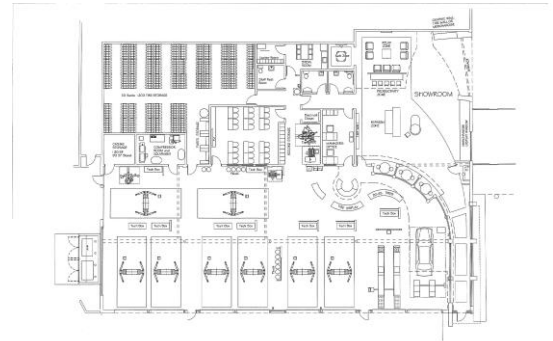
Design Development Drawing Package

HWH and Smith will provide the following as Design Development Package:

- Civil Plans
- Architectural Plans
- Structural Plans
- HVAC Plans
- HVAC Load Calculations
- Plumbing Plans
- Electrical Plans
- Draft Specifications
- Hazardous Material Information

i Conceptual Design Criteria based on Part 1 - HWH & Smith

Below are samples of HWH Preliminary Plans



ii Functional Requirements and spatial arrangements - HWH and Smith

(See Design Development Package)

iii Permit Requirement - HWH and Smith

(See Design Development Package but HWH Team will also contact all known permit agencies to determine exact needs)

iv LEED Review - HWH and Smith

Team and check project discipline consistencies to enhance Quality Control

v Identify Off Site Utility and other Services or Street Improvement - HWH & RII

(Included as part of Civil Plans in Design Development Package)

vi Identify Required Clearances, Permit and Agency Authorization - HWH , and J & RII

vii Preliminary Project Cost Estimate - HWH & RII

Other Items Often Provided by HWH during Design Development:

- * Design Development Building Performance Summary - HWH
- * Hazardous Material Information (to be updated after Task 2)

Task 2 - NEPA Compliance Process - RII

This Task will be performed by Resource International. They will prepare their documents in compliance with the National Environmental Policy Act of 1969. They will provide a thorough review of the site, surrounding community and will prepare documents as needed to move forward with property acquisition.

The list below is essentially as defined in the RFQ. Until we actually look at the site and start to compile findings it is difficult to outline anything different than was published.

- i Right of Way
- ii Zoning and Land Use
- iii Air Quality
- iv Noise Levels
- v Traffic
- vi Community / Neighborhood & Social Impacts, Justice and Title VI Issues
- vii Water Quality and Resources
- viii Flood Hazard Potential
- ix Archeological and Historic Issues
- x Proposed Facility Impacts on Neighborhood
- xi Wetlands
- xii Endangered Species
- xiii Geotechnical Investigation

RII with HWH assistance will prepare any required documentation for categorical exclusions, a Finding of no Significant Impact and shall proceed to documents necessary for construction.

Task 3 - Interagency Coordination / Public Process - HWH

The HWH Team will contact and if possible, meet with all agencies that may have some say or jurisdiction over the project. Our Team will prepare Project Drawings required to explain the proposed work to the public and interested parties. The HWH Team will assist the BCRTA and The City of Oxford in setting up required meetings and contacting organizations.

2 interior renderings and 2 exterior renderings will be prepared as part of this Task. They will be adjusted for Task 2 of Final Design if needed.

Part 3 - Final Design (100% Construction Documents)

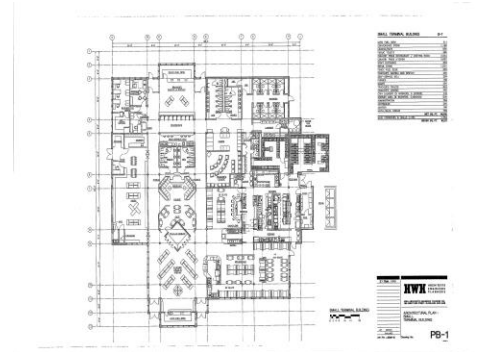
Task 1 - Value Engineering

The Catalyst Consulting Group led by Leslie Yerkes with Tim Olland of HWH and Bonnie Smith of Smith Architects as Graphic Facilitators will conduct the Value Engineering Charette. This will be a more technical exercise than the charette in Part 1. We will include all of our lead discipline managers in this meeting as well as technical staff from both the City and BCRTA.

Task 2 - 30% Construction Bid Documentation (Review Submission)

*Construction Document Package - HWH

- Title Sheet
- Site / Civil Plans
- Landscape Architectural Plans
- Demolition Plans
- Architectural Plans
- Structural Plans
- HVAC Plans
- Plumbing Plans
- Electrical Plans
- Technical Specifications CSI Book Format
- Draft Project Manual
- * **Support Material**
- 30% Construction Document Cost Estimate - RII and HWH
- Construction Document Building Performance Summary -HWH



Final Presentation Design Material - HWH

- 2 Site 3D Renderings
- 2 Building Exterior 3D Views
- Interior Lobby / Passenger Waiting Area
- Rendered Site Plan
- 4 Interior Building Plan

Task 3 - 60% Architectural and Engineering Design (Review Submission)

All items listed in the 30% set will be updated in the 60% Review. The following additional information or plans will be included as part of 60% Set:

- 2 Staging Plans for contractors use
- 5 Electrical Systems
- 8 Mechanical Systems
- 10 Signage Plans
- 11 Various engineering Calculations
- 12 60% Cost Estimate - RII and HWH
- 13 Preliminary Construction Schedule

Task 4 - 90% and 100% Complete Architectural

All drawings and calculations will be considered Complete at 90% allowing for some minor adjustments through permit review. Drawings will be stamped and signed by appropriate professional and sub consultants who prepare their own drawing will also stamp and sign.

Final Construction Schedule - RII and HWH

Task 5 - Interagency Coordination

HWH shall submit plans for review with permit agencies throughout the design process. HWH shall assist the City and BCRTA with meetings, plan reviews as has been outlined throughout the submission.

HWH will conform where possible to the items defined in this Task

Part 4 - Construction Phase Services

With Commissioning and Project Close-Out Warranty

Task 1- -Bidding and Award Tasks

- i Assist in All Bidding Activities Preparation of Bid Documents
Attendance in:
 - Pre-Bid Meetings
 - Assist City in Answering Bidder's Questions
 - Assist in Any Addenda
 - Assist in Tabulating and Analyzing Bids
 - Bid Documents
- ii Attend Bid Opening
 - Assist in Reviewing and evaluating Bids
 - Notify Client if any bidder is non-compliant or deemed Not Qualified



Task 2 - Construction Phase Services

- i Attend Pre-Construction Meeting
 - Field Observation and Inspection-
 - Min 2 per week, 2 hrs. each during intense construction
 - Min 1 per week during moderate construction
- ii Respond to Contractor RFI's
- iii Participate in Quality Control and Field Clarification
- iv Review and Prepare Contractor Change Orders
- v Review and Approve All Shop Drawings



Task 3 - Project Close Outs

- i Provide Services for Complete Commissioning of all Systems and Construction
- ii Perform Site Inspections and Review Contractor's Punch List
- iii Participate in Final Inspection and Issue Certificate of Substantial Completion



Task 4 - Warranty (Post Completion Tasks)

- i Provide As-Builts (HWH Laser Scan)
 - Modify Drawings
- ii Review Operations, Maintenance and Warranty Documentation

Assist City in Resolving All Post-Occupancy Issues
Participate in Warranty / Guarantee Inspections at Conclusion of Warranty Period if needed



HWH Laser Scan to create As-Builts

City of Oxford Rail Platform Design

General Items

HWH has experience with both light rail and heavy rail engineering. We have done both type rails for GCRTA and we have added spur lines for our industrial clients (see *GE Turntable Project Sheet and Crystal Nexus in Project Experience Section*). This work is done by our inhouse engineers. K&J have recently had an On-Call Contract for Amtrack.

HWH will comply with the Rail Requirements however it is our intention at this point to have Similar Tasks to be completed concurrently with BCRTA Scope to save consults fee and travel costs unless Zoom or TEAM meeting programs may be utilized.

HWH Team will attend two meetings with Amtrack Planning, provide a topographic survey of the site, provide GIS Maps and Data as part of Survey, provide rendered plans or 3d sketches of platform design for Public use, all engineering to meet Federal Grant Requirements, provide a NEPA Phase 1 report (*Phase 2 NEPA will be included if needed as part of Part 2 of BCRTA Scope*) if project moves forward and HWH and Smith Architects will provide a Cost Benefit Analysis. Also, to be provided will be Construction cost estimate, support explanations as needed to explain engineering decisions and construction management services.

Funding assistance will be provided depending on specific knowledge of HWH or our Team, specifically K&J and Resource International.

HWH has adjusted these 12 Rail Engineering requirements to correspond with the BCRTA Project Parts and Tasks.

Part 1 Preliminary Concept Design

Survey Items (*Items 1, 4 and 5 are similar and per Addendum #2 these are to be combined as one line item. Items 2 and 3 have been included as part of initial Surveyor's work*).

1 Topographic and Property Survey

HWH Team will provide a topographic survey. This is intended to meet ODOT Specifications and will be similar to an ALTA Survey. This will include grades elevations, property lines, easements, above and below ground utilities, drainage swales, storm water manhole inverts, poles, traffic signal devices, fences, guardrails, vegetation (*with caliper sizes*) and other above ground site elements. Railroad elements included but not limited to will include centerline of rails, signal poles, rail lubricator and another miscellaneous railroad components. This portion of survey will be approximately 1 acre (*This may vary slightly based on the up to 6 parcels indicated in ITEM 5*).

Provide Property lines and easements meeting OAC 4733 & ORC 4733.

The Project Survey Limits may include up to 6 parcels. Surveyor to notify owners about survey work 48 hours ahead of work.

4 Topography (*This is a repeat and is included above*)

5 Property Survey (*This is repeat item and is included above*)

2 Project Control

Control points to be used as Project Reference Point for construction layout and grade elevations. These to be set up as part of the surveyors' work. These will be off of CSX Right of Way.

3 Railroad Coordination

This is a survey to be provided partially on Railroad property. Work on Tracks or within Rail ROW are to be considered a reimbursable. Appropriate flaggers, rail rated surveyors, carrying Railroad Insurance for active tracks will be required. Surveyors to coordinate work with CSX for possible track shut down and or notifications.

6 Utilities

This requirement is for Ohio Utility Protection Inspection Service, OUPS to review the site and physically mark the location of all underground utilities. This is to be done prior to the Survey.

Conceptual Design

HWH and Smith Architects with PEER Review from K&J and RII will provide concept design for the platform, shelter, and pedestrian walkway. A second walkway will be studied. This will form the basis for the Preliminary Design Phase.

9 NEPA Phase 1

This will be performed during Part 1 work as it will be done for Part 1 for the Multimodal Station. It will be by RII

Part 2- Preliminary Design Documents (30%)

NEPA Phase 2

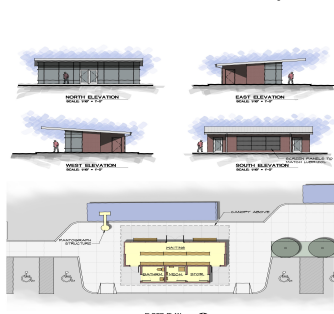
If required, this will be performed during Part 2 work (Depending on the extent of work HWH may need to engage a second Environmental Firm to complete this work. We do have a qualified firm from Cleveland who is also ODOT DBE)

7 Preliminary Engineering

HWH will perform generally industry accepted standards for 30% submission. The following scope items will be completed during 30% work to meet the requirements as defined in the scope.

Design Items to include:

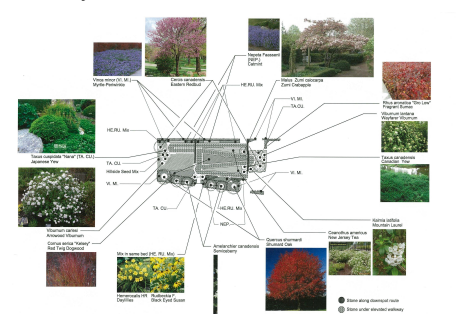
- i Platform- Size to be determined during Part 1 Concept Design. It will be further defined during Preliminary Engineering. It will be low level, 8" high to surface and will slope away from track for ADA & drainage. It will meet all ADA requirements. This will be by HWH and K&J.
- ii Shelter - The size and location of this will also be determined during Concept Design and will be defined during 30% Preliminary Engineering. This may be prefabricated or on-site construction, but it will be non-heated, non-air conditioned. According to the pre-proposal meeting it is not to have rest rooms but it should provide some protection from the elements. This will be by HWH and Smith.



Simple Transportation Shelter

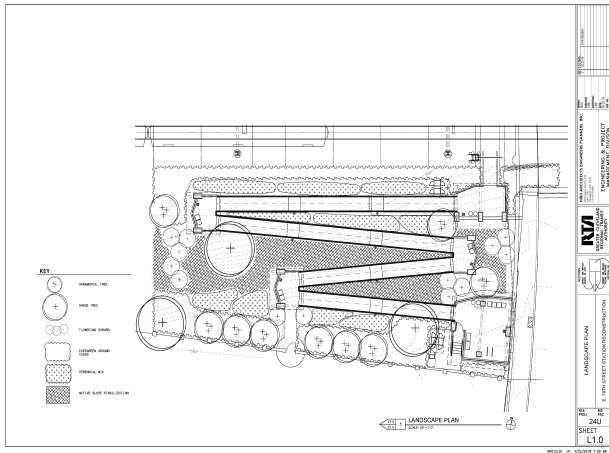


Pedestrian Walkways along Rail and Bus Routes



Landscaping for Transportation Site

- iii Geotechnical Investigations - This will meet the requirement and standards of the BCRTA Geotechnical work but work on the rail will have to meet the same specifications and Insurance of Item 3 Railroad coordination in Part 1.
- iv Pedestrian Access - HWH has extensive experience with the design and engineering of streetscapes, walkways, and pedestrian spaces. They will provide Landscape Architecture and Civil Engineering. Only existing crossing will be considered. HWH will verify that they meet ADA Guidelines.
- v Signage - HWH and Smith will prepare a signage package to include Amtrack Standards (These are similar to GCRTA Standards), Platform Identification, required City signage, Vehicular Wayfinding, Pedestrian Wayfinding and ADA Parking. K&J Safety and Security will review signage to comply with Industry Safety Standards.
- vi Electrical / Lighting - HWH has provided Electrical Engineering for GCRTA Stations, substations, and many of our clients. This will be performed in house.
- vii Communications Data - HWH Electrical Engineers have provided both communications and developed Security Rooms for many clients. HWH recently prepared preliminary plans for a complete security building at the GE Rail Transportation campus in Erie Pa. and the PNC Operations Center in Cincinnati.
- viii Landscaping - HWH will provide landscape design. Recent Rail projects include GCRTA East 79th Street, GCRTA Lee Van Aken, GCRTA Shaker Warrensville Station and GE Erie Transportation Center



Preliminary Station Ramp and ADA Access Design



GCRTA ADA Track Crossing

Part 3- Final Design - 100% Submission (Basis of Design, BOD)

8 Basis of Design Report (100%)

HWH will prepare a full set of constructions documents and assist in permit agency review, coordination, and permit approval. Drawings will verify modifications to track, all engineering and architectural disciplines, Assumptions will be documented for review and verifications that all codes are compliant.

10 Cost Benefit Analysis

HWH and Smith Architects will perform Cost Benefit Analysis at 60% through the BOD to verify that project meets the budget. K&J and RII will assist will constructability issues and cost estimating.

Part 4- Construction Management Services

11 Construction Management of Rail Platform

Unless negotiated out of the project scope HWH and RII will perform all standard CM tasks including preparation of bid documents, bid analysis, pre-bid meetings, pre-construction meetings, weekly job meetings, Punch List activities and Warranty assistance.



HWH Observing Construction of Lee Van Aken Station & Track Adjustment

Disclaimer

HWH has included the following disclaimers as they relate to the Chestnut Street Multimodal Facility and Shared Services Project:

1 Pricing Proposal - Section 8 of the RFP on page 13 of 61 states that "Pricing WILL NOT be evaluated as part of the award for this contract. This contract will be awarded based on qualifications consistent with 40 U.S.C. Section 1102." The addendums have not altered this RFP Item.

HWH has based our Pricing on what we and our consultants feel is the best service for this project. There are several areas where we could negotiate if required and we use the Pricing as a starting Point.

2 Availability of Staff - HWH has included staff who in some form or another have experience with transit projects, large scale projects or Cincinnati area projects. We have indicated on the Resumes who we believe at this time is available to serve on the BCRTA /City of Oxford Team. Obviously, depending on when this project is ready to be contracted with may have to use different staff from the current slated engineers and architects. At time of proposal award, we will notify the BCRTA / City Team of any changes.

3 On-Site Meetings - During this time of the Covid Virus and State Mandated business slowdowns and closures HWH is complying with only a skeletal staff in our office on any given day. We have department manager's, project manager's and client meetings via Zoom or TEAM Meeting programs. Depending on the severity of the pandemic, adjustments to State Guidelines and general health concerns for both our Team and your Team we may need to evaluate On-Site Meetings.

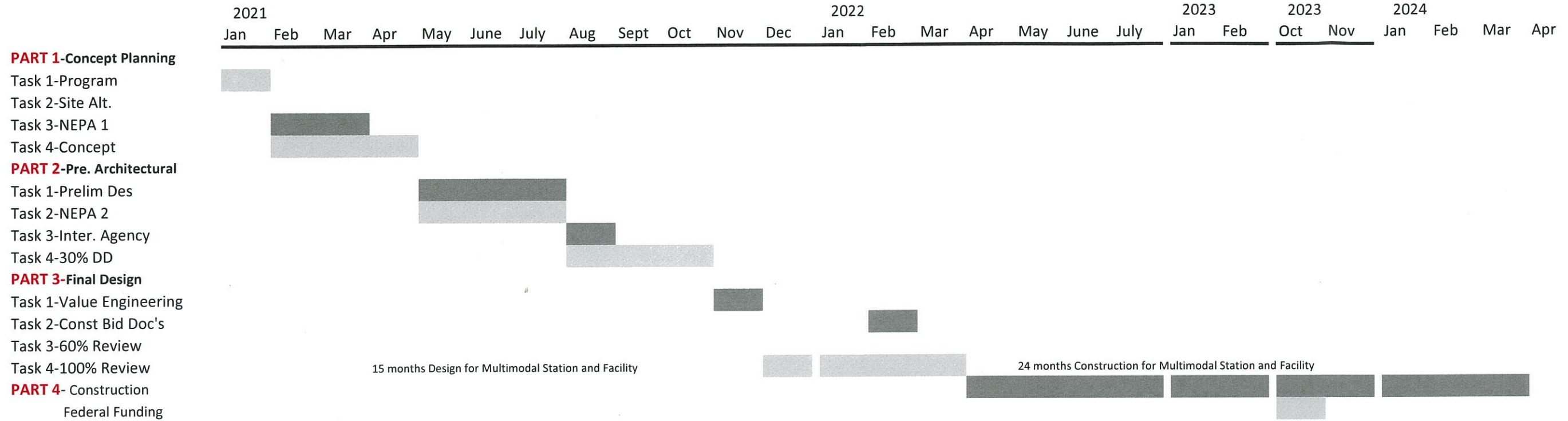
4 Consultants - Depending on how the scope of this project is adjusted through cost requirements, unknown complexities or project delays we may find that we need to add or remove consultants. Any substitutions or additions to our Team will be reviewed with the BCRTA / City Team first.

5 Disadvantaged Business Program - All of our consultants are either DBE Edge Certified with the State of Ohio or are Female Owned Enterprise's. resource International has some certifications for disciplines that we are using as well as disciplines that are not certified but we are using them anyway due to their proximity to the project site. The Catalyst Consulting Group is a female owned firm that is certified in Cleveland but not with the State. We directed them to not worry about State Certification since there is not a DBE Goal defined and our Team is intending to provide in excess of 20% DBE participation.

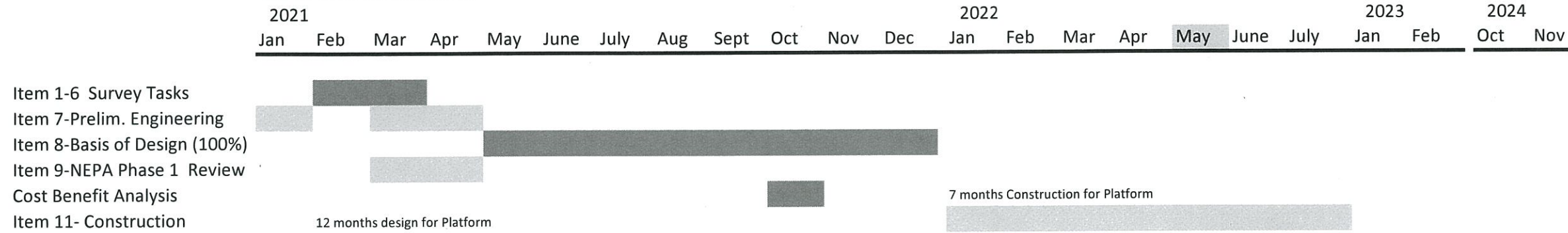
Chestnut Street Multimodal Station and Shared Services Facility & City of Oxford Passenger Rail Platform

PROJECT SCHEDULE

BCRTA Multimodal Schedule



City of Oxford Rail Platform



Section 6

Disadvantaged Business Program

See Section J, K and L for DBE Commitment Forms

- a Summary of HWH DBE Program**
- b Smith Architects Certification**
- c K&J Certifications**
- d Resource International Certifications**

6. DISADVANTAGED BUSINESS PROGRAM

HWH has been developing our Disadvantaged Business Program, better known as Disadvantaged Business Enterprise (DBE) or Minority Business Enterprise (MBE) for the last 20-25 years. For years HWH has kept records of Fair Business Hiring Practices. We have always been found to be in compliance. We regularly utilized several DBE and FBE (Female Business Enterprise) firms. We have collaborated on many projects with Smith Architects and an MBE Mechanical Engineering Firm. In the past ten (10) years HWH decided to expand our client base and submit on various government projects. These projects usually require Minority (MBE) participation to be in a range of 5% to 18% of total project participation. During that time HWH has sought out other firms to expand our DBE relationships. During that time HWH teamed with:

- 3 - Environmental Engineering Firms
- 2 - Geotechnical Engineering Firms
- 2 - Architectural Firms
- 2 - Mechanical Engineering Firms
- 1 - Signage Design Company
- 2 - Public Engagement Firms
- 1 - Electrical Engineering Firm

This increased effort to uncover DBE Firms to meet minimum minority participation requirements for government agencies has enable HWH to develop long term relationships with high quality business.

Initially we teamed with minority firms on government projects. We soon found that utilizing these firms helped us provide a better Architectural/Engineering product. Our percent of DBE participation increased our projects to 5% to 15% more than the minimum requirements. These minority partners have become so valuable to HWH that these firms have become integral to our efforts for all of our projects. We currently have used these firms for some of our industrial projects, a restaurant project and a civil project, none of which had MBE requirements. As an example of our commitment to a Disadvantaged Business Program a sample of our recent proposals and projects indicate how we exceed minimum goals.

2012	Cuyahoga Community College Auto Training Center.....	25%	38%
2012	Greater Cleveland RTA On-Call	15%	25%
2013	Greater Cleveland RTA On Call.....	18%	32% +/-
2018	Greater Cleveland RTA On Call.....	18%	34% +/-
2019	City of Cleveland On Call.....	15%	28% +/-
2020	City of Cleveland Stables.....	15%	22%

For the Butler County RTA (BCRTA) and City of Oxford Chestnut Street Project we propose to have 42% Disadvantaged Business Participation. All of our team members maintain DBE, Edge, State of Ohio, or Female Business Certifications. Our team members have the following Ohio Certifications:

Smith Architects LLC..... Ohio Certification Program - DBE

K & J Safety and Security Ohio Certification Program - DBE
 US Department of Transportation - DBE
 NAICS Codes 541611
 NAICS Codes 541690
 Veterans Business Enterprise

Resource International Inc. Ohio Department of Administrative Services
 Cert Number EDGE-3735 - Project Management Civil
 Engineers
 National Woman's Business Enterprise Certification

Certified Disadvantaged Business Enterprise

Smith Architects, LLC

AWP Vendor ID: D22475105

This certificate acknowledges that, on the date this certificate was printed, the above named firm was eligible to participate as a Disadvantaged Business Enterprise (DBE) in Ohio and was certified to perform the following types of work as a DBE:

NAICS Code	NAICS Title/Descriptor	Effective Date
236220	Commercial and Institutional Building Construction	05/23/2012
541310	Architectural Services	05/23/2012
541410	Interior Design Services	05/23/2012
541611	Administrative Management and General Management Consulting Services	05/23/2012
541990	All Other Professional, Scientific, and Technical Services	05/23/2012

To verify the above named firm's eligibility to participate as a DBE/ACDBE in Ohio and the work types in with the above named firm is currently certified, check the Ohio Unified DBE Directory at www.ohioucp.org.

Date Printed: October 09, 2020

Original Certification Date: May 23, 2012



Small & Disadvantaged Business Enterprise
**UNIFIED
CERTIFICATION
PROGRAM**



**Greater Cleveland
Regional Transit Authority**

WWW.OHIOUCP.ORG

July 15, 2020

Karen L. Tucci, CEO
K&J Safety and Security Consulting Services, Inc.
3257 Elcano Lane
Cantomment, Florida 32533

RE: Ohio Unified Certification - DBE Annual Declaration

Dear Mrs. Karen L. Tucci,

Your firm's Annual Declaration was received by Greater Cleveland Regional Transit Authority (GCRTA) of the Ohio Unified Certification Program. As a reminder, each year you will need to complete the Annual Declaration on or before your anniversary date in order to maintain your firm's eligibility as a DBE. Your firm's anniversary date is May 5, 2021.

In accordance with the Title 49, Part 26 as published in the U.S. Code of Federal Regulations, The Ohio Department of Transportation acknowledges this certification that allows your company to participate as a DBE on federally assisted projects and/or contracts. To obtain a copy of certificate, please visit the Ohio Unified DBE Directory at: <http://www.dot.state.oh.us/Divisions/ODI/SDBE/Pages/DBE-Directory.aspx>.

We look forward to working with you. If you have any questions, comments, or concerns please contact our office at 216-356-3129.

Respectfully,

Diana D. Jones

Diana D. Jones, MPA, MCA
Business Development Specialist
Greater Cleveland Regional Transit Authority (GCRTA)



U.S. Department of Transportation

Federal Transit
Administration

Federal Highway
Administration

Federal Aviation
Administration

May 5, 2016

CHIEF EXECUTIVE OFFICER

Karen L. Tucci
K&J Safety and Security Consulting Services, Inc.
3257 Elcano Lane
Cantomment, FL 32533

RE: DBE Certification

Dear Karen L. Tucci:

Congratulations! Your firm is now certified with the **Greater Cleveland Regional Transit Authority (RTA)** as a Disadvantaged Business Enterprise (DBE). This certification allows your firm to participate as a DBE on federally assisted projects and/or contracts in the State of Ohio. For more information on upcoming bidding opportunities please visit:

<http://transportation.ohio.gov/contracts/>

In order to maintain your firm's certification, you are required to inform the **Greater Cleveland Regional Transit Authority (RTA)** in writing of any material changes affecting your firm's ability to meet size standards, disadvantaged status, and ownership or control requirements within 30 days of the change occurrence. You are also required to complete an Annual Declaration that affirms no changes to the firm's circumstances which may affect its ability to qualify as a DBE. Failure to submit the Annual Declaration by the required date may result in the removal of your firm from DBE certification. This information can be submitted online at:

<http://transportation.ohio.gov/dbe/>

We welcome questions regarding the certification. You may contact the **Greater Cleveland Regional Transit Authority (RTA)** at any time. Please visit the following URL for the **Greater Cleveland Regional Transit Authority (RTA)** contact information:

<http://www.dot.state.oh.us/DBE/pages/UCP-Resources.aspx>

Respectfully,

Marleise Wicker
Tel: (216)566-5169
Greater Cleveland Regional Transit Authority (RTA)



U.S. Department of Transportation
Federal Transit Administration **Federal Highway Administration** **Federal Aviation Administration**


CERTIFIED

Disadvantaged Business Enterprise

K&J Safety and Security Consulting Services, Inc.

This certificate acknowledges that the above named firm is certified (pursuant to the U.S. Code of Federal Regulations Title 49, Part 26) by the State of Ohio UCP as a Disadvantaged Business Enterprise under the following North American Industry Classification System (NAICS) codes:

NAICS CODE	DESCRIPTION
541611	Business management consulting services
541690	Safety consulting services
541690	Security consulting services


Steven Sims, Director, Office of Business Development
Greater Cleveland Regional Transit Authority

Certificate Number: 11883
Effective Date: May 5, 2016



09/20/2020

Farah Majidzadeh
Resource International, Inc.
6350 Presidential Gateway
Columbus, OH 43231

SUBJECT: Encouraging Diversity, Growth and Equity (EDGE) Program
Certification Number: EDGE-3735
Effective Dates: 09/20/2020 through 09/20/2022

Dear Farah Majidzadeh:

As you are aware, a company desiring to participate in the State of Ohio's Encouraging Diversity, Growth and Equity program must demonstrate to this Office that the company is owned and controlled by an individual that is socially and economically disadvantaged for at least the previous one year.

After careful review of the application and supporting documentation you provided to this office, the Equal Opportunity Division of the Ohio Department of Administrative Services (DAS) has determined that Resource International, Inc. satisfactorily meets the requirements set forth in Section 123:2-16-01 of the Ohio Administrative Code as is required for participation in the program. This letter shall serve as the State's official certification to this effect.

This letter also acknowledges that Resource International, Inc. has been categorized under the procurement category for EDGE program participation.

Although the EDGE program does not require a company to demonstrate capability and/or experience with any code or classification prior to or during certification, the UNSPS code(s) listed below identify the company's stated capabilities. Please note: EOD does not validate that the company has demonstrated capability and/or experience in any of the following UNSPS code(s).

1. 80101600 Project management
2. 81101500 Civil engineering

Please note that one month prior to the expiration date of this certification, your company is required to submit a completed Recertification Affidavit form for our review relative to the company's qualifications for continuing participation in the EDGE program. Additionally, you must formally notify this division of any changes that occur within your company that effect ownership, managerial and/or operational control within thirty days of such changes occurring. Similar notification must be provided to us of any changes to the company's name, business address, telephone numbers, principal products/service or other basic contact and commercial activity information.

Failure to provide a completed Recertification Affidavit or to notify this office of such changes to your company in a timely manner may result in the revocation of your certification status.

If you need any assistance or have questions about the EDGE program, its objectives, or its operation, please contact the Business Certification and Compliance Unit at 614-466-8380.

Sincerely,

Eric M. Seabrook
Deputy Director

State EEO Coordinator

*As set forth in Section 123:2-16-01 -3 of the Ohio Administrative

Equal Opportunity Division
4200 Surface Road
Columbus, Ohio 43228

614-466-8380 | Phone
614-728-5628 | FAX
das.eod@das.ohio.gov | email: das.ohio.gov

The State of Ohio is an equal opportunity employer



WOMEN'S BUSINESS ENTERPRISE NATIONAL COUNCIL

JOIN FORCES. SUCCEED TOGETHER.

hereby grants

National Women's Business Enterprise Certification

to

Resource International, Inc.

who has successfully met WBENC's standards as a Women's Business Enterprise (WBE).
This certification affirms the business is woman-owned, operated and controlled and is valid through the date herein.

WBENC National WBE Certification was processed and validated by Women's Business Enterprise Council Ohio River Valley, a WBENC Regional Partner Organization.

Certification Granted: March 11, 2009

Expiration Date: March 11, 2021

WBENC National Certification Number: 2005112380

Authorized by Sheila Mixon, Executive Director Women's Business Enterprise Council Ohio River Valley



NAICS: 236220, 237310, 541330, 541370, 541380, 541511, 541512, 541513, 562910
UNSPSC: 80101600, 81100000, 81101703, 81141501, 81141506, 81151604, 86141703



Section 7

Attachments


- A-Summary of Proposal Requirements
- B-Price Proposal (*See Section 8*)
- C-Receipt of Addendum D-Scope Checklist
- E-Certificate of Lobbying Restrictions
- F-Government Wide Debarment and Suspension
- G-Personal Property Tax
- H-*Not Issued*
- I-*Not Issued*
- J-Disadvantaged Business Enterprise (DBE) Good Faith Efforts
- K-DBE Contractor Commitment (*Sub Consultant*)
 - Part 1-DBE Utilization
 - Part 2-DBE Participation Commitment
- L-Evidence of Contractor DBE Certification
(*See Section 6 for DBE Certification Sheets*)

ATTACHMENT A – SUMMARY OF PROPOSAL REQUIREMENTS

Failure to Submit Any of the Following Documents May Render Your Proposal Non-Responsive

Proposal Submission: Complete the following checklist indicating that the documents required for this proposal are enclosed.

- X RFP Cover Page
- X Table of Contents
- X Qualifications & Capabilities
- X References and Related Experience
- X Technical Proposal – Multimodal Station & Shared Services Facility
- X Technical Proposal – Passenger Rail Platform
- X Attachment A – SUMMARY OF PROPOSAL REQUIREMENTS (this form)
- X Attachment C – Receipt of Addenda
- X Attachment D – Scope Checklist
- X Attachment E – Certification of Lobbying Restrictions
- X Attachment F – Certification of Government-Wide Debarment
- X Attachment G – Personal Property Tax Affidavit
- X Attachment J – DBE Good Faith Efforts
- X Attachment K – DBE Contractor Commitment
- X Attachment L – Evidence of DBE Certification
- X Bureau of Worker’s Compensation Certificate
- X Employer Liability Insurance Certificate
- X Commercial General Liability Insurance Certificate
- X Commercial Auto Liability Insurance Certificate
- NA Proposer’s Warranty Information (as required)
- NA Bid Bond (as required)
- X Attachment B - Price Proposal Form (SEALED SEPARATELY)

 <hr/> <p><i>Authorized Signature</i></p>	<p>Vice President</p> <hr/> <p><i>Title</i></p>
<p>Craig R. Brown ASLA</p> <hr/> <p><i>Signature Name Printed</i></p>	<p>Vice President</p> <hr/> <p><i>Title Printed</i></p>
<p>HWH Architects Engineers Planers Inc.</p> <hr/> <p><i>Company Printed</i></p>	<p>October 16, 2020</p> <hr/> <p><i>Date</i></p>

#2020-014 Architecture and Engineering Services for the Chestnut Street Multimodal Shared Services Facility & City of Oxford Passenger Rail Platform

ATTACHMENT B – PRICE PROPOSAL FORM (BID FORM)

See Section 8 this RFP

ATTACHMENT C – RECEIPT OF ADDENDA

The undersigned acknowledges receipt of the following addenda to the Documents.

(Give number and date of each. Please submit with NA if no addendums issued)

Addendum Number **#1** Dated September 14, 2020

Addendum Number **#2** Date October 12, 2020

Addendum Number _____ Dated _____

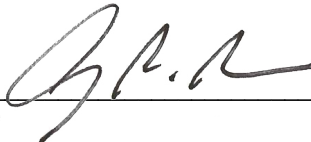
Addendum Number _____ Dated _____

Addendum Number _____ Dated _____

Addendum Number _____ Dated _____

Addendum Number _____ Dated _____

Failure to acknowledge receipt of all addenda may cause the Proposal to be considered non-responsive to this Request for Proposal, which will require rejection of the Proposal.



Signature

Vice President

Title

Butler County Regional Transit Authority

RFP 2020-014 Chestnut Fields A&E

Attachment D Scope Checklist

Proposers must complete the checklist and fill in their estimated hours in order to be considered responsive to the proposal.

Task	Submitted	Total Hours
1. Preliminary Architectural Concept Design/Engineering		
<i>a. Program Study</i>	HWH & Smith	480-500
<i>b. Site Selection Alternative Study (OPTIONAL)</i>		Not Priced
<i>c. Preliminary Environmental Study</i>	RII	90-100
<i>d. Concept Drawings</i>	HWH & Smith	550-575
<i>Survey (Not on List)</i>	RII	370-410
2. NEPA Compliance and Architectural Design/Engineering (10%-30%)	RII	
<i>a. NEPA Compliance</i>	RII or Others	200-250
<i>b. Interagency Coordination/Public Process</i>	HWH & Smith	40-50
<i>c. Architectural Design/Engineering (10%-30%)</i>	HWH & Smith	1550-1625
3. Final Architectural and Engineering Design (30%-100%)		
<i>a. Value Engineering Charette</i>	HWH, Smith & Catalyst	60-100
<i>b. Construction Bid Documentation</i>	HWH	40-50
<i>c. 60% Architectural & Engineering Design</i>	HWH & Smith	1550-1625
<i>d. 90% and 100% Architectural & Engineering Design</i>	HWH & Smith	1550-1625
<i>e. Interagency Coordination</i>	HWH & Smith	40-80
4. Bid Phase Services		
<i>a. General Contractor & Public Bid</i>	HWH & RII	45-50
<i>b. Construction Phase Services</i>	HWH & RII	550-600
<i>c. Project Close-Out</i>	HWH	40-45
<i>d. Warranty</i>	HWH	24-40

This is a Ballpark Estimate since there isn't a definitive Architectural / Engineering / Site Development Scope

City of Oxford

RFP 2020-014 Chestnut Fields Amtrak A&E

Attachment D Scope Checklist

Proposers must complete the checklist and fill in their estimated hours in order to be considered responsive to the proposal.

Task	Submitted	Total Hours
1. Topographic and Property Survey	RII	190-220
2. Project Control	RII	20-24
3. Railroad Coordination <i>Flaggers and Appropriate Insurance Included</i>		40-60
4. Topographic Survey		<i>Part of Item 1</i>
5. Property Survey		<i>Part of Item 1</i>
6. Utilities <i>Identification through OUPS</i>		<i>Part of Item 1</i>
Concept	HWH & Smith	525-575
7. Preliminary Engineering (30%)		
<i>a. Platform, Shelter, and Design, Pedestrian Access, Signage, Electrical/Lighting, Communications/Data, and Landscaping</i>	HWH & Smith	525-575
Geotechnical Investigation	RII	35-50
8. Basis of Design (BOD) Report (100% Design)	HWH & Smith	1400-1600
9. NEPA Review Phase 1	RII	90-100
10. Benefit Cost Analysis (BCA)	HWH & Smith	35-50
11. Construction Management of Rail Platform		
<i>a. Bidding, contracting, and construction management</i>	HWH & RII	550-580

This is a Ballpark Estimate since there isn't a definitive Architectural / Engineering / Site Development Scope

ATTACHMENT E – CERTIFICATION OF LOBBYING RESTRICTIONS

The undersigned certifies, to the best of his or her knowledge and belief, that:

1. No Federal appropriated funds have been paid or will be paid, by or on behalf of the undersigned, to any person for influencing or attempting to influence an officer or employee of an agency, a Member of Congress, an officer or employee of Congress, or an employee of a Member of Congress in connection with the awarding of any Federal contract, the making of any Federal grant, the making of any Federal loan, the entering into of any cooperative agreement, and the extension, continuation, renewal, amendment, or modification of any Federal contract, grant, loan, or cooperative agreement.

2. If any funds other than Federal appropriated funds have been paid or will be paid to any person for influencing or attempting to influence an officer or employee of any agency, a Member of Congress, an officer or employee of Congress, or an employee of a Member of Congress in connection with this Federal contract, grant, loan, or cooperative agreement, the undersigned shall complete and submit Standard Form-LLL, "Disclosure Form to Report Lobbying," in accordance with its instructions.

3. The undersigned shall require that the language of this certification be included in the award documents for all sub-awards at all tiers (including subcontracts, sub-grants, and contracts under grants, loans, and cooperative agreements) and that all subrecipients shall certify and disclose accordingly. This certification is a material representation of fact upon which reliance was placed when this transaction was made or entered into. Submission of this certification is a prerequisite for making or entering into this transaction imposed by section 1352, title 31, U.S. Code. Any person who fails to file the required certification shall be subject to a civil penalty of not less than \$10,000 and not more than \$100,000 for each such failure.



Signature of Contractor's Authorized Official

Joseph J. Matts, President

Name and Title of Contractor's Authorized Official

10/14/2020

Date

Firms that engage in lobbying must submit Standard Form LLL in addition to this certification

ATTACHMENT F – GOVERNMENT-WIDE DEBARMENT AND SUSPENSION

2 CFR part 180
2 CFR part 1200
2 CFR § 200.213
2 CFR part 200 Appendix II (I)
Executive Order 12549
Executive Order 12689

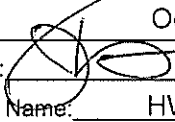
Debarment, Suspension, Ineligibility and Voluntary Exclusion

The Contractor shall comply and facilitate compliance with U.S. DOT regulations, "Non-procurement Suspension and Debarment," 2 C.F.R. part 1200, which adopts and supplements the U.S. Office of Management and Budget (U.S. OMB) "Guidelines to Agencies on Governmentwide Debarment and Suspension (Non-procurement)," 2 C.F.R. part 180. These provisions apply to each contract at any tier of \$25,000 or more, and to each contract at any tier for a federally required audit (irrespective of the contract amount), and to each contract at any tier that must be approved by an FTA official irrespective of the contract amount. As such, the Contractor shall verify that its principals, affiliates, and subcontractors are eligible to participate in this federally funded contract and are not presently declared by any Federal department or agency to be:

- a) Debarred from participation in any federally assisted Award;
- b) Suspended from participation in any federally assisted Award;
- c) Proposed for debarment from participation in any federally assisted Award;
- d) Declared ineligible to participate in any federally assisted Award;
- e) Voluntarily excluded from participation in any federally assisted Award; or
- f) Disqualified from participation in any federally assisted Award.

By signing and submitting its bid or proposal, the bidder or proposer certifies as follows:

The certification in this clause is a material representation of fact relied upon by the AGENCY. If it is later determined by the AGENCY that the bidder or proposer knowingly rendered an erroneous certification, in addition to remedies available to the AGENCY, the Federal Government may pursue available remedies, including but not limited to suspension and/or debarment. The bidder or proposer agrees to comply with the requirements of 2 C.F.R. part 180, subpart C, as supplemented by 2 C.F.R. part 1200, while this offer is valid and throughout the period of any contract that may arise from this offer. The bidder or proposer further agrees to include a provision requiring such compliance in its lower tier covered transactions.

Date: October 14, 2020
Signature: 
Company Name: HWH Architects Engineers Planners Inc.
Title: President

ATTACHMENT G - PERSONAL PROPERTY TAX AFFIDAVIT

(O.R.C. 5719.042)

The person making a proposal shall submit to the BCRTA Executive Director a statement affirmed under oath that the person with whom the contract is to be made was not charged at the time the proposal was submitted with any delinquent personal property taxes on the general tax list of personal property of any county in which the taxing district has territory or that such person was charged with delinquent personal property taxes on any such tax list, in which case the statement shall also set forth the amount of such due and unpaid delinquent taxes and any due and unpaid penalties and interest thereon. If the statement indicates that the taxpayer was charged with any such taxes, a copy of the statement shall be transmitted by the Manager of Administration to the county treasurer within thirty (30) days of the date it is submitted.

STATE OF Ohio
COUNTY OF Cuyahoga

The undersigned being first duly sworn states that he/she is (check one):

- the proposer OR the duly-authorized representative of the proposer

to whom a contract pursuant to Invitation for Proposal No. 2020-015 for LEGAL SERVICES was awarded; and further states that, at the time the proposers' proposal was submitted (check and complete as required):

proposer was not charged with any delinquent personal property taxes on the general tax list of personal property of Cuyahoga, Ohio
(County, State)

proposer was charged with delinquent personal property taxes on the general tax list of personal property of as follows: _____
(County, State)

\$ _____ in due and unpaid delinquent taxes

\$ _____ in due and unpaid penalties and interest thereon

Name of Proposer: Joseph J. Matts
Authorized Signature: [Signature]
Title: President
Company: HWH Architects Engineers Planners Inc.
Address: 600 Superior Avenue, East, Suite 1100
City, State, Zip: Cleveland, Ohio 44114

Sworn to before me and subscribed in my presence this 14th day of
October 2020.



LEONTYNE WALTON
NOTARY PUBLIC
STATE OF OHIO
Recorded in
Cuyahoga County
My Comm. Exp. 5/1/2023

#2020-014 Architecture and Engineering Services for the Cleveland Street
Multimodal Shared Services Facility & City of Oxford Passenger Rail Platform

ATTACHMENT J - DISADVANTAGED BUSINESS ENTERPRISE (DBE) GOOD FAITH EFFORTS

PART 1: GUIDELINES

On DOT-assisted projects that have an established DBE Contract Goal or establish a DBE Participation expectation (no specific contract goal), the Prime Contractor must make sufficient Good Faith Efforts ("GFEs") to meet the goal or expectation. The Prime Contractor can meet this requirement in either one or two ways. First, the Prime Contractor can meet the requirement with sufficient DBE participation. Second, the Prime Contractor can document adequate GFEs to meet the DBE requirement on the project. Both ways require review and approval. CFR Title 49, Part 26, Appendix A, states that determination concerning the sufficiency of the Prime Contractor's GFEs is a judgement call and using quantitative formulas is not permitted to make the determination.

Demonstration of GFEs

A Prime Contractor must show that it took all necessary and reasonable steps to achieve a DBE goal which could reasonably be expected to obtain sufficient DBE participation, even if it was not successful. The documentation should reflect that the Prime Contractor was actively and aggressively trying to obtain DBE participation sufficient to meet the DBE contract goal. Mere pro forma efforts are not an acceptable demonstration of a Prime Contractor's GFEs in meeting the DBE requirements.

A Prime Contractor selecting portions of work to be performed by DBEs will increase the likelihood that the DBE requirements will be achieved. This includes, where appropriate, breaking out contract work items into economically feasible units (i.e. smaller tasks or quantities) to facilitate DBE participation, even when the Prime Contractor might otherwise prefer to perform these work items with its own forces.

Documentation of GFEs

Evidence of GFEs should include, but are not limited to, a list of names, a number of contact attempts, how firms were contacted (i.e. copies of e-mail, letters, etc.), addresses, and telephone numbers of DBEs that were considered; a description of the information provided regarding the plans and specifications for the work selected for subcontracting; and evidence as to why agreements could not be reached for DBEs to perform the work. Please note that documentation provided may be subject to audit.

Additional Considerations

The fact that there may be some additional costs involved in finding and using DBEs is not in itself sufficient reason for a Prime Contractor's failure to meet the contract DBE requirement, as long as such costs are reasonable.

The ability or desire of a Prime Contractor to perform the work of a contract with its own organization does not relieve the Prime Contractor of the responsibility to make GFEs.

Prime Contractors are not required to accept higher quotes from DBEs if the price difference is excessive or unreasonable. It should be noted that excessive or unreasonable will be evaluated on a case by case basis while reviewing the Prime Contractor's total GFEs submittal.

In the event of a substitution or a replacement of a DBE on a project, a Prime Contractor's inability to find a replacement DBE at the original price is not alone sufficient to demonstrate GFEs.

Prime Contractors should select DBE firms that have been DBE certified with the proper NAICS codes for the work the DBE will be performing. Conversely, DBE firms should not commit to work that they do not have the proper NAICS codes to perform.

PART 2: DBE UNAVAILABILITY CERTIFICATION

HWH will meet or exceed DBE Goals

October 15, 2020

(Affiant)

(Date)

of HWH Architect Engineers Planners Inc.

(Prime or General Bidder)

certify that prior to the bid opening date, I contacted the following DBE contractors to obtain a bid/proposal for services/supplies necessary to be performed on RFP-2020-014.

Disadvantaged Service/Supplies

Date	Contractor (Must be DBE)	Item(s) Sought (i.e., Unit Price, Material & Labor, Labor Only, etc.)

Attach a detailed narrative of efforts made to involve disadvantaged contractors, subcontractors, & suppliers as suggested in Attachment J, Part 1.

To the best of my knowledge and belief, said disadvantaged contractor(s) was unavailable (exclusive of unavailability due to lack of agreement on price) for work on this project, or unable to prepare a bid/proposal for the following reasons:

Signature:

(Prime or General Contractor)

Date:

_____ was offered an opportunity

(DBE firm)s

participate on the above identified Legal Notice on

_____ (date)

by

_____ (Source)

#2020-014 Architecture and Engineering Services for the Chestnut Street Multimodal Shared Services Facility & City of Oxford Passenger Rail Platform

ATTACHMENT K - DBE CONTRACTOR COMMITMENT

PART 1: DBE UTILIZATION

The undersigned bidder/offeror has satisfied the requirements of the bid specification in the following manner (please check the appropriate space):

The bidder/offeror is committed to a minimum of 20 % DBE utilization on this contract.

The bidder/offeror (if unable to meet the DBE goal of ____%) is committed to a minimum of ____% DBE utilization on this contract a submits documentation demonstrating good faith efforts.

Name of bidder/offeror's firm: HWH Architects Engineers Planners Inc.

State Registration No. Architecture Cert. Firm.10134800 Engineering COA.01842

By  Vice President
(Signature / Title)

PART 2: DBE PARTICIPATION CONFIRMATION

Name of bidder/offeror's firm: HWH Architects Engineers Planners Inc.

Address: 600 Superior Avenue East

City: Cleveland State: Ohio Zip: 44114

Name of DBE firm: Smith Architects

Address: 16105 Lorain Avenue

City: Cleveland State: Ohio Zip: 44111

Telephone: 216-664-1111

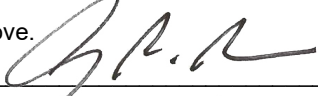
Description of work to be performed by DBE firm:

Smith Architects will provide Architectural support, design assistance, cost benefit analysis, specification writing and field observation assistance.

The bidder/offeror is committed to utilizing the above-named DBE firm for the work described above. The estimated dollar value of this work is \$12,000 Part 1

Affirmation

The above-named DBE firm affirms that it will perform the portion of the contract for the estimated dollar value as stated above.

By  Vice President

(Signature / Title)

If the bidder/offeror does not receive award of the prime contract, any and all representations in this Letter of Intent and Affirmation shall be null and void.

(Submit this page for each DBE subcontractor.)

PART 2: DBE PARTICIPATION CONFIRMATION

Name of bidder/offeror's firm: HWH Architects Engineers Planners

Address: 600 Superior Avenue East, Suite 1100

City: Cleveland State: Ohio Zip: 44114

Name of DBE firm: K&J Safety & Security

Address: 3257 Elcano Lane

City: Cantonment State: Florida Zip: 32533-0901


Telephone: 850-968-0901

Description of work to be performed by DBE firm: K&J will provide safety and security peer reviews and overall transit value engineering.

The bidder/offeror is committed to utilizing the above-named DBE firm for the work described above. The estimated dollar value of this work is \$ 2,000 Part 1

Affirmation

The above-named DBE firm affirms that it will perform the portion of the contract for the estimated dollar value as stated above.

By  Vice President
(Signature / Title)

If the bidder/offeror does not receive award of the prime contract, any and all representations in this Letter of Intent and Affirmation shall be null and void.

(Submit this page for each DBE subcontractor.)

#2020-014 Architecture and Engineering Services for the Chestnut Street Multimodal Shared Services Facility & City of Oxford Passenger Rail Platform

PART 2: DBE PARTICIPATION CONFIRMATION

Name of bidder/offeror's firm: HWH Architects Engineers Planners

Address: 600 Superior Avenue East, Suite 1100

City: Cleveland State: Ohio Zip: 44114

Name of DBE firm: Resource International Inc. (RII)

Address: 6350 Presidential Parkway

City: Columbus State: Ohio Zip: 43231

Telephone: 614-823-4949

Description of work to be performed by DBE firm: RII will perform cost estimating, civil engineering support and some construction services as a DBE consultant.

The bidder/offeror is committed to utilizing the above-named DBE firm for the work described above. The estimated dollar value of this work is **\$2,000 Part 1**

Affirmation

The above-named DBE firm affirms that it will perform the portion of the contract for the estimated dollar value as stated above.

 Vice President
(Signature / Title)

If the bidder/offeror does not receive award of the prime contract, any and all representations in this Letter of Intent and Affirmation shall be null and void.

(Submit this page for each DBE subcontractor.)

RII will perform other non DBE services also

ATTACHMENT L - EVIDENCE OF DBE CERTIFICATION

AFFIDAVIT OF DISADVANTAGED BUSINESS ENTERPRISE

State of OHIO

County of CUYAHOGA

I hereby declare and affirm that I am the PRESIDENT

and duly authorized representative of SMITH ARCHITECTS LLC

whose address is 16105 LORAIN AVE., CLEVELAND, OH, 44111

I hereby declare and affirm that I am a disadvantaged business enterprise and can be found listed in the Ohio Unified Certification Program (UCP) as AWP Vendor ID: D22475105

I DO SOLEMNLY DECLARE AND AFFIRM UNDER THE PENALTIES OF PERJURY THAT THE CONTENTS OF THE FOREGOING DOCUMENT ARE TRUE AND CORRECT, AND THAT I AM AUTHORIZED, ON BEHALF OF THE ABOVE FIRM, TO MAKE THIS AFFIDAVIT.

By: Bonnie Smith
(Affiant)

10/14/2020
(Date)

On this 14 day of October, 20 20, before me,
Bonnie Smith, known to me to be the person described in the

foregoing affidavit acknowledged that he/she executed the same in the capacity therein stated and for the purpose therein contained.

IN WITNESS WHEREOF, I hereunto set my hand and official seal.

E. Callahan
(Notary Public)

My Commission Expires: _____ (SEAL)



EBONY C CALLAHAN
Notary Public, State of Ohio
My Comm. Expires August 16, 2022

#2020-014 Architecture and Engineering Services for the Chestnut Street Multimodal Shared Services Facility & City of Oxford Passenger Rail Platform

ATTACHMENT L - EVIDENCE OF DBE CERTIFICATION

AFFIDAVIT OF DISADVANTAGED BUSINESS ENTERPRISE

State of Florida

County of Escambia

I hereby declare and affirm that I am the Chief Executive Officer
(Title)

and duly authorized representative of K&J Safety and Security Consulting Services, Inc.
(Name of Company)

whose address is 3257 Elcano Lane, Cantonment, FL 32533-6876

I hereby declare and affirm that I am a disadvantaged business enterprise and can be found listed in the Ohio Unified Certification Program (UCP) as AWP Vendor ID: Ohio DBE Certificate #11883

I DO SOLEMNLY DECLARE AND AFFIRM UNDER THE PENALTIES OF PERJURY THAT THE CONTENTS OF THE FOREGOING DOCUMENT ARE TRUE AND CORRECT, AND THAT I AM AUTHORIZED, ON BEHALF OF THE ABOVE FIRM, TO MAKE THIS AFFIDAVIT.

By: *Karen L. Tucci* 10/14/2020
(Affiant) *(Date)*

On this 14th day of October, 2020, before me,

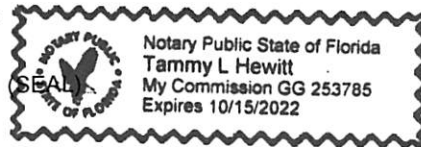
Karen L. Tucci, known to me to be the person described in the

foregoing affidavit acknowledged that he/she executed the same in the capacity therein stated and for the purpose therein contained.

IN WITNESS WHEREOF, I hereunto set my hand and official seal.

Tammy L. Hewitt
(Notary Public)

My Commission Expires: 10/15/2022



#2020-014 Architecture and Engineering Services for the Chestnut Street Multimodal Shared Services Facility & City of Oxford Passenger Rail Platform

ATTACHMENT L - EVIDENCE OF DBE CERTIFICATION

AFFIDAVIT OF DISADVANTAGED BUSINESS ENTERPRISE

State of Ohio

County of Franklin

I hereby declare and affirm that I am the Executive Vice President
(Title)

and duly authorized representative of Resource International, Inc.
(Name of Company)

whose address is 4480 Lake Forest Dr. Ste. 38, Cincinnati, OH 45242

I hereby declare and affirm that I am a disadvantaged business enterprise and can be found listed in the Ohio Unified Certification Program (UCP) as AWP Vendor ID: 061805004

I DO SOLEMNLY DECLARE AND AFFIRM UNDER THE PENALTIES OF PERJURY THAT THE CONTENTS OF THE FOREGOING DOCUMENT ARE TRUE AND CORRECT, AND THAT I AM AUTHORIZED, ON BEHALF OF THE ABOVE FIRM, TO MAKE THIS AFFIDAVIT.

By: *Marcia Lampman* 10/14/2020
(Affiant) *(Date)*

On this 14 day of October, 2020, before me,

Marcia Lampman, known to me to be the person described in the

foregoing affidavit acknowledged that he/she executed the same in the capacity therein stated and for the purpose therein contained.

IN WITNESS WHEREOF, I hereunto set my hand and official seal.

Kristen J Hosni
(Notary Public)

My Commission Expires: 9-29-25 (SEAL)



Kristen J Hosni
Notary Public, State of Ohio
My Commission Expires 09-29-25

#2020-014 Architecture and Engineering Services for the Chestnut Street Multimodal Shared Services Facility & City of Oxford Passenger Rail Platform



Bureau of Workers' Compensation

30 W. Spring St.
Columbus, OH 43215

Certificate of Ohio Workers' Compensation

This certifies that the employer listed below participates in the Ohio State Insurance Fund as required by law. Therefore, the employer is entitled to the rights and benefits of the fund for the period specified. This certificate is only valid if premiums and assessments, including installments, are paid by the applicable due date. To verify coverage, visit www.bwc.ohio.gov, or call 1-800-644-6292.

This certificate must be conspicuously posted.

Policy number and employer
00955354

Period Specified Below
07/01/2020 to 07/01/2021

HWH ARCHITECTS ENGINEERS PLANNERS INC
600 SUPERIOR AVE E STE 1100
CLEVELAND, OH 44114-2623



www.bwc.ohio.gov
Issued by: BWC

Administrator/CEO

You can reproduce this certificate as needed.

Ohio Bureau of Workers' Compensation

Required Posting

Section 4123.54 of the Ohio Revised Code requires notice of rebuttable presumption. Rebuttable presumption means an employee may dispute or prove untrue the presumption (or belief) that alcohol, marihuana or a controlled substance not prescribed by the employee's physician is the proximate cause (main reason) of the work-related injury.

The burden of proof is on the employee to prove the presence of alcohol, marihuana or a controlled substance was not the proximate cause of the work-related injury. An employee who tests positive or refuses to submit to chemical testing may be disqualified for compensation and benefits under the Workers' Compensation Act.



Bureau of Workers' Compensation

You must post this language with the Certificate of Ohio Workers' Compensation.



CERTIFICATE OF LIABILITY INSURANCE

DATE (MM/DD/YYYY)

8/21/2020

THIS CERTIFICATE IS ISSUED AS A MATTER OF INFORMATION ONLY AND CONFERS NO RIGHTS UPON THE CERTIFICATE HOLDER. THIS CERTIFICATE DOES NOT AFFIRMATIVELY OR NEGATIVELY AMEND, EXTEND OR ALTER THE COVERAGE AFFORDED BY THE POLICIES BELOW. THIS CERTIFICATE OF INSURANCE DOES NOT CONSTITUTE A CONTRACT BETWEEN THE ISSUING INSURER(S), AUTHORIZED REPRESENTATIVE OR PRODUCER, AND THE CERTIFICATE HOLDER.

IMPORTANT: If the certificate holder is an **ADDITIONAL INSURED**, the policy(ies) must have **ADDITIONAL INSURED** provisions or be endorsed. If **SUBROGATION IS WAIVED**, subject to the terms and conditions of the policy, certain policies may require an endorsement. A statement on this certificate does not confer rights to the certificate holder in lieu of such endorsement(s).


PRODUCER The James B. Oswald Company 1100 Superior Avenue, Suite 1500 Cleveland OH 44114		CONTACT NAME: Noelle Boyd PHONE (A/C, No, Ext): 216-367-4954 E-MAIL ADDRESS: nmboyd@oswaldcompanies.com FAX (A/C, No): 216-839-2815	
		INSURER(S) AFFORDING COVERAGE	
		INSURER A : Travelers Indemnity Company	NAIC # 25658
		INSURER B : Phoenix Insurance Company	25623
		INSURER C : Travelers Property Casualty Company Of America	25674
		INSURER D : Liberty Mutual Ins Co	23043
		INSURER E :	
		INSURER F :	

COVERAGES **CERTIFICATE NUMBER:** 909290785 **REVISION NUMBER:**

THIS IS TO CERTIFY THAT THE POLICIES OF INSURANCE LISTED BELOW HAVE BEEN ISSUED TO THE INSURED NAMED ABOVE FOR THE POLICY PERIOD INDICATED. NOTWITHSTANDING ANY REQUIREMENT, TERM OR CONDITION OF ANY CONTRACT OR OTHER DOCUMENT WITH RESPECT TO WHICH THIS CERTIFICATE MAY BE ISSUED OR MAY PERTAIN, THE INSURANCE AFFORDED BY THE POLICIES DESCRIBED HEREIN IS SUBJECT TO ALL THE TERMS, EXCLUSIONS AND CONDITIONS OF SUCH POLICIES. LIMITS SHOWN MAY HAVE BEEN REDUCED BY PAID CLAIMS.

INSR LTR	TYPE OF INSURANCE	ADDL INSD	SUBR WVD	POLICY NUMBER	POLICY EFF (MM/DD/YYYY)	POLICY EXP (MM/DD/YYYY)	LIMITS
A	<input checked="" type="checkbox"/> COMMERCIAL GENERAL LIABILITY <input type="checkbox"/> CLAIMS-MADE <input checked="" type="checkbox"/> OCCUR <input checked="" type="checkbox"/> Al Primary & <input checked="" type="checkbox"/> Non-Contributory GEN'L AGGREGATE LIMIT APPLIES PER: <input type="checkbox"/> POLICY <input checked="" type="checkbox"/> PRO-JECT <input checked="" type="checkbox"/> LOC <input type="checkbox"/> OTHER:	Y	Y	680-2J51935A-20-47	7/1/2020	7/1/2021	EACH OCCURRENCE \$2,000,000 DAMAGE TO RENTED PREMISES (Ea occurrence) \$1,000,000 MED EXP (Any one person) \$5,000 PERSONAL & ADV INJURY \$2,000,000 GENERAL AGGREGATE \$4,000,000 PRODUCTS - COMP/OP AGG \$4,000,000 \$
B	<input type="checkbox"/> ANY AUTO <input type="checkbox"/> OWNED AUTOS ONLY <input type="checkbox"/> SCHEDULED AUTOS <input checked="" type="checkbox"/> HIRED AUTOS ONLY <input checked="" type="checkbox"/> NON-OWNED AUTOS ONLY <input checked="" type="checkbox"/> Al-Primary	Y	Y	BA-2570L273-20-GRP	7/1/2020	7/1/2021	COMBINED SINGLE LIMIT (Ea accident) \$1,000,000 BODILY INJURY (Per person) \$ BODILY INJURY (Per accident) \$ PROPERTY DAMAGE (Per accident) \$ \$
C	<input checked="" type="checkbox"/> UMBRELLA LIAB <input checked="" type="checkbox"/> OCCUR <input type="checkbox"/> EXCESS LIAB <input type="checkbox"/> CLAIMS-MADE <input type="checkbox"/> DED <input checked="" type="checkbox"/> RETENTION \$ 10,000	Y	Y	CUP-6665Y746-20-47	7/1/2020	7/1/2021	EACH OCCURRENCE \$6,000,000 AGGREGATE \$6,000,000 Excludes Professional \$
B	WORKERS COMPENSATION AND EMPLOYERS' LIABILITY ANY PROPRIETOR/PARTNER/EXECUTIVE OFFICER/MEMBER EXCLUDED? <input type="checkbox"/> Y <input checked="" type="checkbox"/> N (Mandatory in NH) If yes, describe under DESCRIPTION OF OPERATIONS below		Y	UB-7K018598-20-47-G	7/1/2020	7/1/2021	<input checked="" type="checkbox"/> PER STATUTE <input checked="" type="checkbox"/> OTHER Ohio Stop Gap E.L. EACH ACCIDENT \$1,000,000 E.L. DISEASE - EA EMPLOYEE \$1,000,000 E.L. DISEASE - POLICY LIMIT \$1,000,000
D	Professional Liability Claims Made Retro Date:01/01/1908	N	Y	AEX196917-0120	7/1/2020	7/1/2021	Each claim \$2,000,000 Aggregate \$5,000,000

DESCRIPTION OF OPERATIONS / LOCATIONS / VEHICLES (ACORD 101, Additional Remarks Schedule, may be attached if more space is required)
 Additional Insured and Waiver of Subrogation as designated above is provided when required of the Named Insured by written contract or agreement.
 Project: 18.51; On Call A/E Services
 GL and Auto limits, when combined with Umbrella Liability limits meet the required limits.
 Definition of Insured Contract as defined in CG T1 00 02 19 page 18 of 21, is amended to provide Railroad Easement Coverage per form CG D379 (01/16), page 6 of 6; attached.
 Greater Cleveland Regional Transit Authority is an Additional Insured on a primary and noncontributory basis as noted above.

CERTIFICATE HOLDER <p style="color: red; text-align: center;">This will need to have BCRTA and Oxford listed as Certificate Holders if HWH is Awarded Contract</p> Greater Cleveland Regional Transit Authority 1240 West Sixth Cleveland OH 44113	CANCELLATION SHOULD ANY OF THE ABOVE DESCRIBED POLICIES BE CANCELLED BEFORE THE EXPIRATION DATE THEREOF, NOTICE WILL BE DELIVERED IN ACCORDANCE WITH THE POLICY PROVISIONS. AUTHORIZED REPRESENTATIVE 
---	--

© 1988-2015 ACORD CORPORATION. All rights reserved.

COMMERCIAL GENERAL LIABILITY

- 10.** "Good Samaritan services" means any emergency medical services for which no compensation is demanded or received.
- 11.** "Hostile fire" means a fire which becomes uncontrollable or breaks out from where it was intended to be.
- 12.** "Impaired property" means tangible property, other than "your product" or "your work", that cannot be used or is less useful because:
- It incorporates "your product" or "your work" that is known or thought to be defective, deficient, inadequate or dangerous; or
 - You have failed to fulfill the terms of a contract or agreement;
- if such property can be restored to use by the repair, replacement, adjustment or removal of "your product" or "your work" or your fulfilling the terms of the contract or agreement.
- 13.** "Insured contract" means:
- A contract for a lease of premises. However, that portion of the contract for a lease of premises that indemnifies any person or organization for "premises damage" is not an "insured contract";
 - A sidetrack agreement;
 - Any easement or license agreement, except in connection with construction or demolition operations on or within 50 feet of a railroad;
 - An obligation, as required by ordinance, to indemnify a municipality, except in connection with work for a municipality;
 - An elevator maintenance agreement;
 - That part of any other contract or agreement pertaining to your business (including an indemnification of a municipality in connection with work performed for a municipality) under which you assume the tort liability of another party to pay for "bodily injury", "property damage" or "personal injury" to a third person or organization. Tort liability means a liability that would be imposed by law in the absence of any contract or agreement.
- Paragraph **f.** does not include that part of any contract or agreement:
- That indemnifies a railroad for "bodily injury" or "property damage" arising out of construction or demolition operations, within 50 feet of any railroad property and affecting any railroad bridge or trestle, tracks, roadbeds, tunnel, underpass or crossing;
- That indemnifies an architect, engineer or surveyor for injury or damage arising out of:
 - Preparing, approving, or failing to prepare or approve, maps, shop drawings, opinions, reports, surveys, field orders, change orders or drawings and specifications; or
 - Giving directions or instructions, or failing to give them, if that is the primary cause of the injury or damage; or
 - Under which the insured, if an architect, engineer or surveyor, assumes liability for an injury or damage arising out of the insured's rendering or failure to render professional services, including those listed in Paragraph **(2)** above and supervisory, inspection, architectural or engineering activities.
- 14.** "Leased worker" means a person leased to you by a labor leasing firm under an agreement between you and the labor leasing firm, to perform duties related to the conduct of your business. "Leased worker" does not include a "temporary worker".
- 15.** "Loading or unloading" means the handling of property:
- After it is moved from the place where it is accepted for movement into or onto an aircraft, watercraft or "auto";
 - While it is in or on an aircraft, watercraft or "auto"; or
 - While it is being moved from an aircraft, watercraft or "auto" to the place where it is finally delivered;
- but "loading or unloading" does not include the movement of property by means of a mechanical device, other than a hand truck, that is not attached to the aircraft, watercraft or "auto".
- 16.** "Mobile equipment" means any of the following types of land vehicles, including any attached machinery or equipment:
- Bulldozers, farm machinery, forklifts and other vehicles designed for use principally off public roads;
 - Vehicles maintained for use solely on or next to premises you own or rent;
 - Vehicles that travel on crawler treads;

THIS ENDORSEMENT CHANGES THE POLICY. PLEASE READ IT CAREFULLY.

XTEND ENDORSEMENT FOR ARCHITECTS, ENGINEERS AND SURVEYORS

This endorsement modifies insurance provided under the following:
 COMMERCIAL GENERAL LIABILITY COVERAGE PART

GENERAL DESCRIPTION OF COVERAGE – This endorsement broadens coverage. However, coverage for any injury, damage or medical expenses described in any of the provisions of this endorsement may be excluded or limited by another endorsement to this Coverage Part, and these coverage broadening provisions do not apply to the extent that coverage is excluded or limited by such an endorsement. The following listing is a general coverage description only. Read all the provisions of this endorsement and the rest of your policy carefully to determine rights, duties, and what is and is not covered.

- A. Non-Owned Watercraft – 75 Feet Long Or Less
- B. Who Is An Insured – Unnamed Subsidiaries
- C. Who Is An Insured – Retired Partners, Members, Directors And Employees
- D. Who Is An Insured – Employees And Volunteer Workers – Bodily Injury To Co-Employees, Co-Volunteer Workers And Retired Partners, Members, Directors And Employees
- E. Who Is An Insured – Newly Acquired Or Formed Limited Liability Companies
- F. Blanket Additional Insured – Controlling Interest
- G. Blanket Additional Insured – Mortgagees, Assignees, Successors Or Receivers
- H. Blanket Additional Insured – Governmental Entities – Permits Or Authorizations Relating To Premises
- I. Blanket Additional Insured – Governmental Entities – Permits Or Authorizations Relating To Operations
- J. Incidental Medical Malpractice
- K. Medical Payments – Increased Limit
- L. Amendment Of Excess Insurance Condition – Professional Liability
- M. Blanket Waiver Of Subrogation – When Required By Written Contract Or Agreement
- N. **Contractual Liability – Railroads**

PROVISIONS

A. NON-OWNED WATERCRAFT – 75 FEET LONG OR LESS

1. The following replaces Paragraph (2) of Exclusion g., **Aircraft, Auto Or Watercraft**, in Paragraph 2. of **SECTION I – COVERAGES – COVERAGE A – BODILY INJURY AND PROPERTY DAMAGE LIABILITY**:
 - (2) A watercraft you do not own that is:
 - (a) 75 feet long or less; and
 - (b) Not being used to carry any person or property for a charge;
2. The following replaces Paragraph 2.e. of **SECTION II – WHO IS AN INSURED**:
 - e. Any person or organization that, with your express or implied consent, either

uses or is responsible for the use of a watercraft that you do not own that is:

- (1) 75 feet long or less; and
- (2) Not being used to carry any person or property for a charge;

B. WHO IS AN INSURED – UNNAMED SUBSIDIARIES

The following is added to **SECTION II – WHO IS AN INSURED**:

Any of your subsidiaries, other than a partnership or joint venture, that is not shown as a Named Insured in the Declarations is a Named Insured if:

- a. You are the sole owner of, or maintain an ownership interest of more than 50% in, such subsidiary on the first day of the policy period; and

N. CONTRACTUAL LIABILITY – RAILROADS

1. The following replaces Paragraph **c.** of the definition of "insured contract" in the **DEFINITIONS** Section:
 - c. Any easement or license agreement;
2. Paragraph **f.(1)** of the definition of "insured contract" in the **DEFINITIONS** Section is deleted.

Section 8
Pricing Proposal

See Sealed Envelope Attached